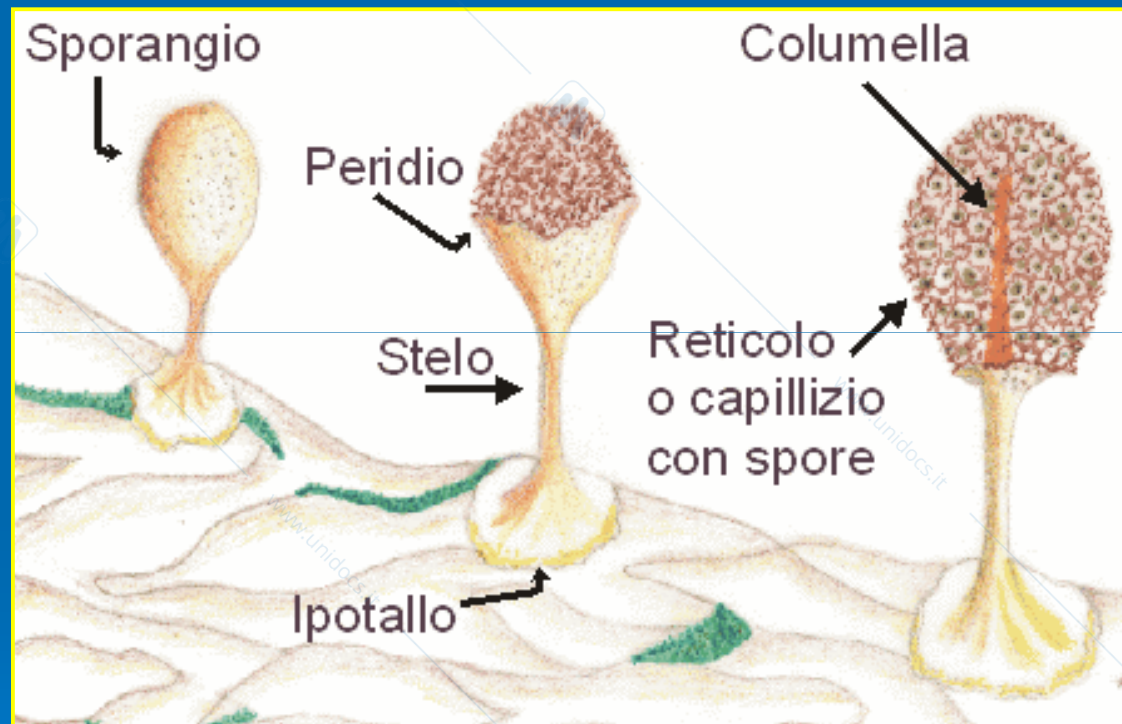


# FUNGHI UNICELLULARI

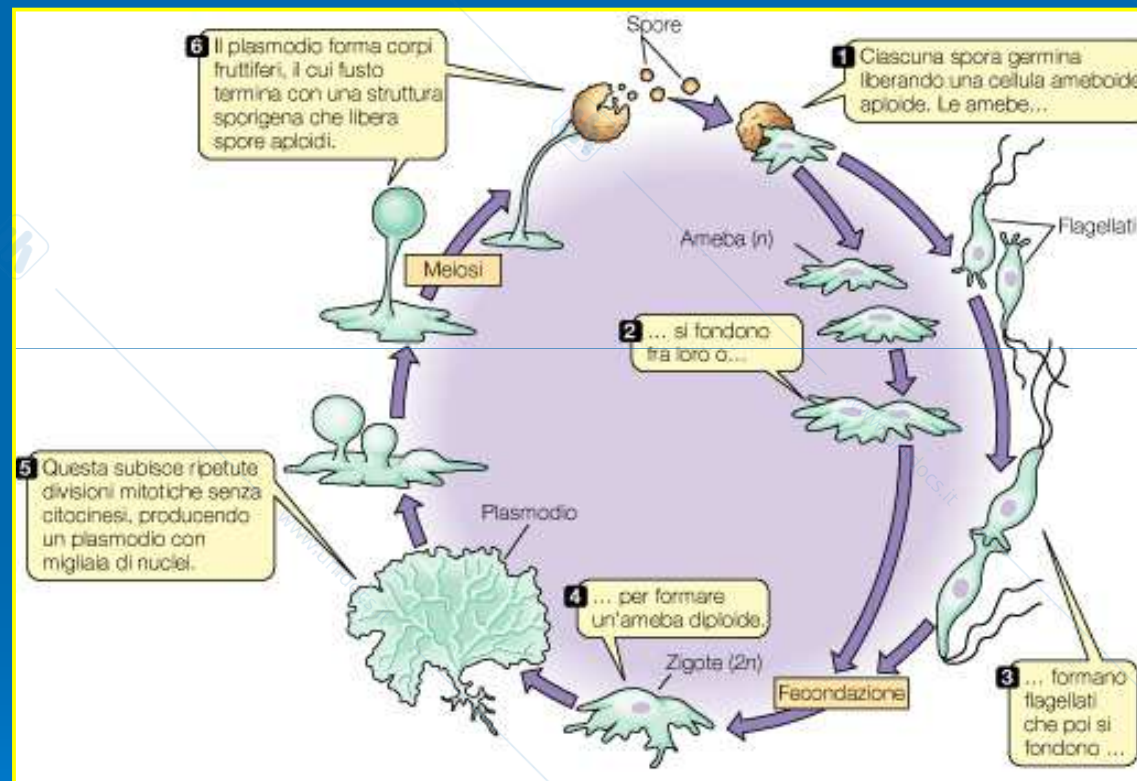
- **MIXOMICETI, o muffe mucillaginose.**
- **OOMICETI, o muffe d'acqua.**

# MIXOMICETI, o muffe mucillaginose

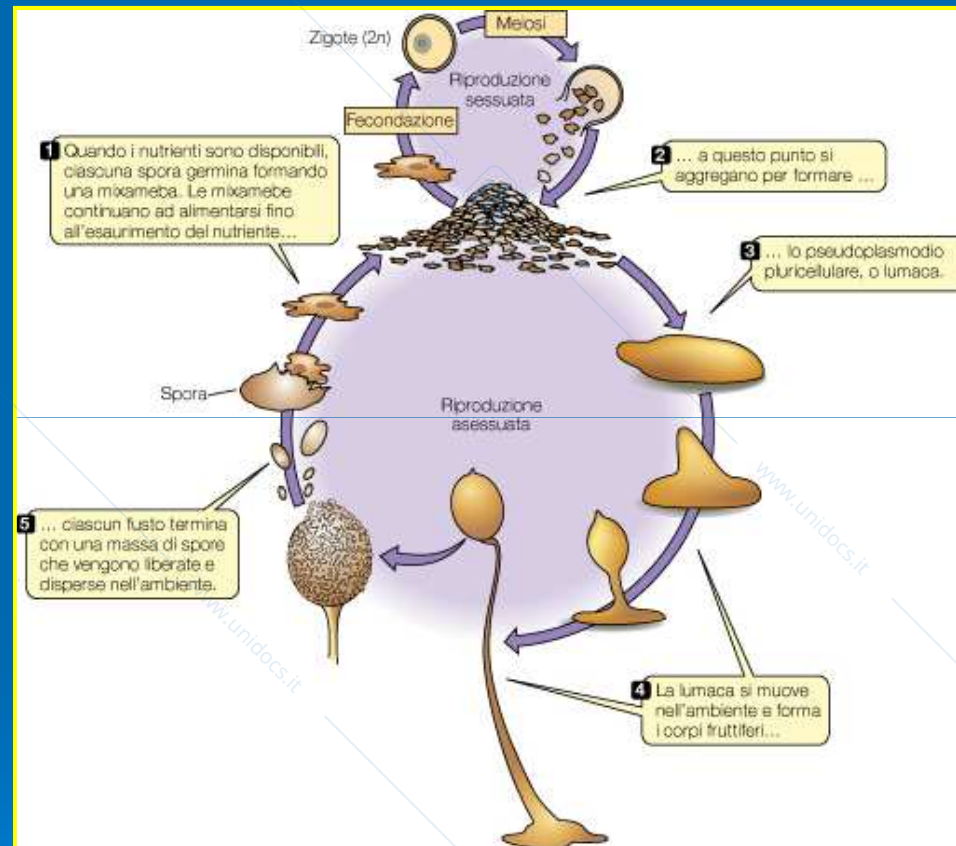


**Elementi fondamentali di uno sporangio**

# MIXOMICETI, o muffe mucillaginose

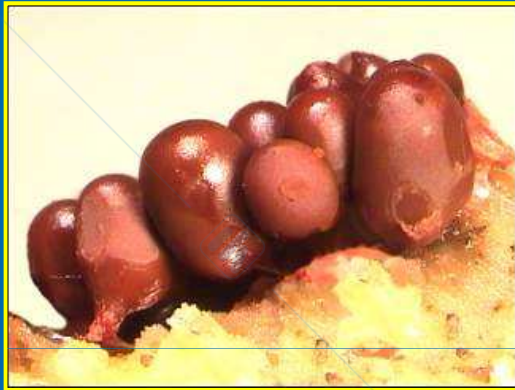


# MIXOMICETI, o muffe mucillaginose



## Ciclo vitale di *Dictyostelium discoideum*

# MIXOMICETI, o muffe mucillaginose



*Arcyria helvetica*

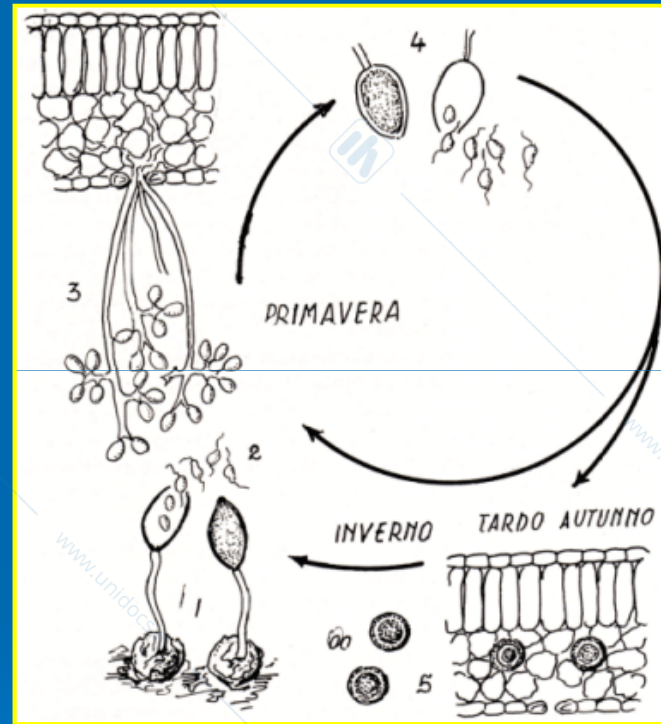


*Comatricha fusiformis*



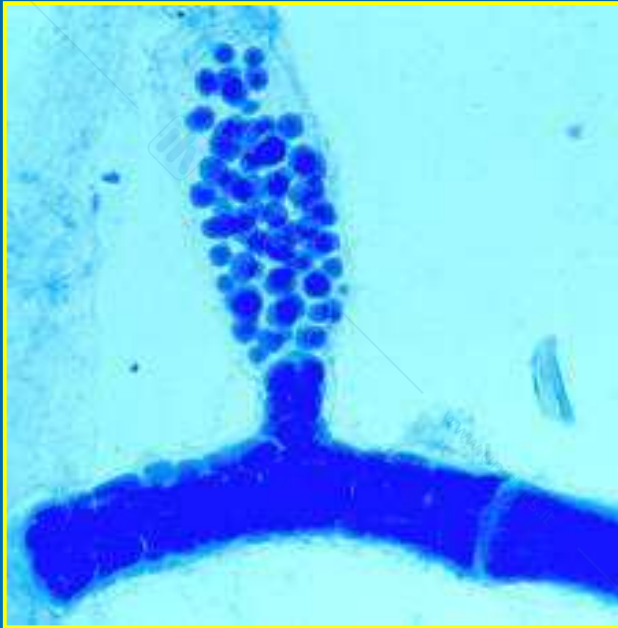
*Lycogala epidendrum*

# OOMICETI, o muffe d'acqua



**Ciclo biologico della peronospora della vite, o *Plasmopara viticola*.**

# OOMICETI, o muffe d'acqua



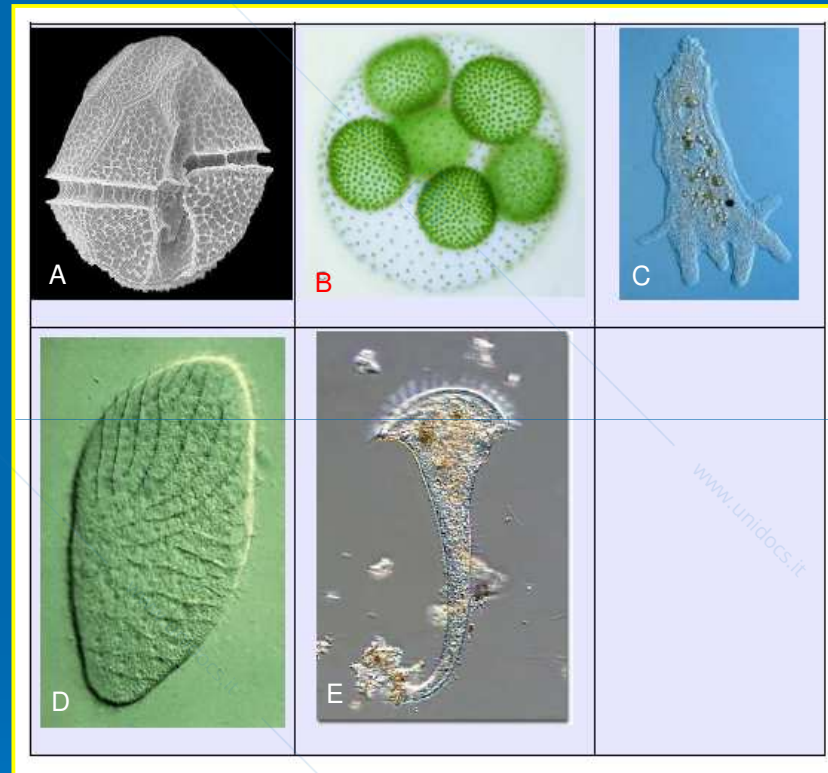
**Saprolegniales — zoosporangio**



**Peronosporales – Muffa lanuginosa di acino provocata da *Plasmopara viticola***

# PROTOZOI

# PROTOZOI

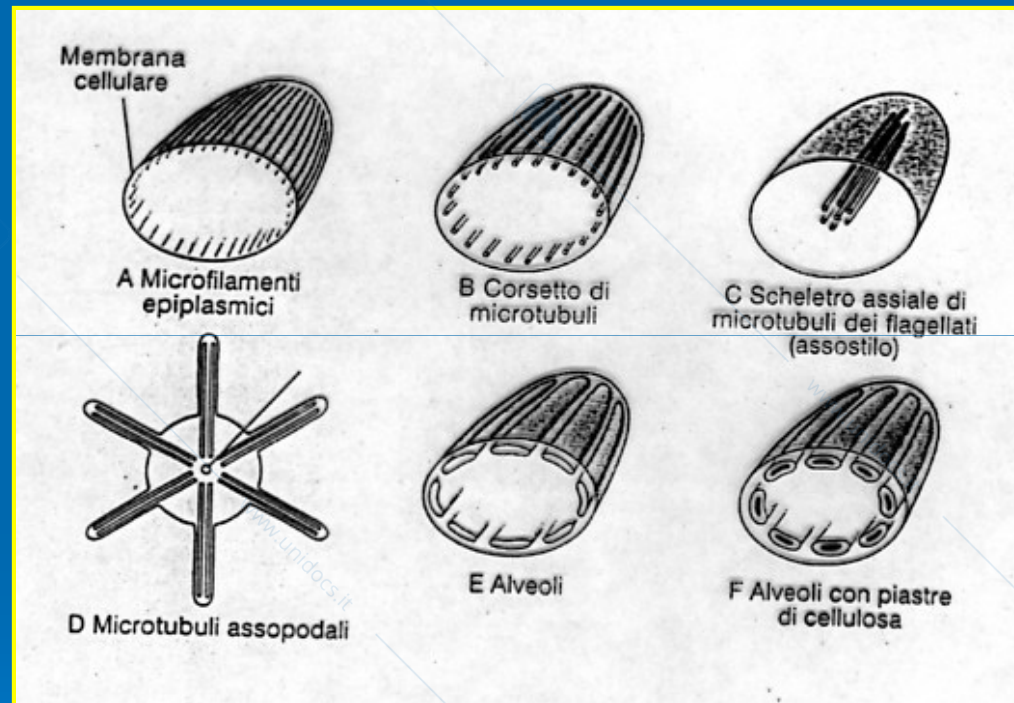


- A:** *Peridinium*
- B:** *Volvox*
- C:** *Ameba*
- D:** *Opalina*
- E:** *Stentor*

# STRUTTURE DI SOSTEGNO INTRACITOPLASMATICHE

- Endoscheletro microfilamentoso.
- Endoscheletro microtubulare.
- Endoscheletro alveolare.

# STRUTTURE DI SOSTEGNO INTRACITOPLASMATICHE



## Tipi di endoscheletro nei protozoi

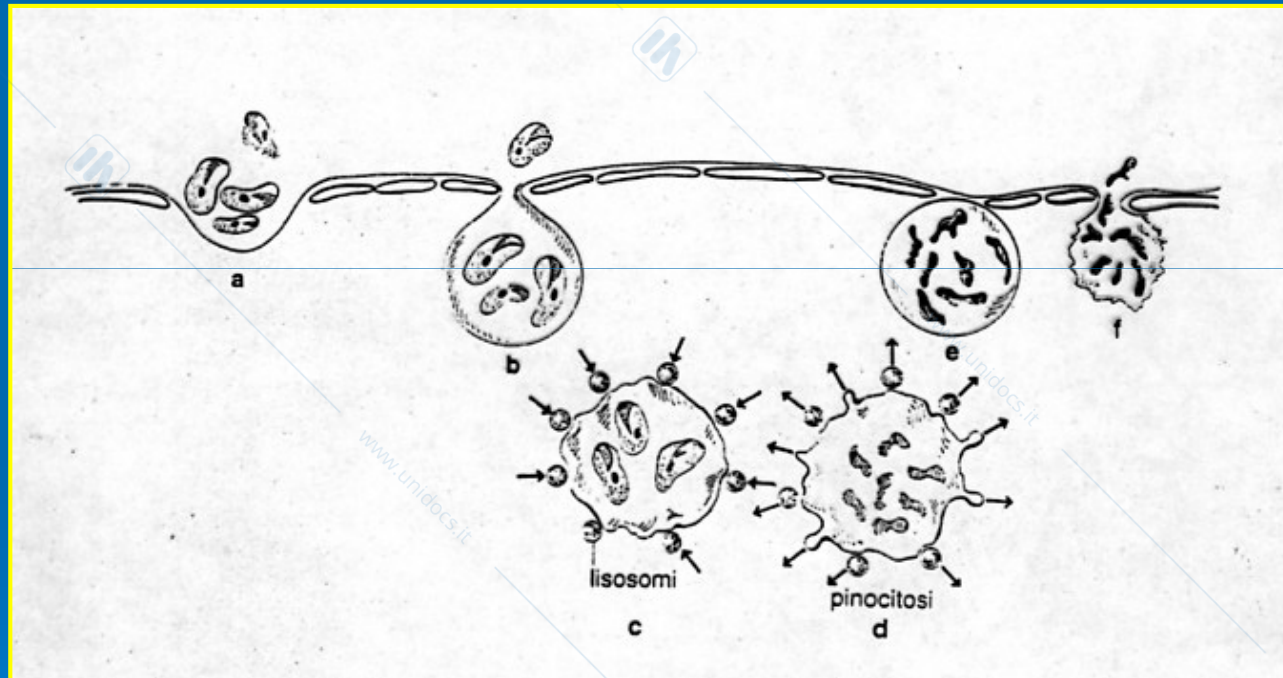
# ORGANULI CITOPLASMATICI

- **Reticolo endoplasmatico.**
- **Dittiosomi (o corpi di Golgi).**
- **Mitocondri.**
- **Plastidi.**
- **Nucleo.**

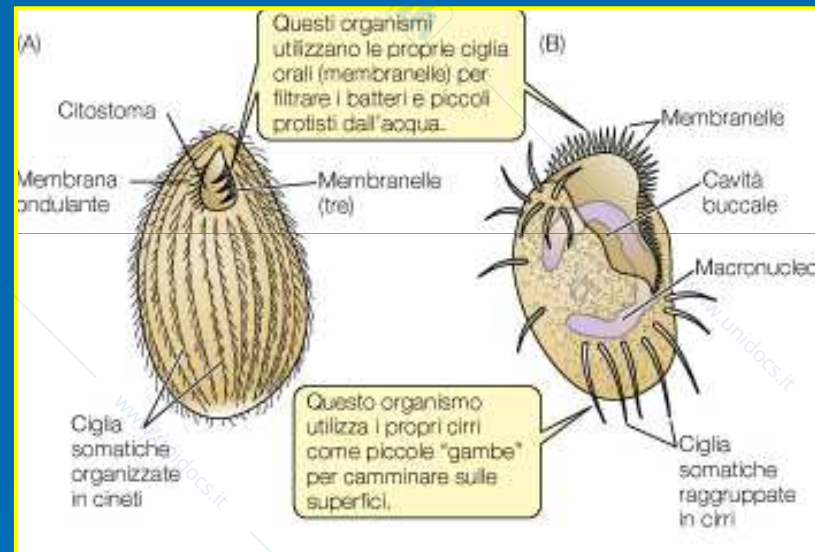
# NUTRIZIONE

- **Nutrizione saprozoica.**
- **Nutrizione olozoica.**

# LA FAGOCITOSI



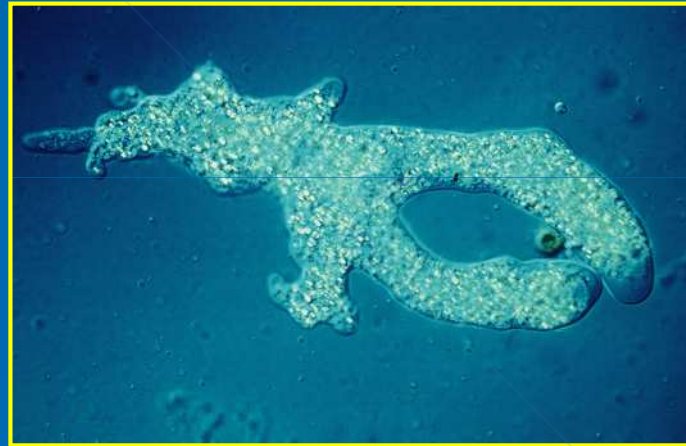
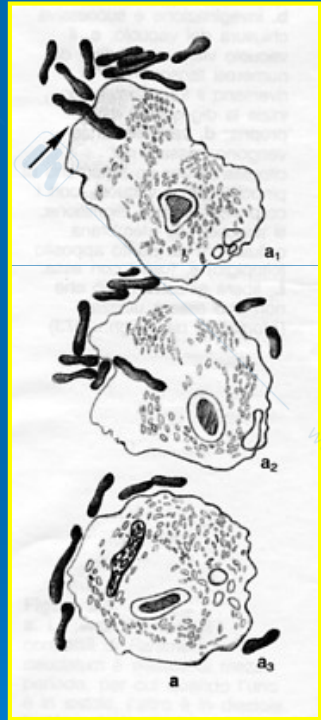
# LA FAGOCITOSI



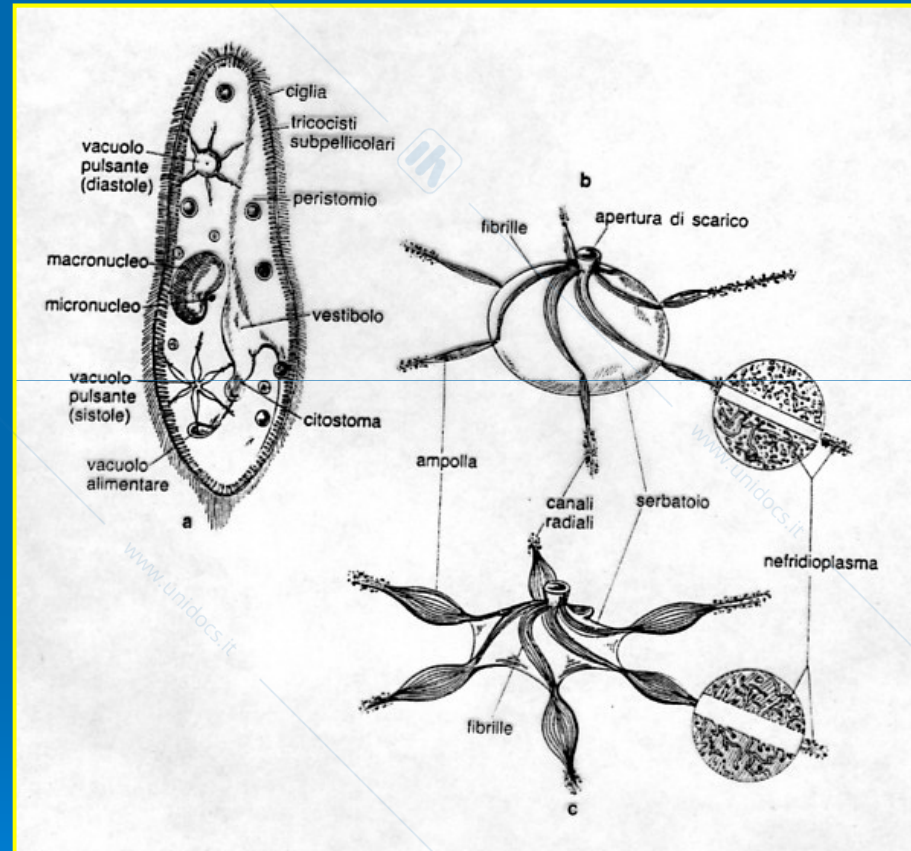
**A:** *Tetrahymena*.

**B:** *Euplotes*.

# LA FAGOCITOSI



# COMPLESSO VACUOLARE CONTRATTILE



# MOVIMENTO

- **All'interno della cellula (ciclosi).**
- **All'esterno della cellula (locomozione).**