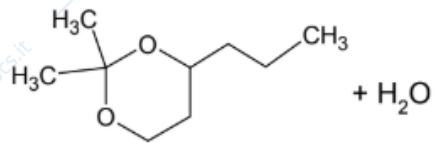


1,4-butandiolo  
H<sup>+</sup> cat

**B**

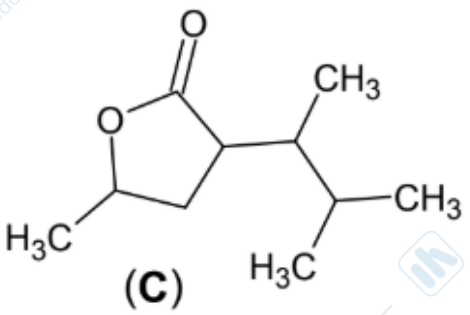
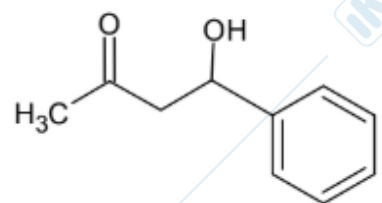
acetone + (G)

H<sup>+</sup> cat  
riscaldamento



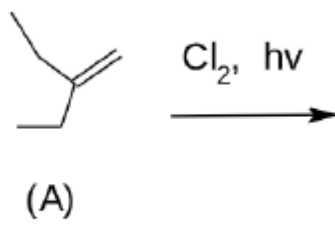
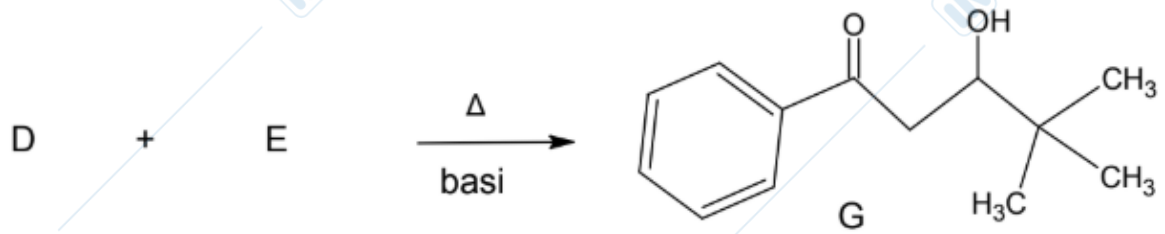
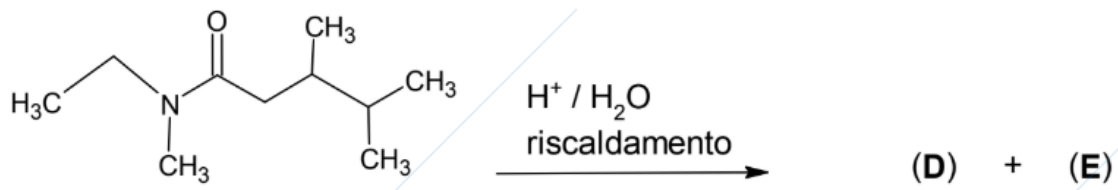
**A** + **B**

basi

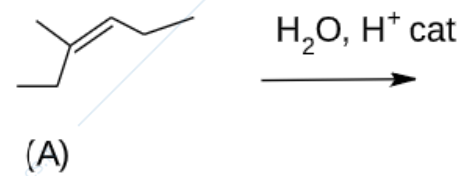
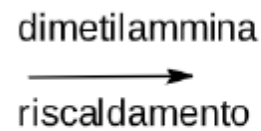


H<sup>+</sup> / H<sub>2</sub>O  
riscaldamento

**(D)**

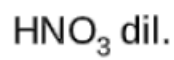
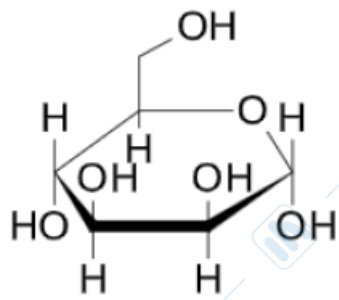


(B)

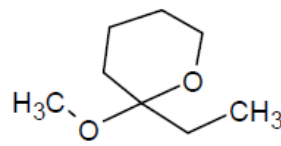
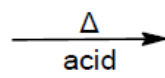
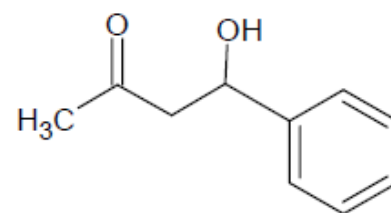
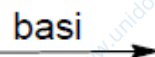
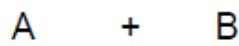


(B)





(B)



+ D (inorganico)

