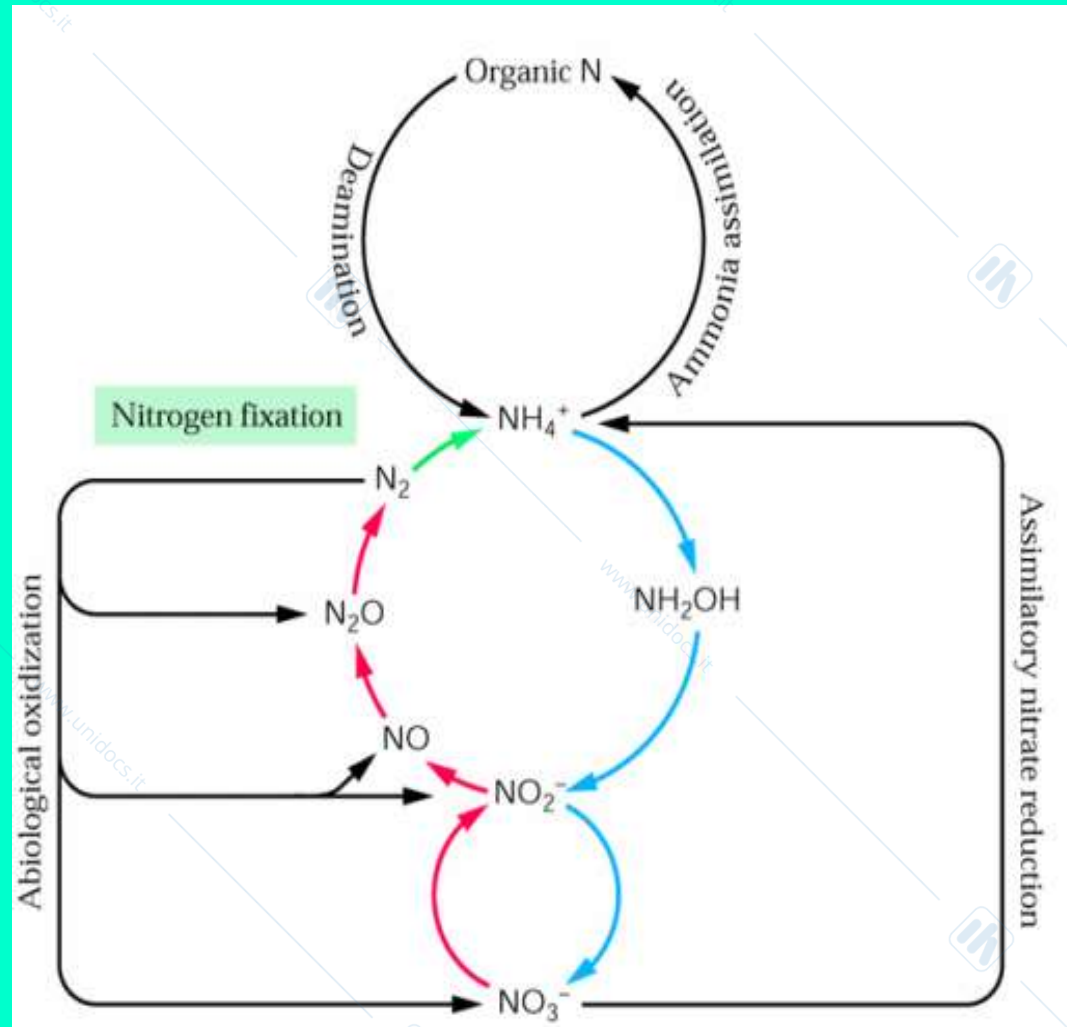
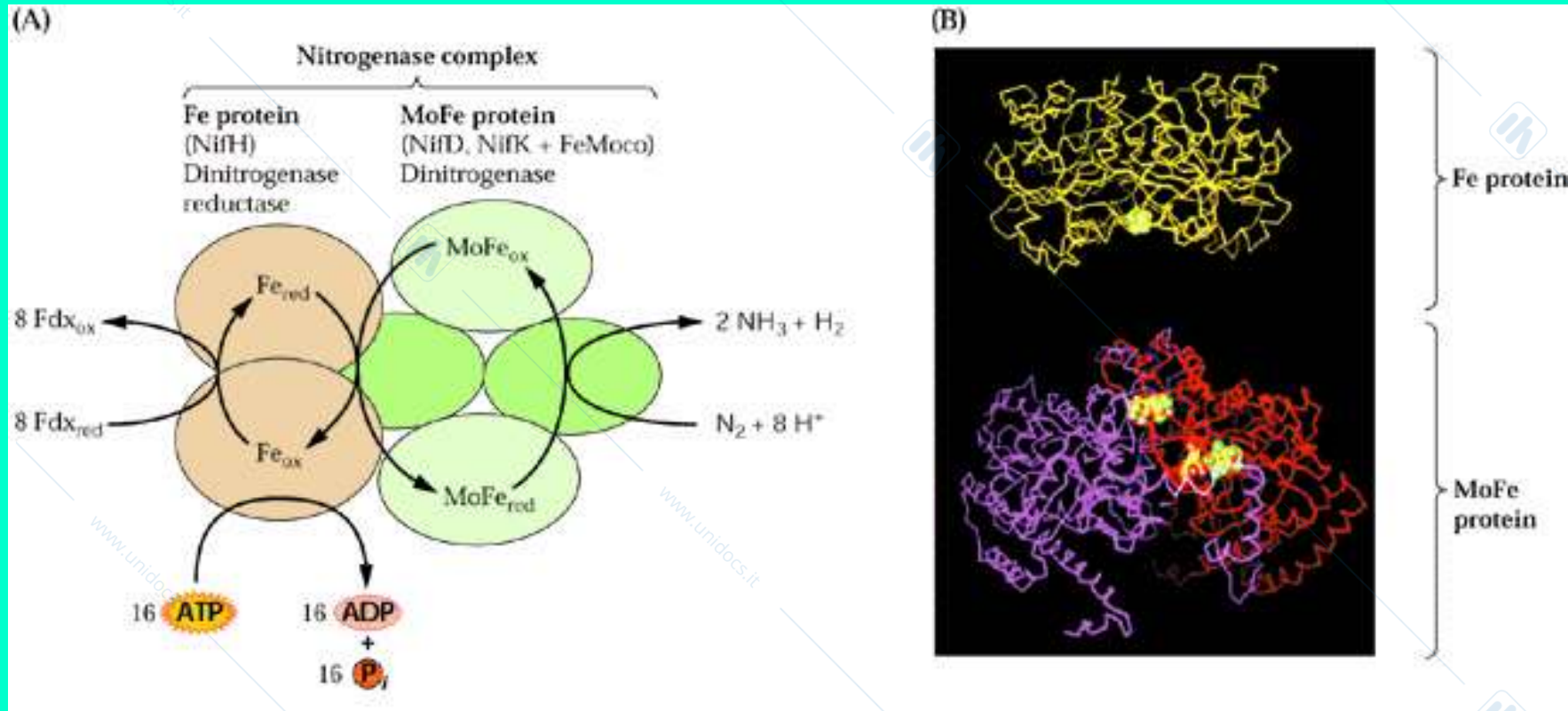


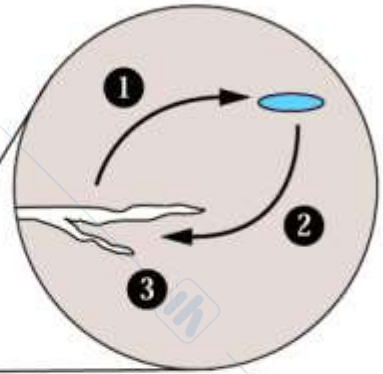
# Ciclo dell'azoto

- Deaminazione
- Nitrificazione
- Denitrificazione
- Riduzione dei nitrati
- Azotofissazione
- Assimilazione riduttiva

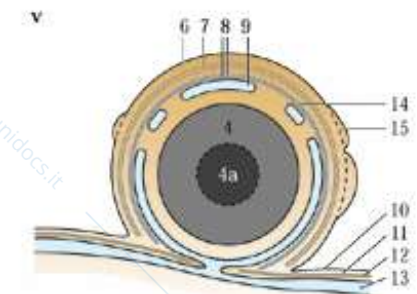
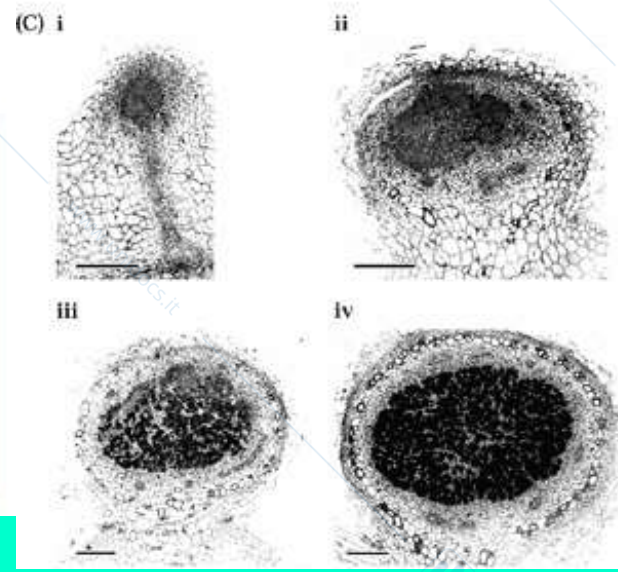
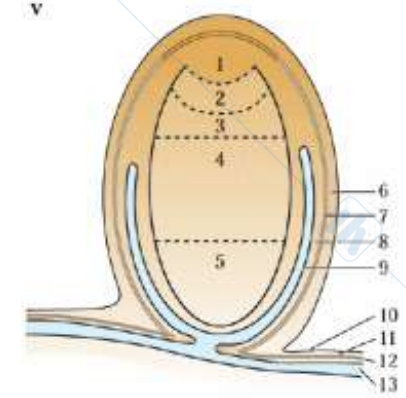
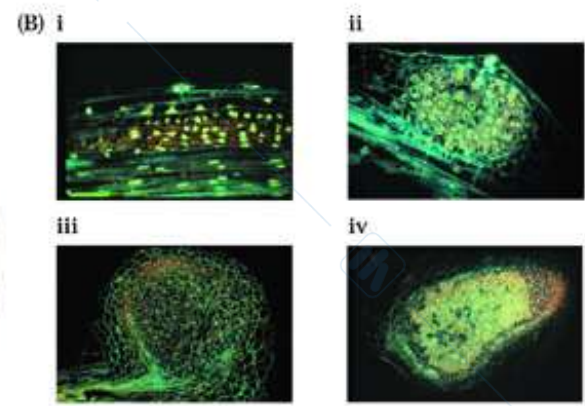
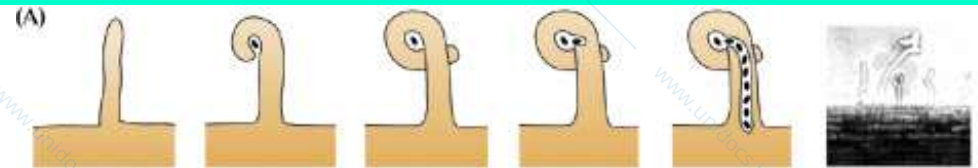


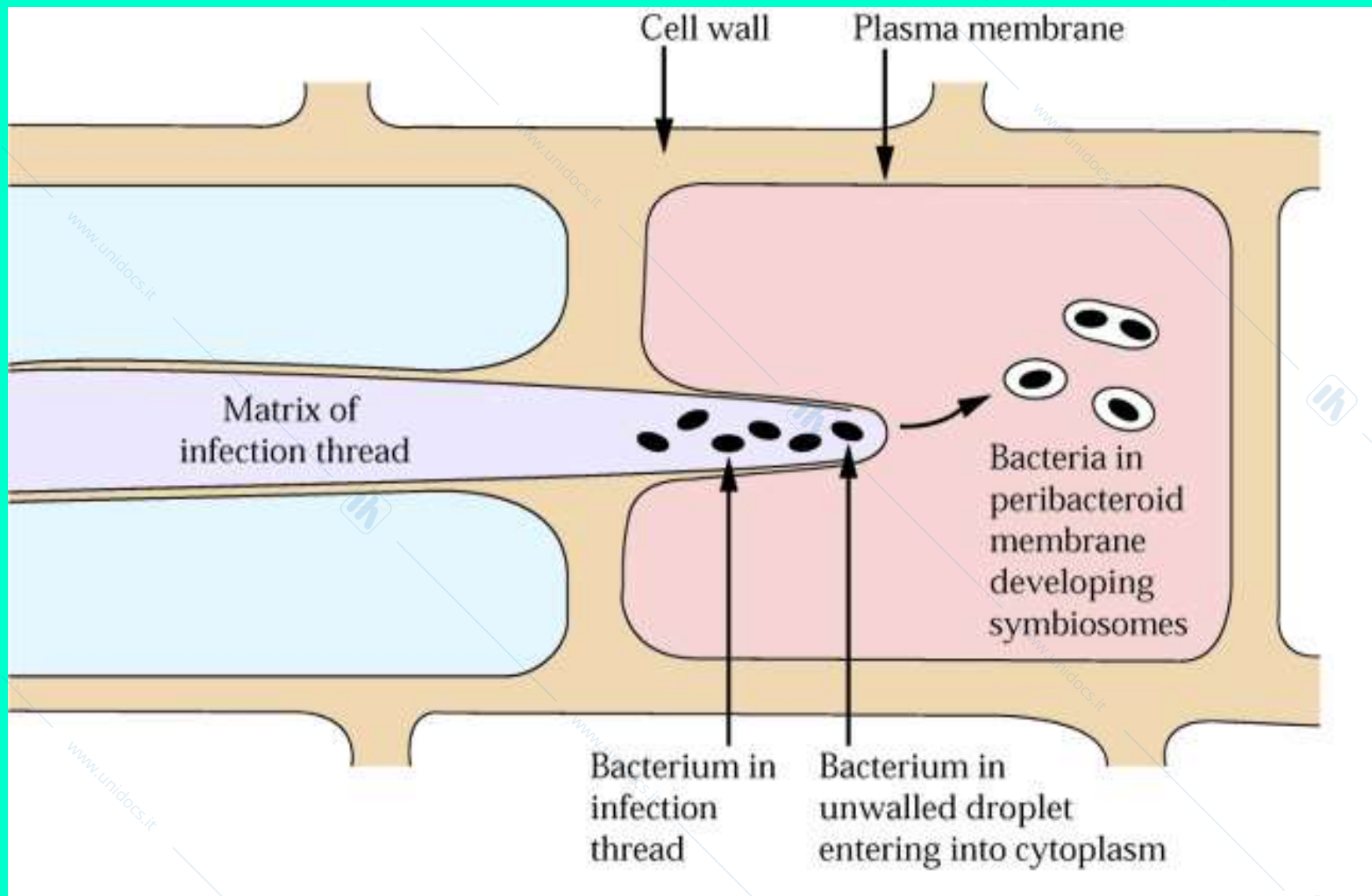
# Azotofissazione



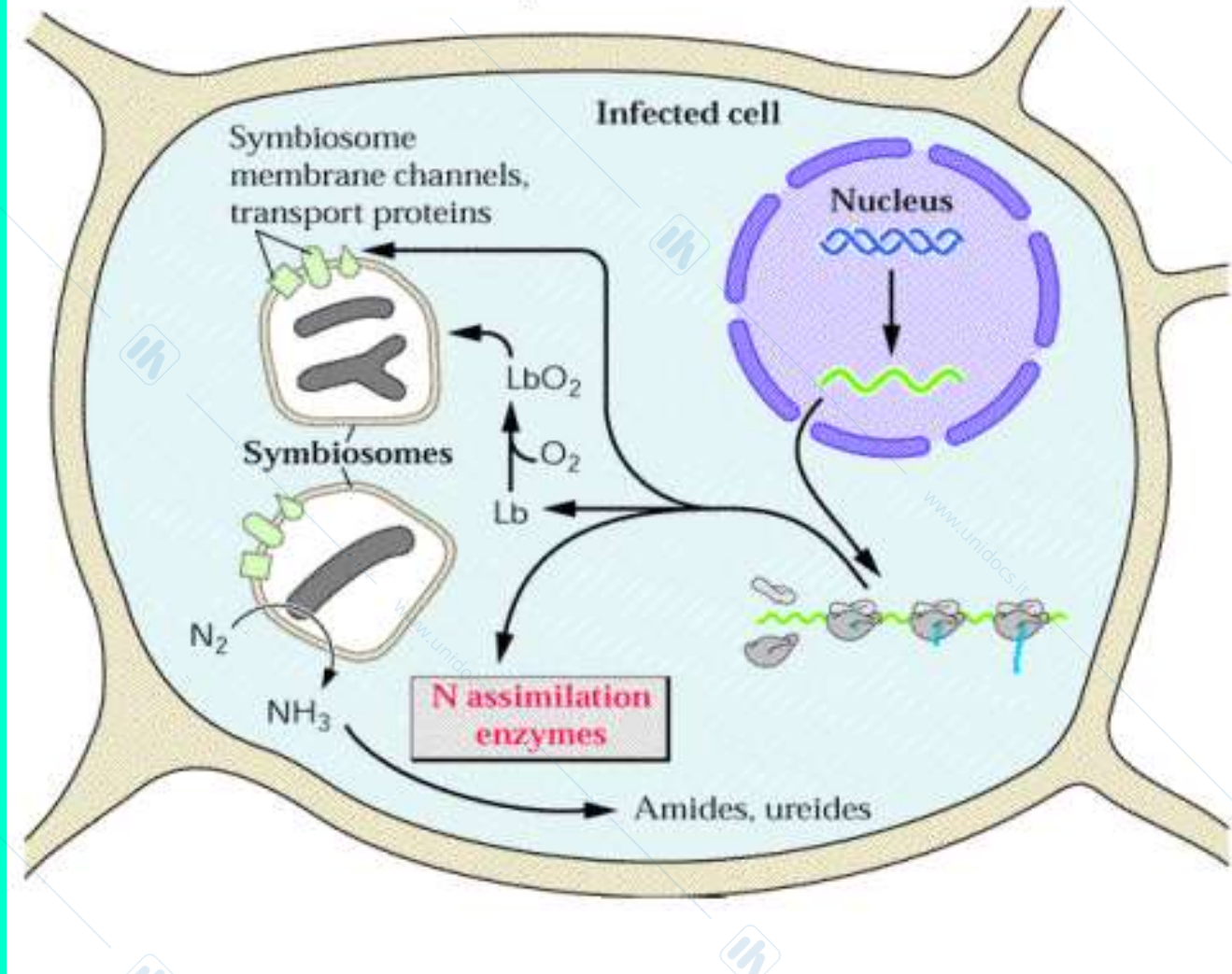


- 1** Plant root releases elicitors of *Nod* gene expression.
- 2** Bacterium releases Nod factor.
- 3** Plant root demonstrates ion fluxes, expresses nodulin proteins, is infected, and undergoes nodule morphogenesis.

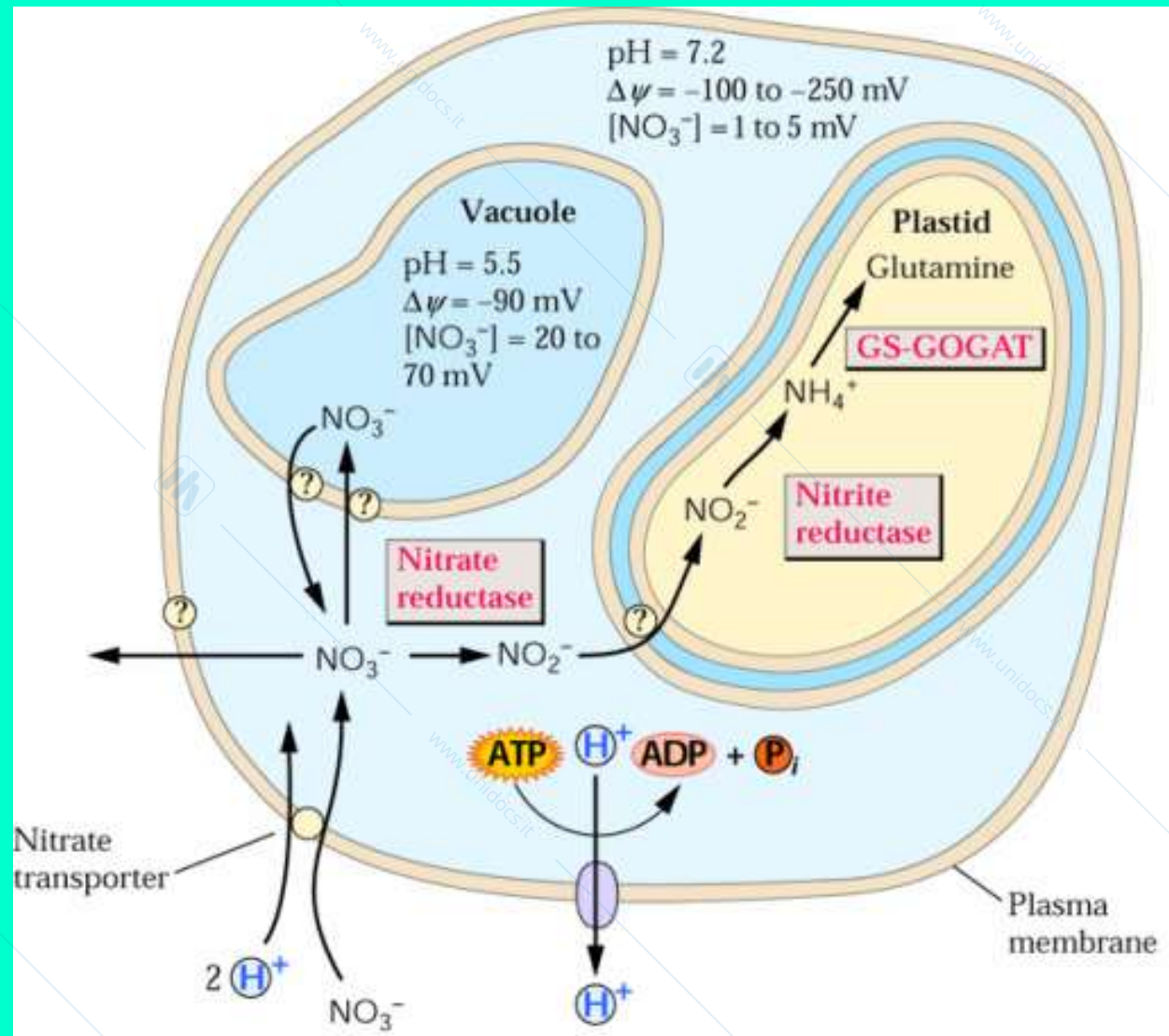


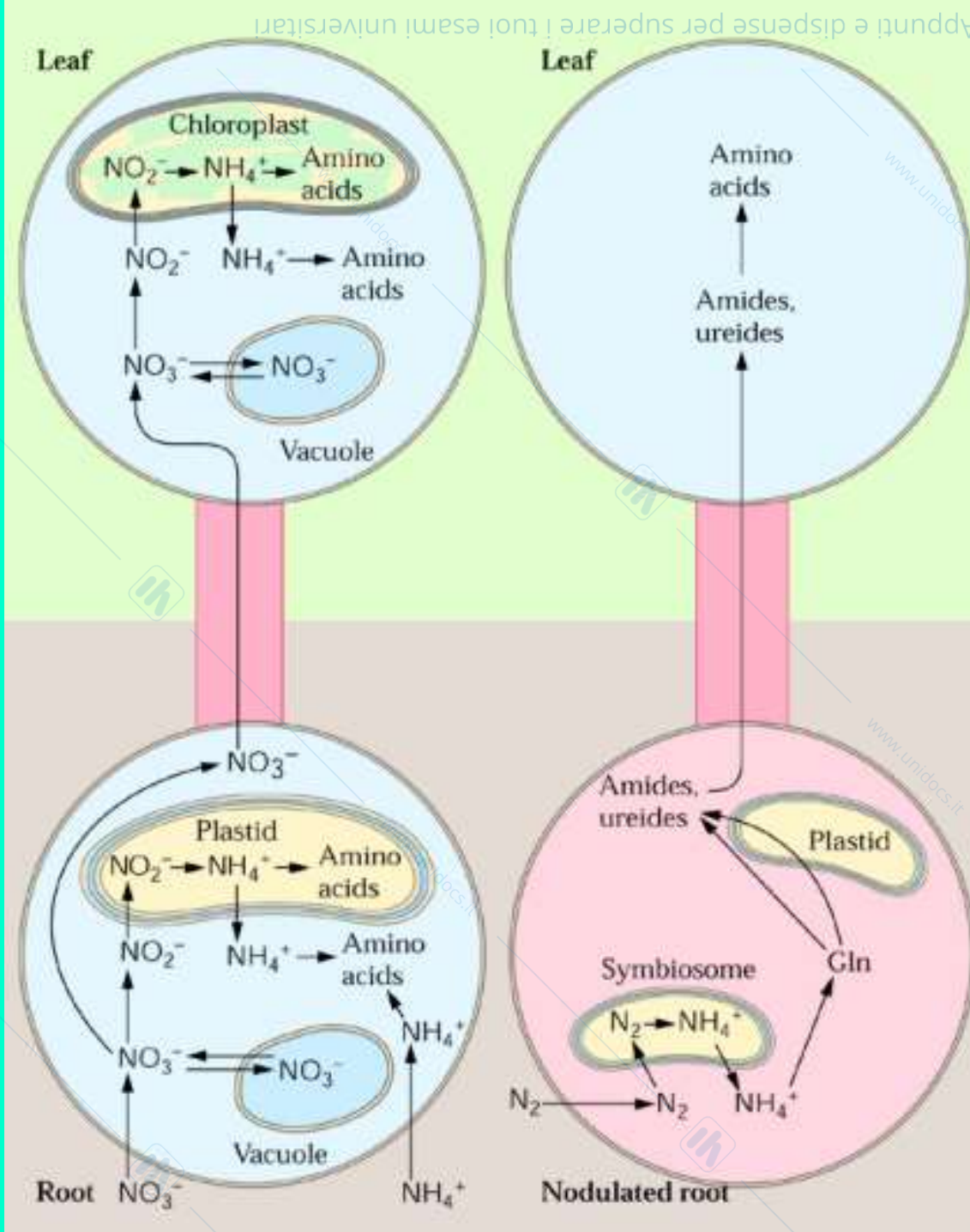


Uninfected cells express nodulins involved in assimilation, transport

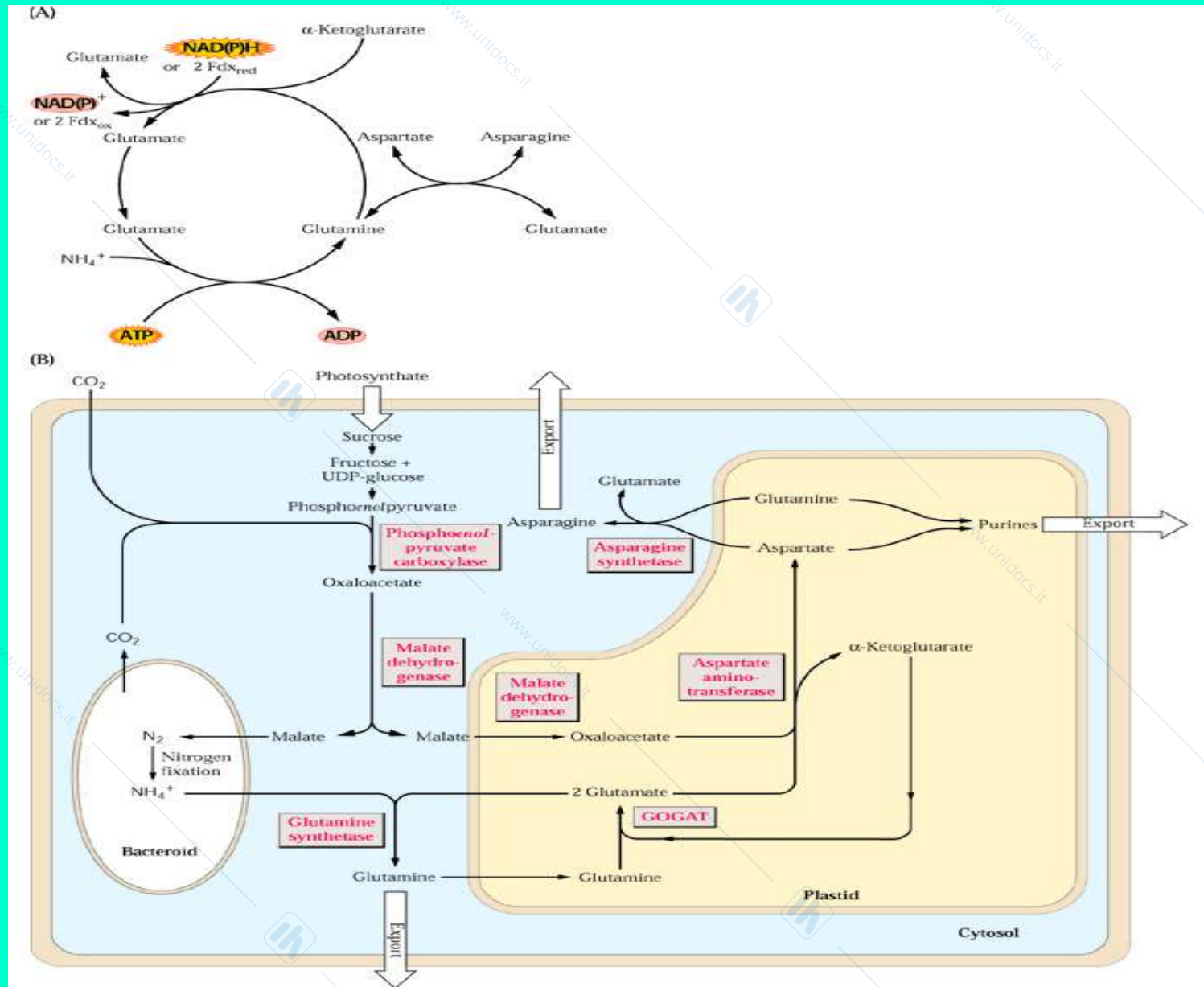


# Riduzione dei nitrati





# Assimilazione dell' $\text{NH}_4^+$ (aminazione riduttiva)



# Biosintesi aa

