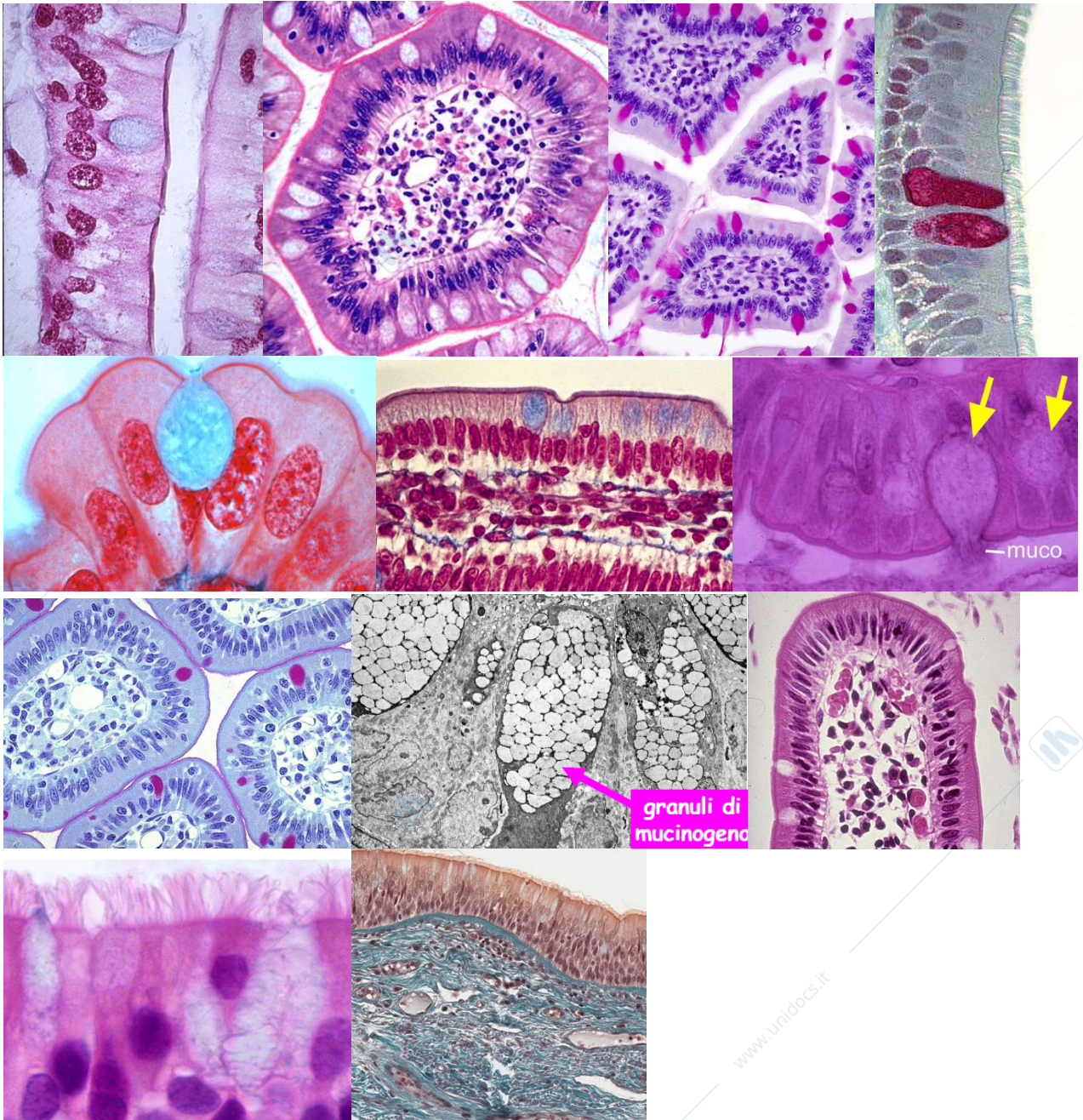
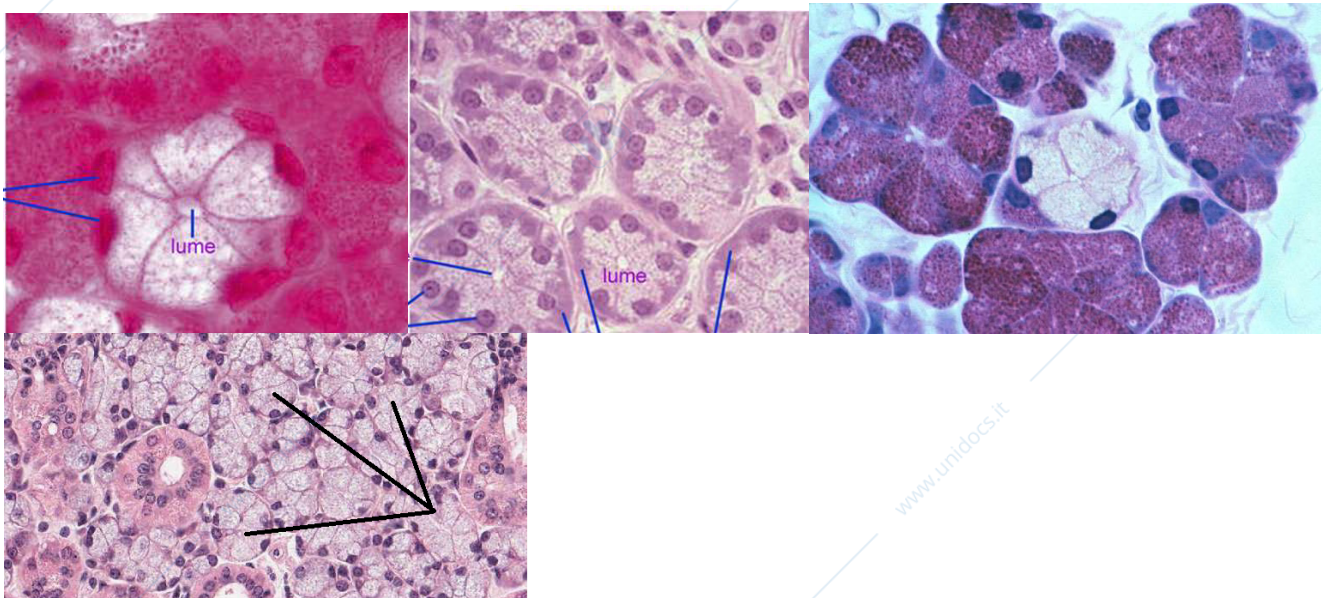


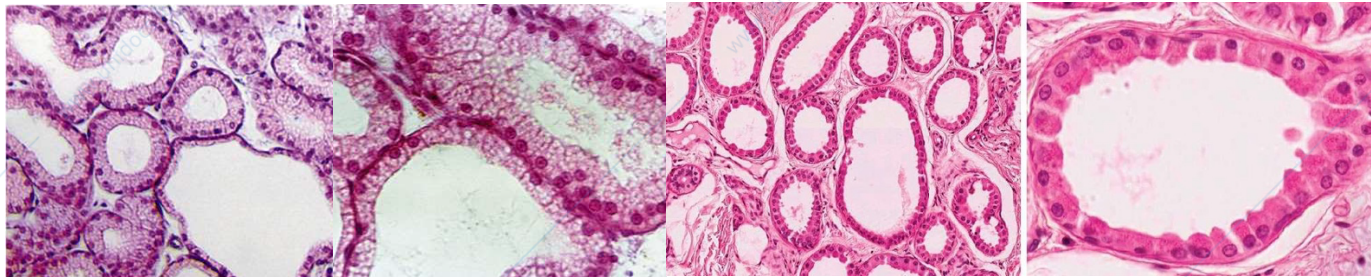
CELLULE CALICIFORMI MUCIPARE



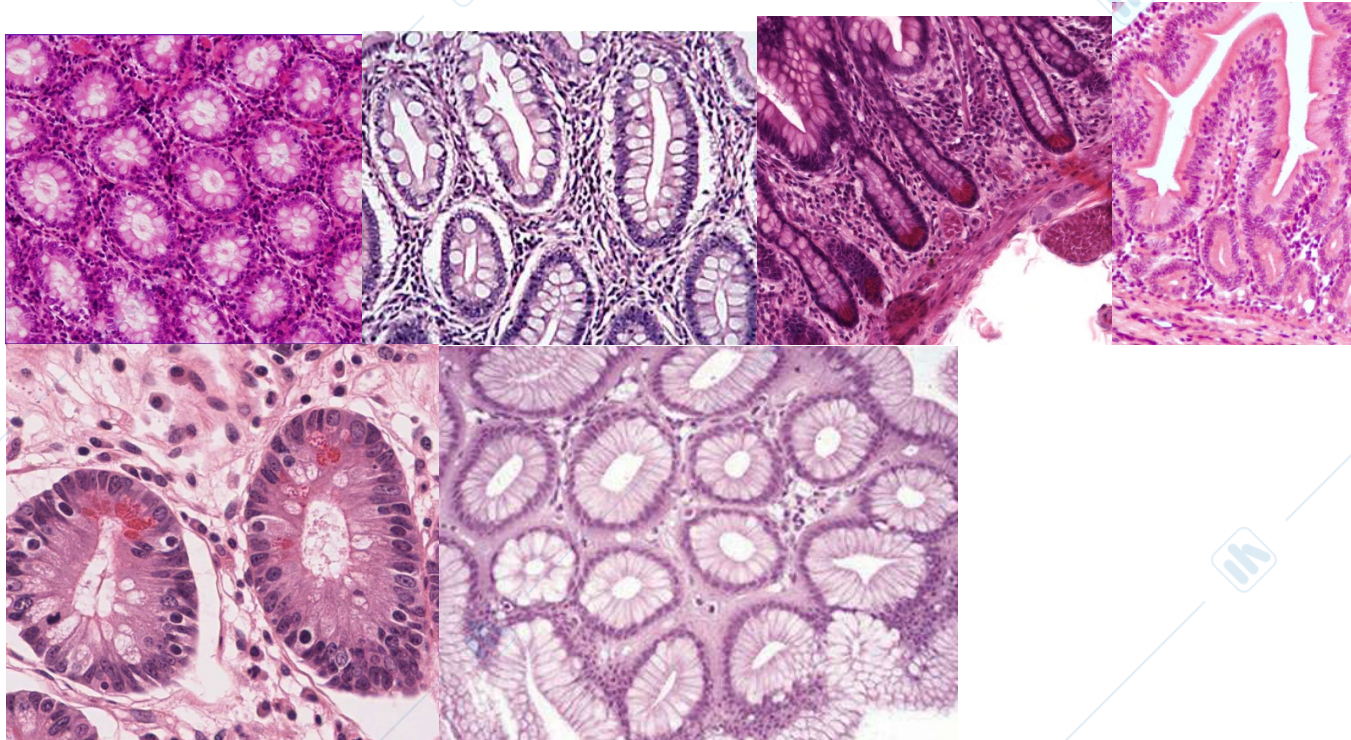
ADENOMERI ACINOSI SEMPLICI



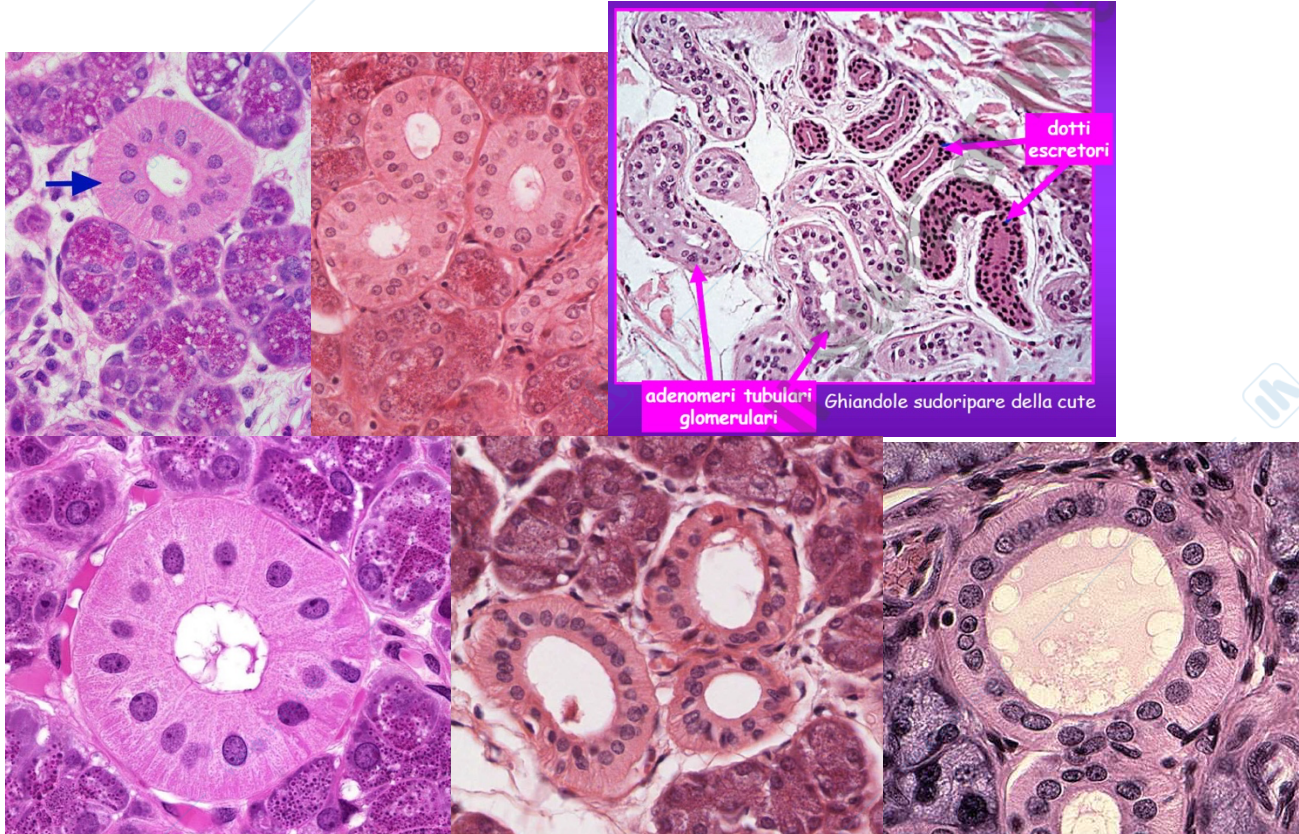
ADENOMERI ALVEOLARI SEMPLICI



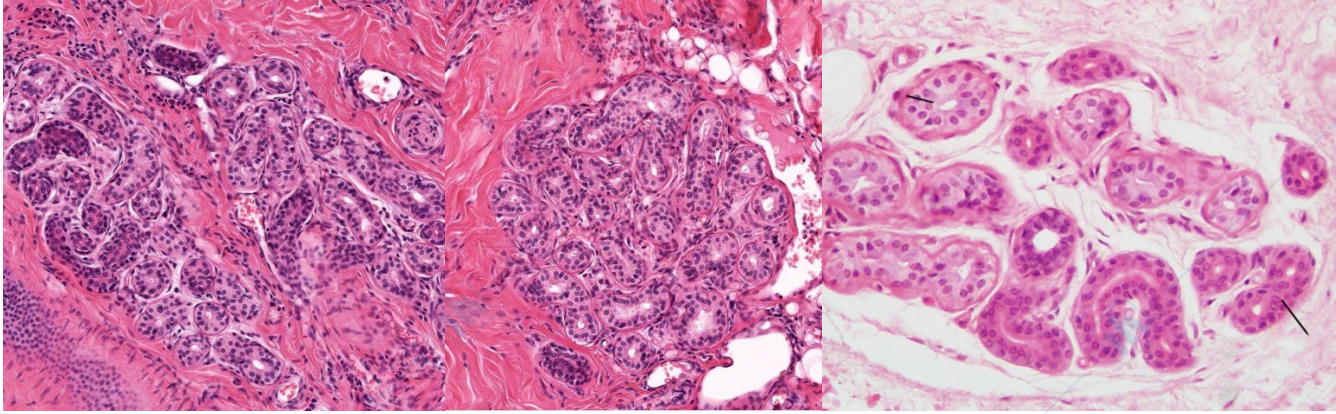
ADENOMERI TUBULARI SEMPLICI



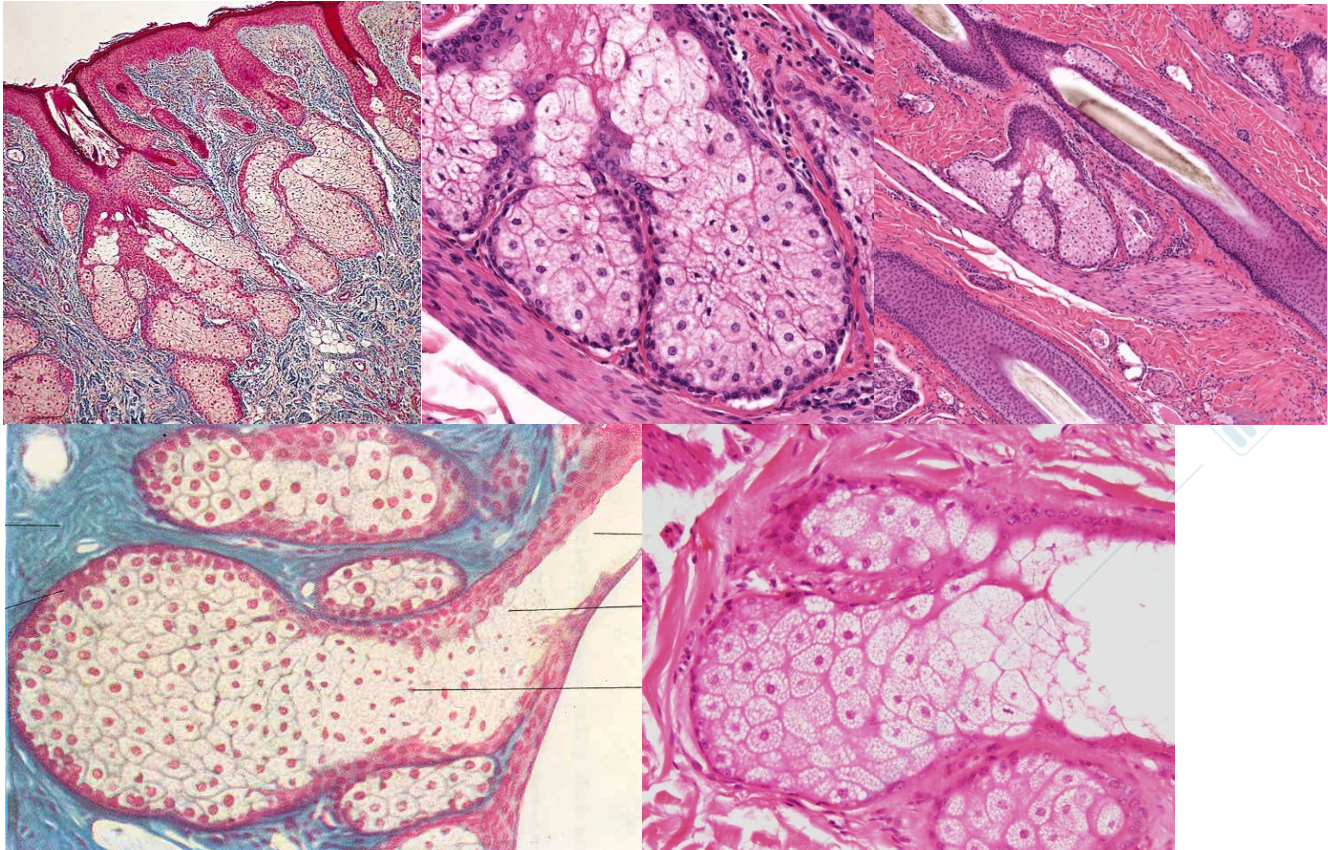
DOTTI ESCRETORI



GHIANDOLE TUBULARI GLOMERULARI



GHIANDOLE ACINOSE RAMIFICATE



ALTRE GHIANDOLE ESOCRINE PLURICELLULARI

