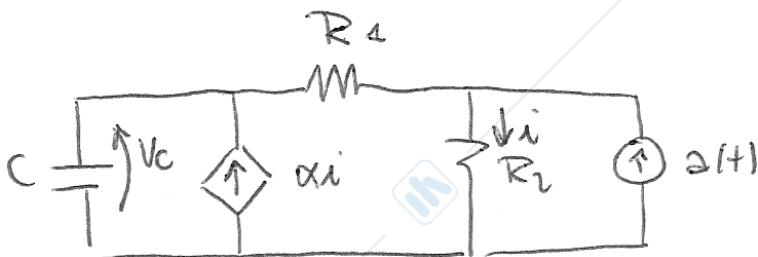
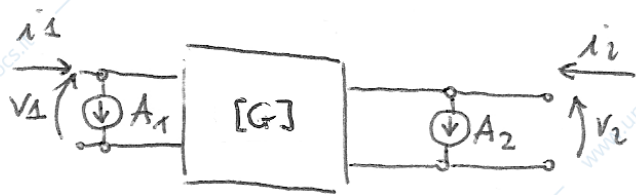
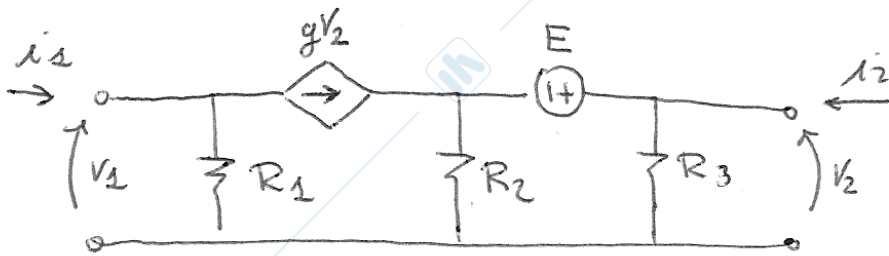


1) Del doppio bipolo lineare affini si determini la rappresentazione equivalente "alla Norton".

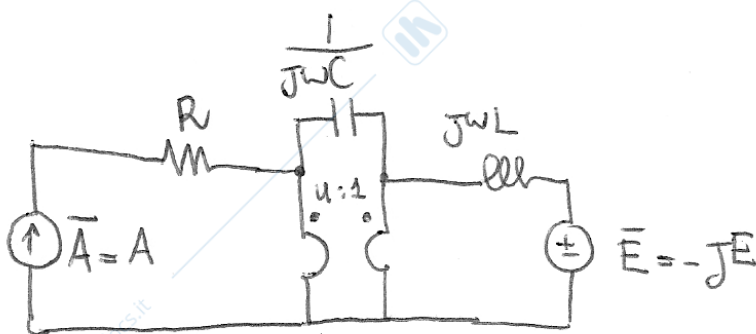


• determinare l'equazione di stato del circuito

• sia $\delta(t) = A_1 \mu(t-1) + A_2 \mu(1-t)$ con $A_1 > A_2 > 0$

determinare $v_C(t)$ per $t \in [1, +\infty)$ e $i(t)$ nello stesso intervallo di tempo.

3)



Determinare la potenza attiva erogata da \bar{A} .