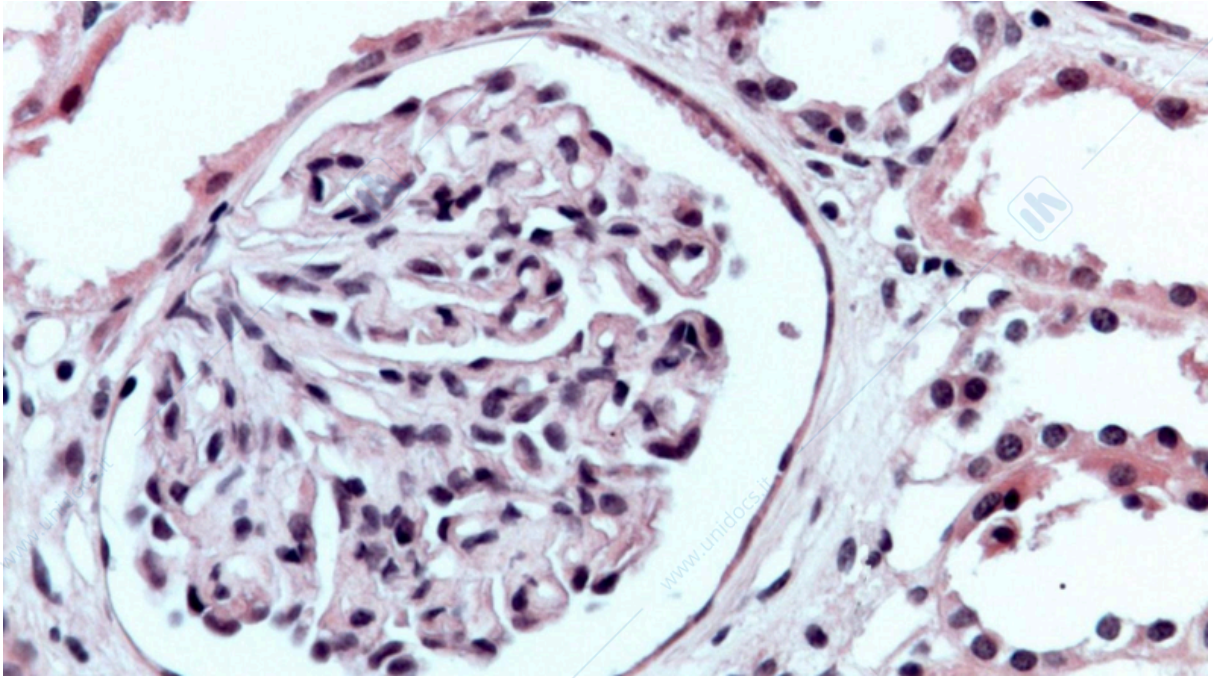
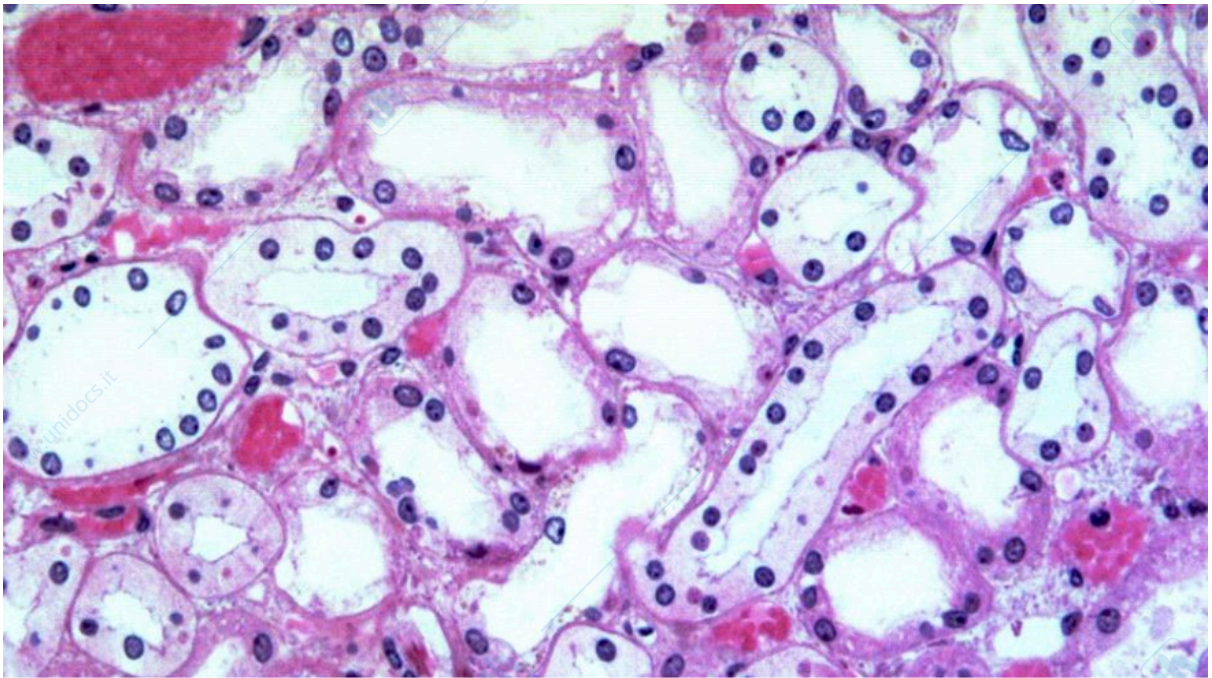


EPITELIO PAVIMENTOSO O SQUAMOSO



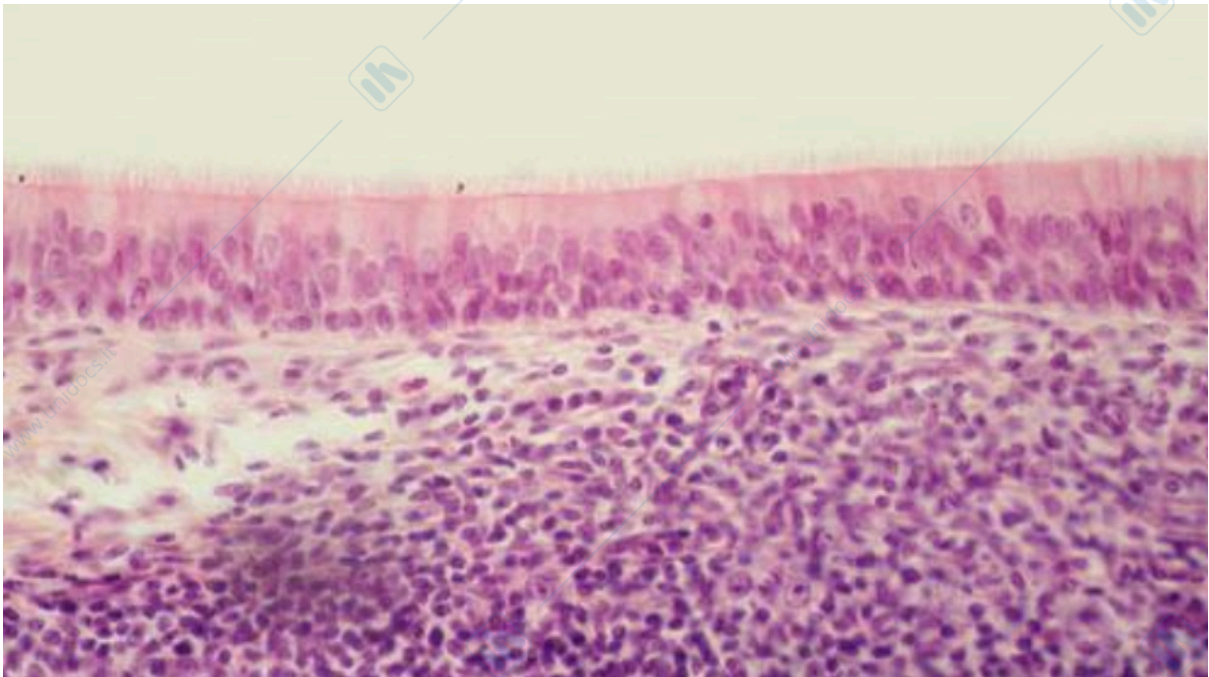
EPITELIO CUBICO O ISOPRISMATICO



EPITELIO CILINDRICO O BATIPRISMATICO



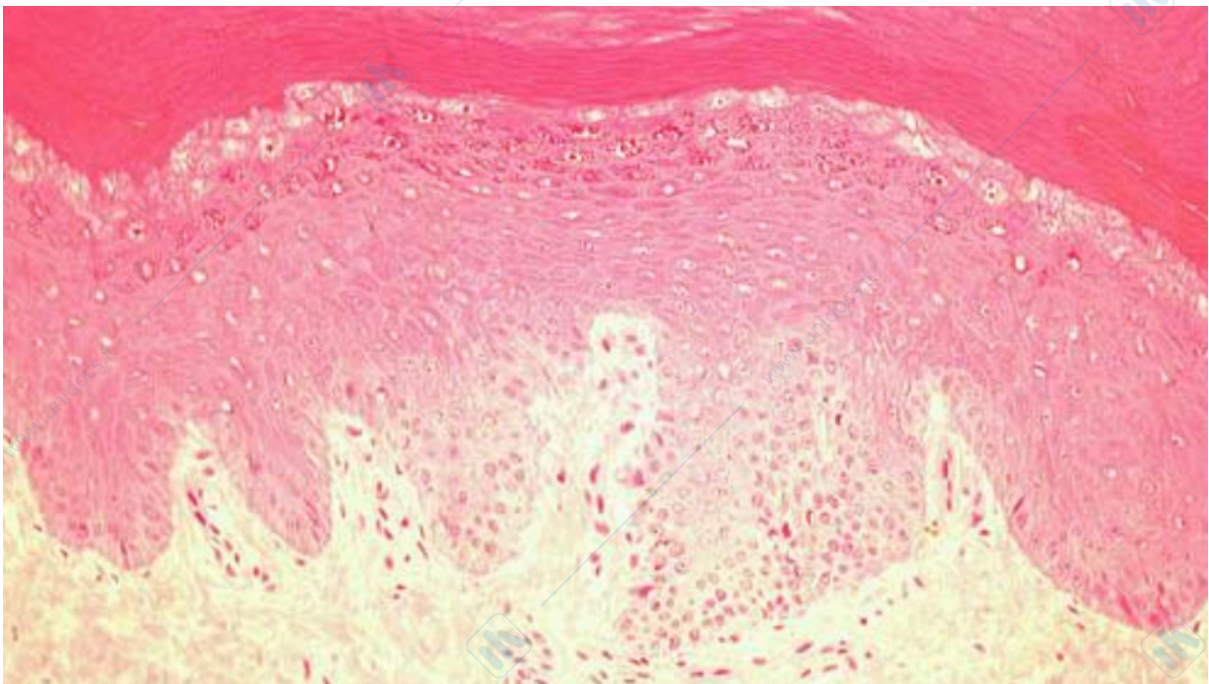
EPITELIO PSEUDOSTRATIFICATO



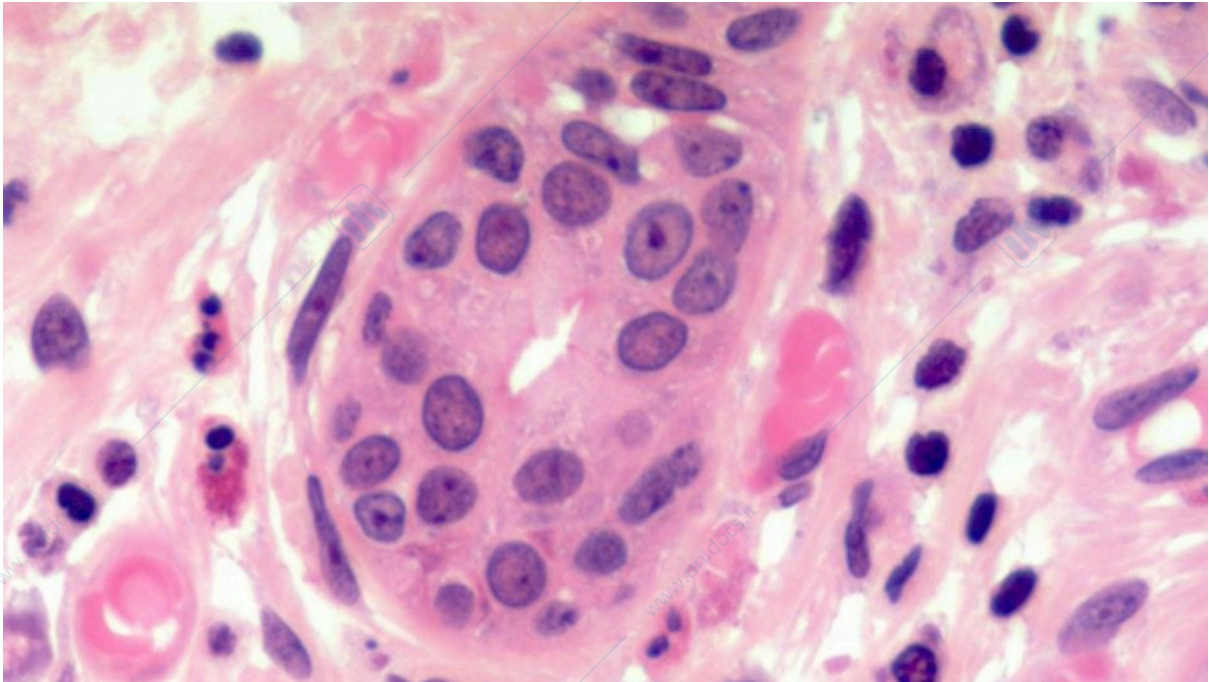
EPITELIO PAVIMENTOSO STRATIFICATO NON CHERATINIZZATO



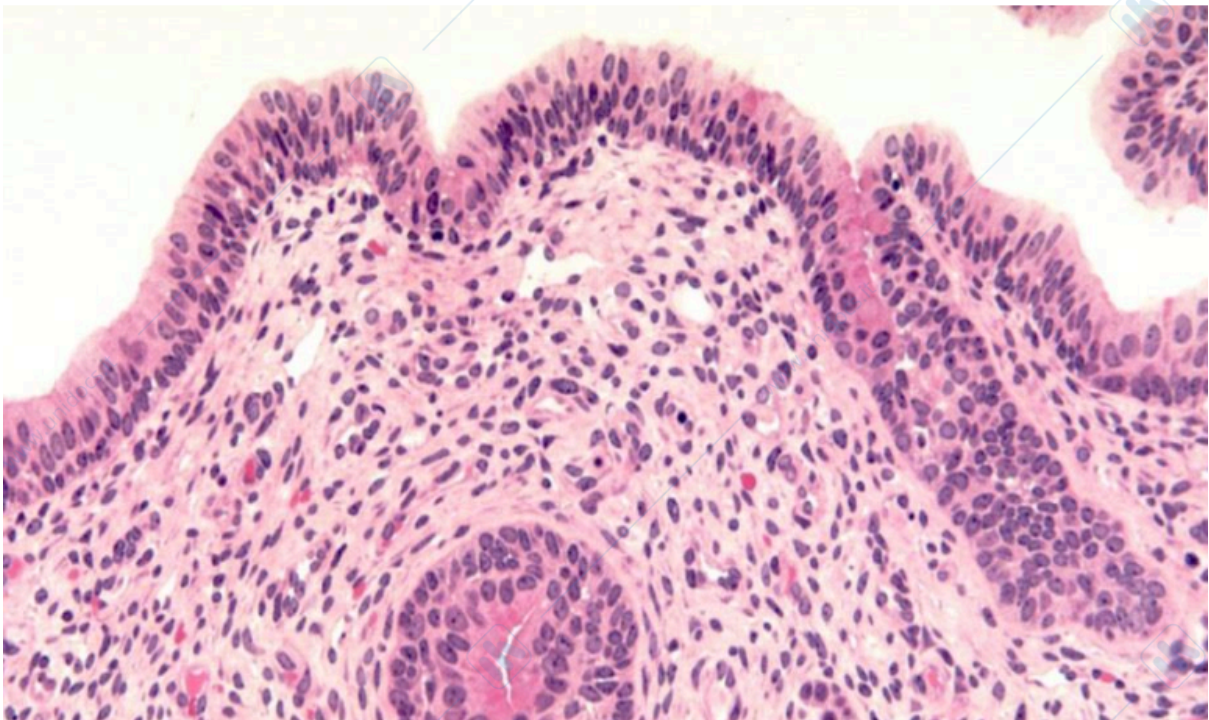
EPITELIO PAVIMENTOSO STRATIFICATO CHERATINIZZATO



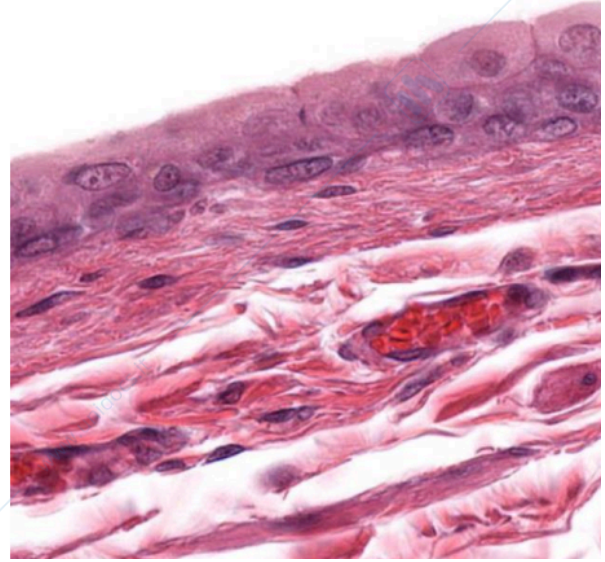
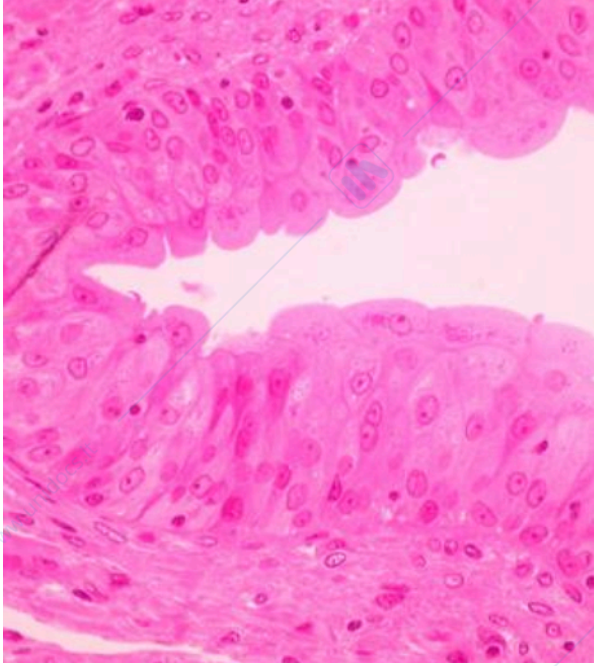
EPITELIO CUBICO STRATIFICATO



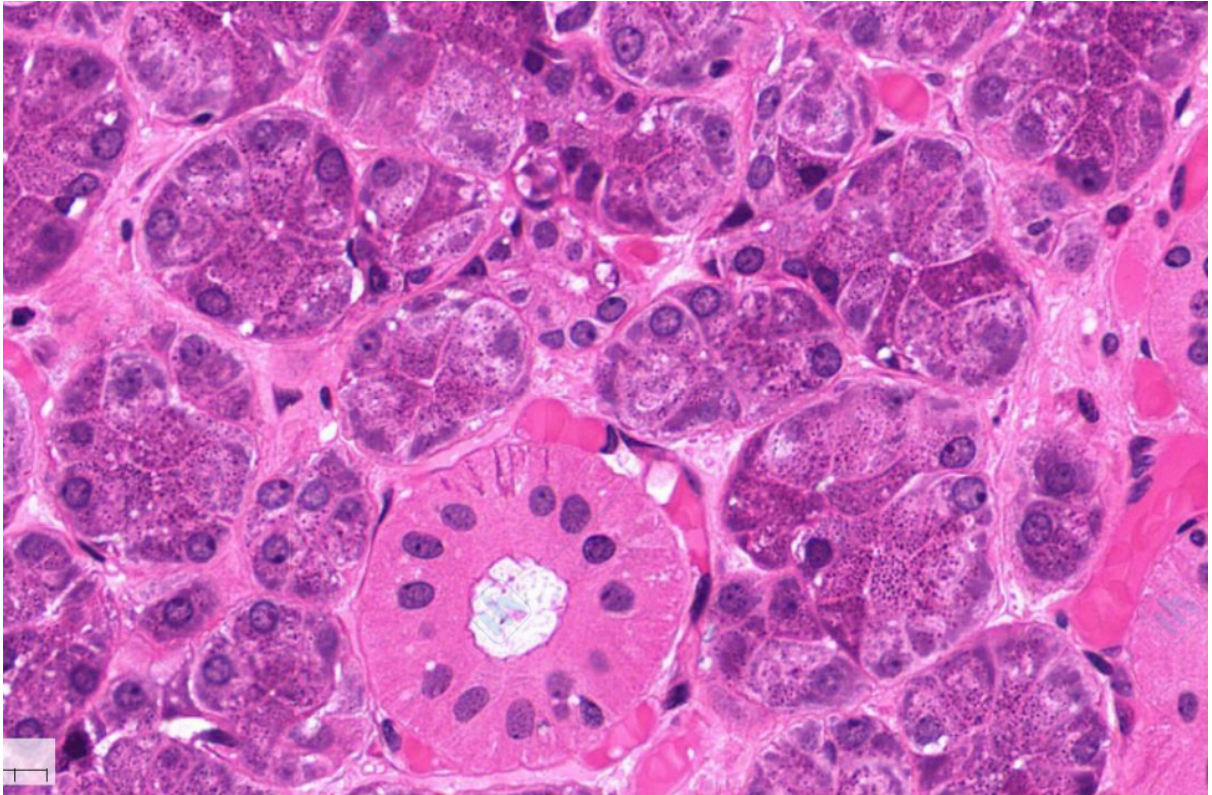
EPITELIO CILINDRICO STRATIFICATO



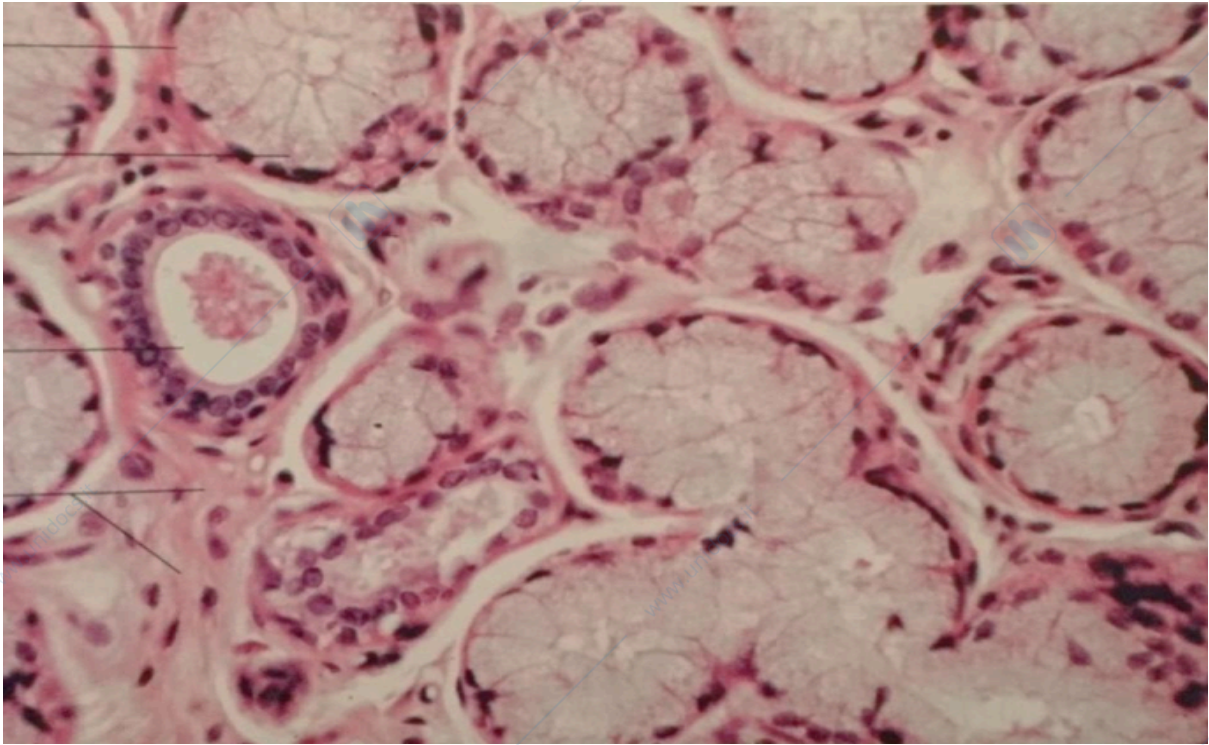
EPITELIO DI TRANSIZIONE



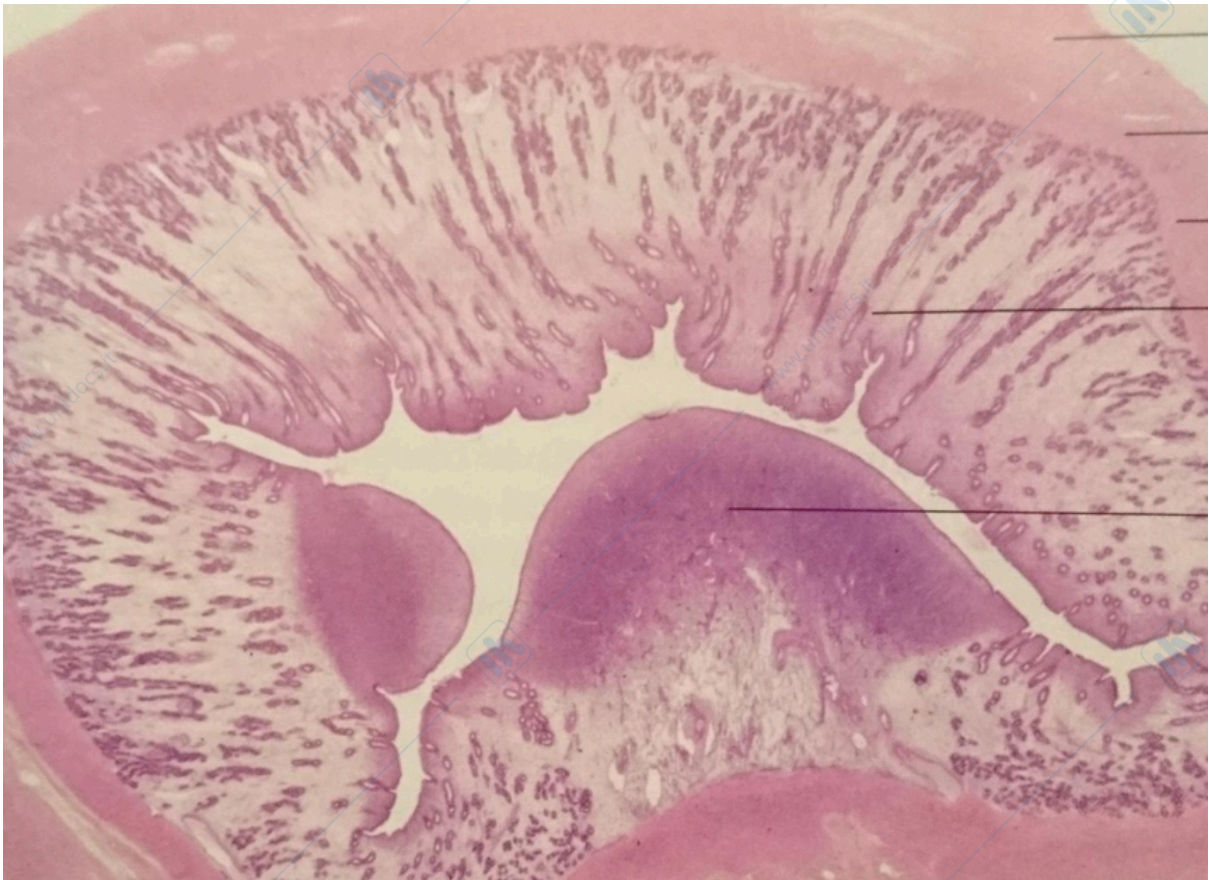
GHIANDOLE ESOCRINE A SECREZIONE SIEROSA



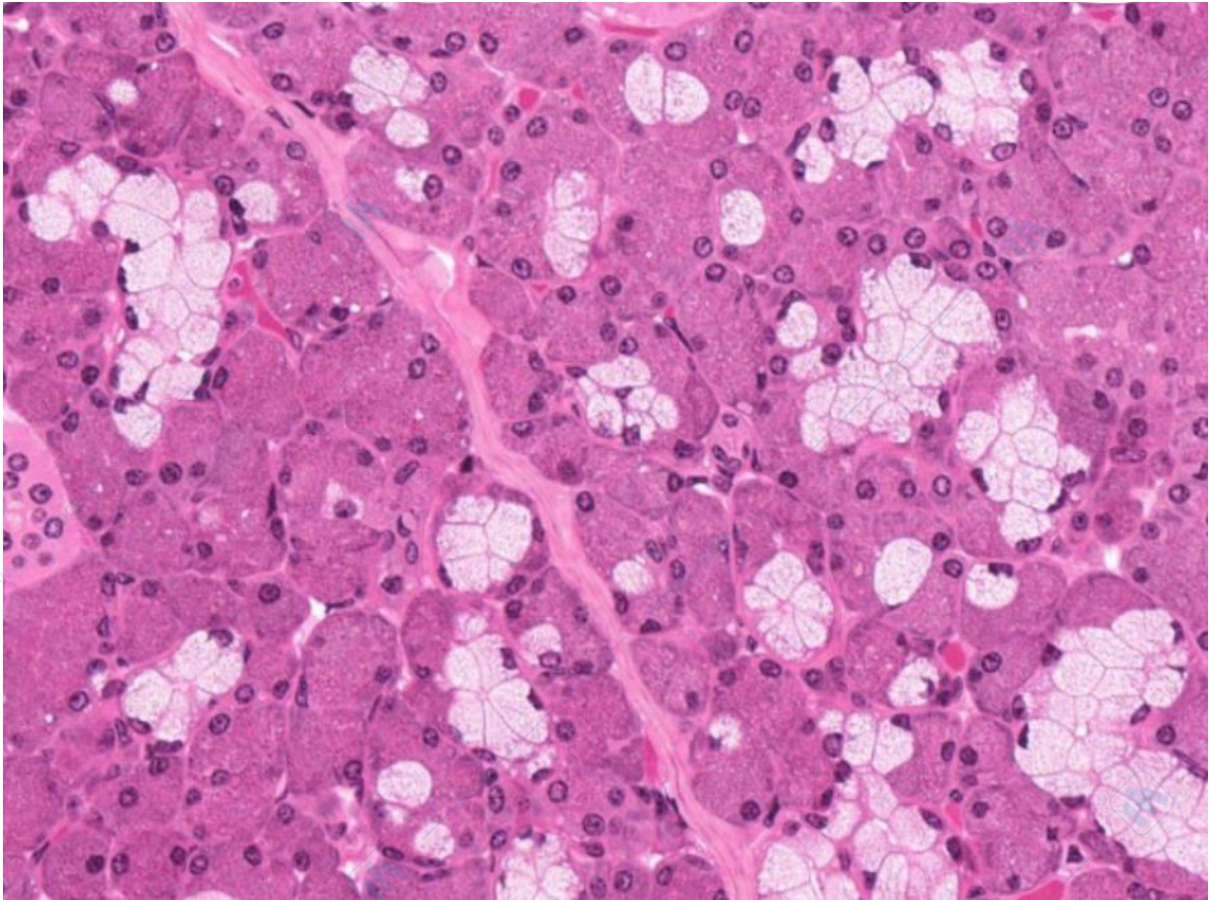
GHIANDOLE ESOCRINE A SECREZIONE MUCOSA



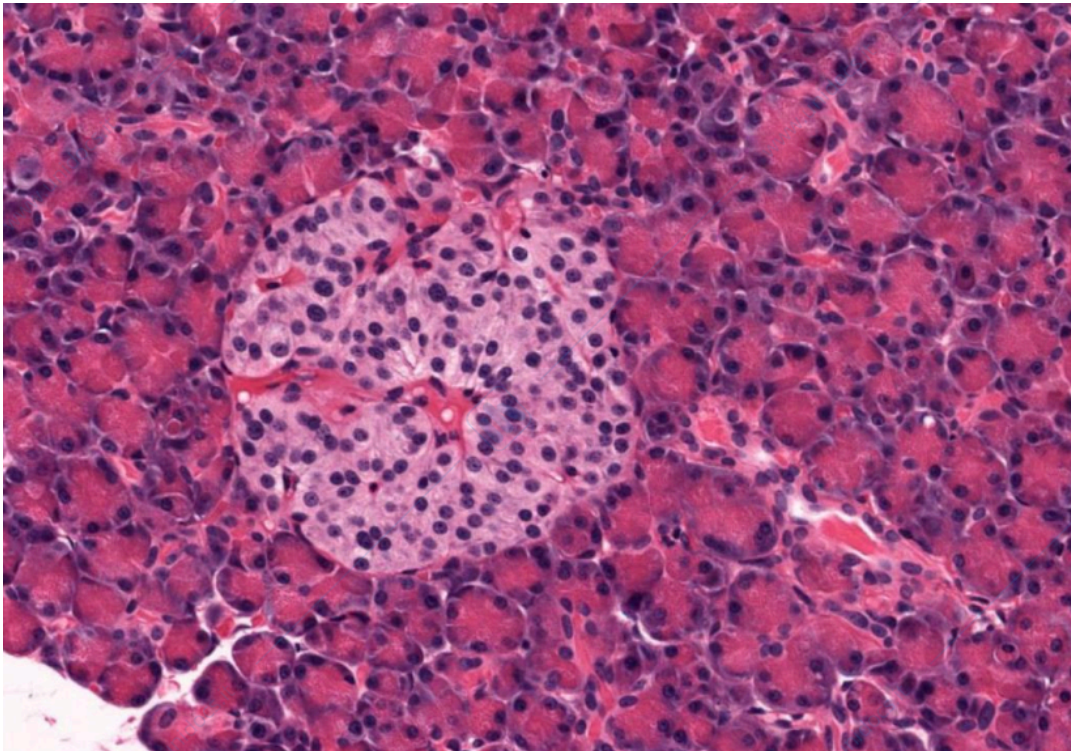
ESEMPIO GHIANDOLE ESOCRINE A SECREZIONE MUCOSA. UTERO



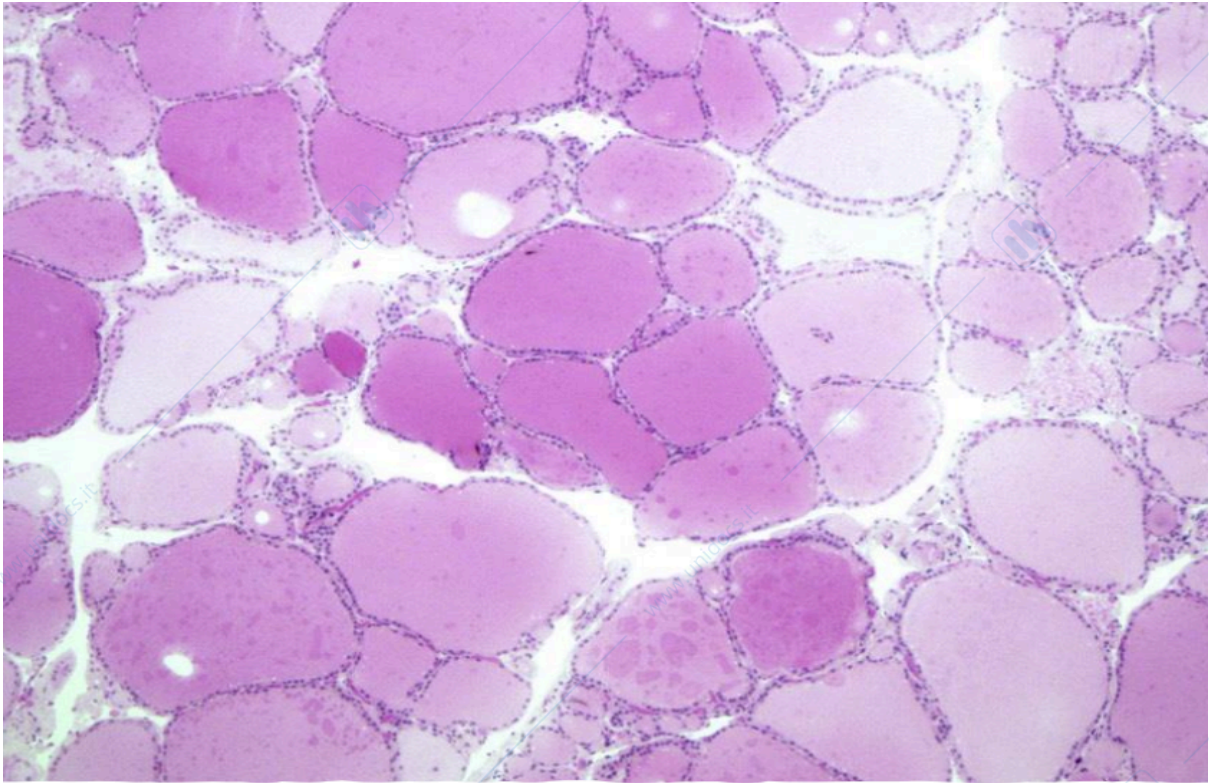
GHIANDOLE ESOCRINE A SECREZIONE MISTA SIERO-MUCOSA



GHIANDOLA ENDOCRINA INSULARE :PANCREAS
GHIANDOLE ESOCRINE A SECREZIONE SIEROSA
ISOLA DI LANGHERANS



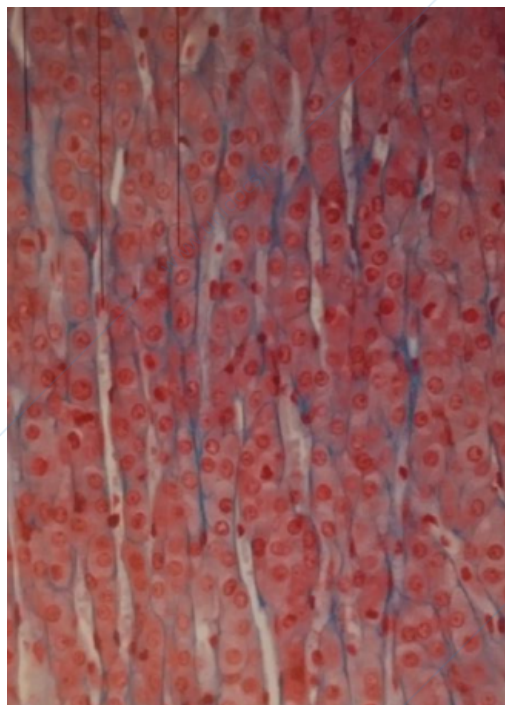
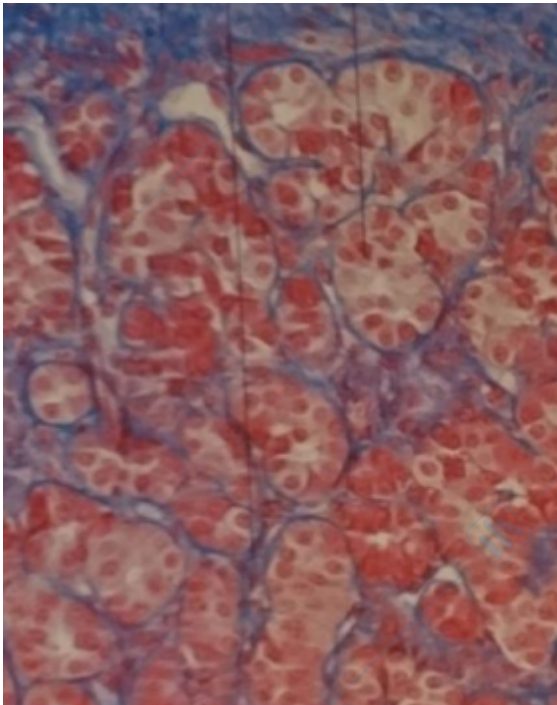
GHIANDOLA ENDOCRINA FOLLICOLARE: TIROIDE



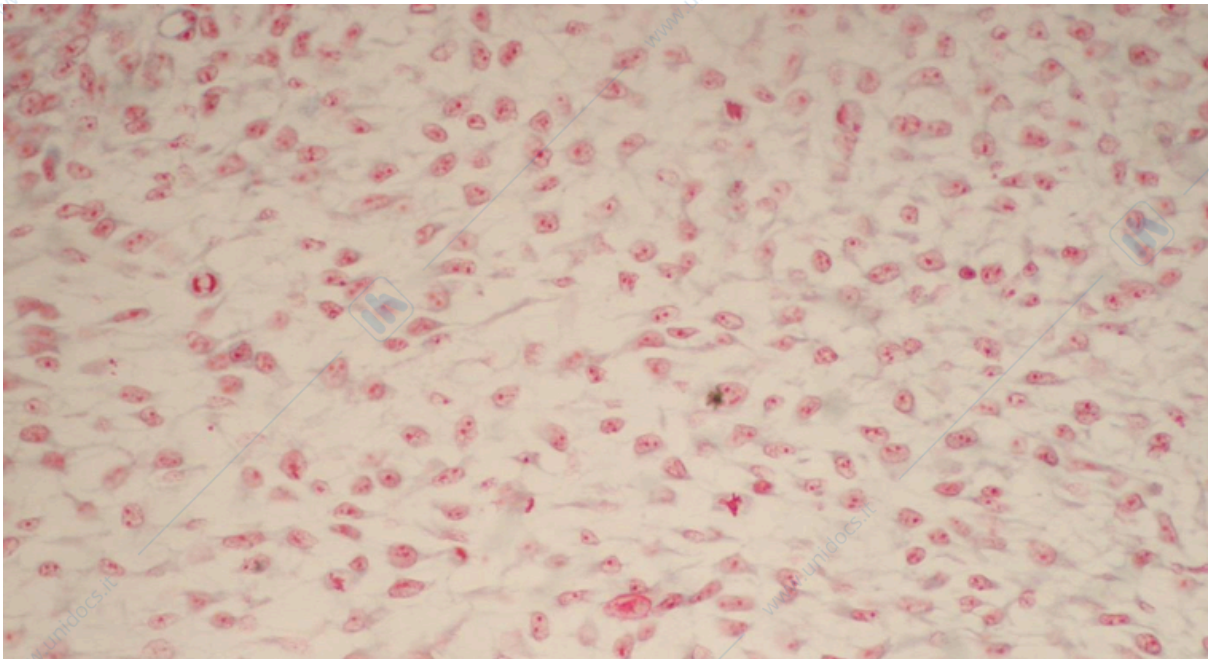
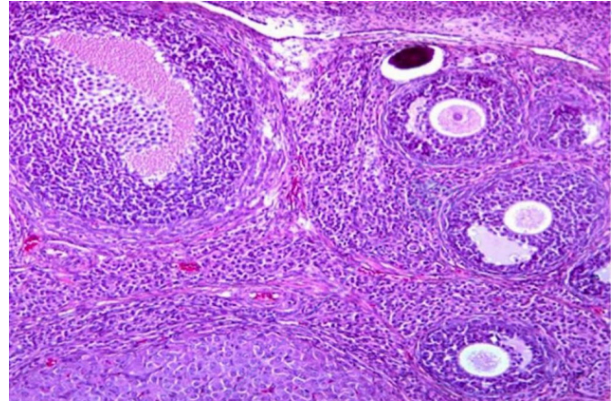
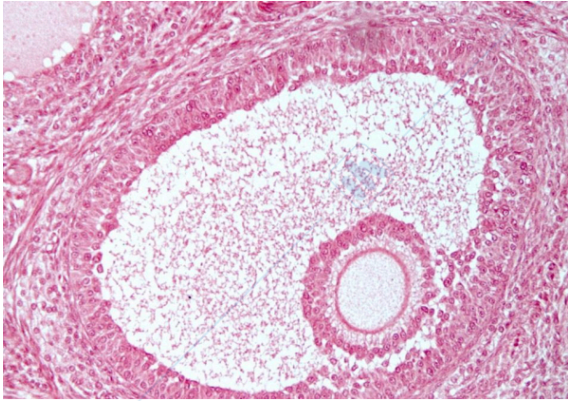
GHIANDOLA ENDOCRINA CORDONALE: CORTECCIA DEL SURRENE

A GOMITOLO PORZIONE ESTERNA

FASCICOLATA PORZIONE INTERNA



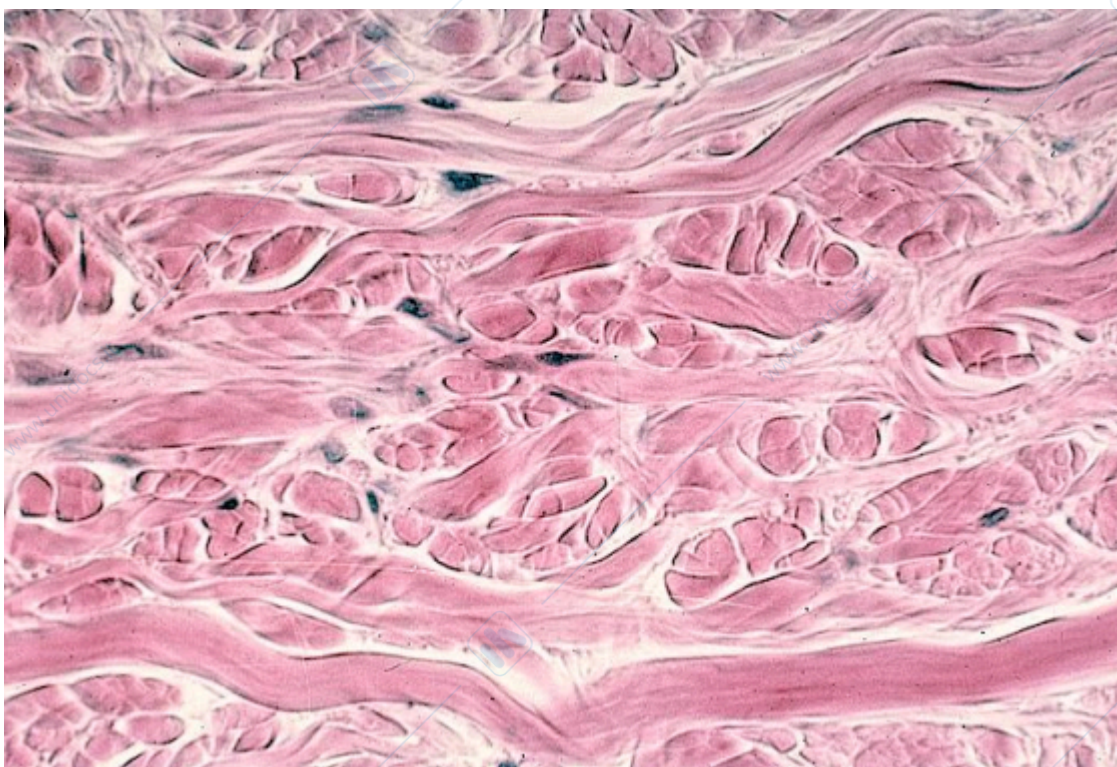
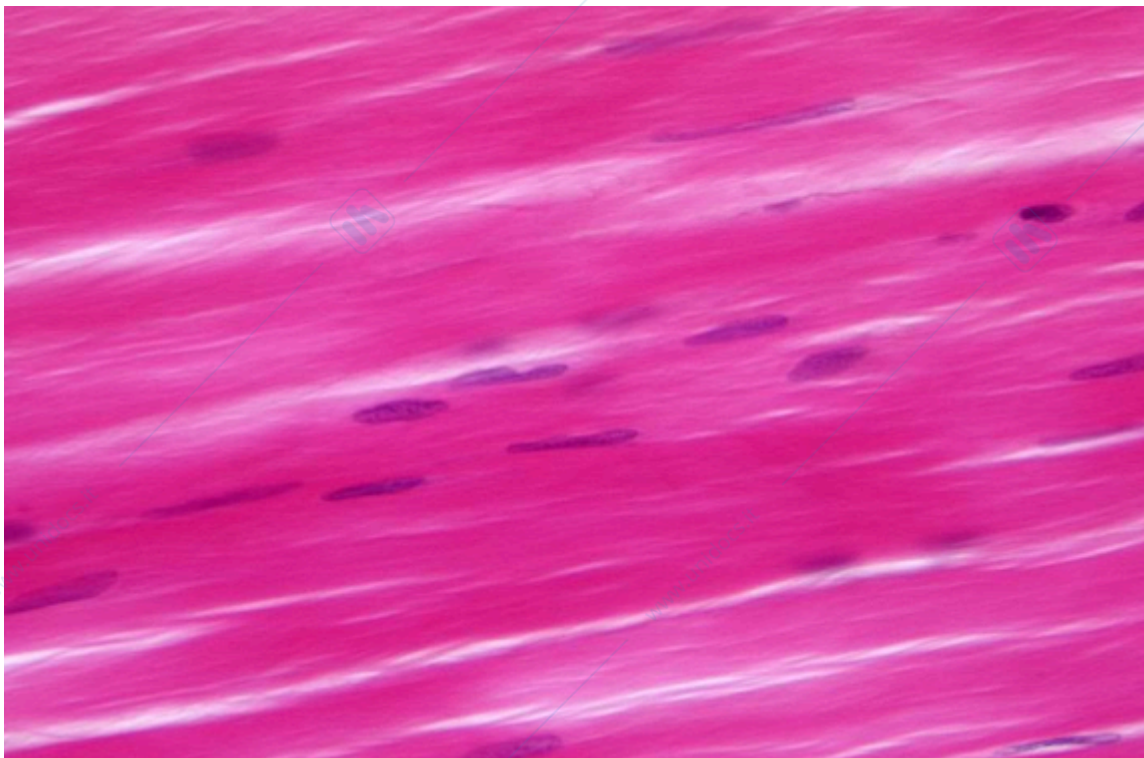
GHIANDOLA ENDOCRINA FOLLICOLARE: OVAIO
FOLLICOLO OVARICO



www.unidocs.it

www.unidocs.it

www.



www.unidocs.it - Appunti e dispense per superare i tuoi esami universitari

www.unidocs.it - Appunti e dispense per superare i tuoi esami universitari

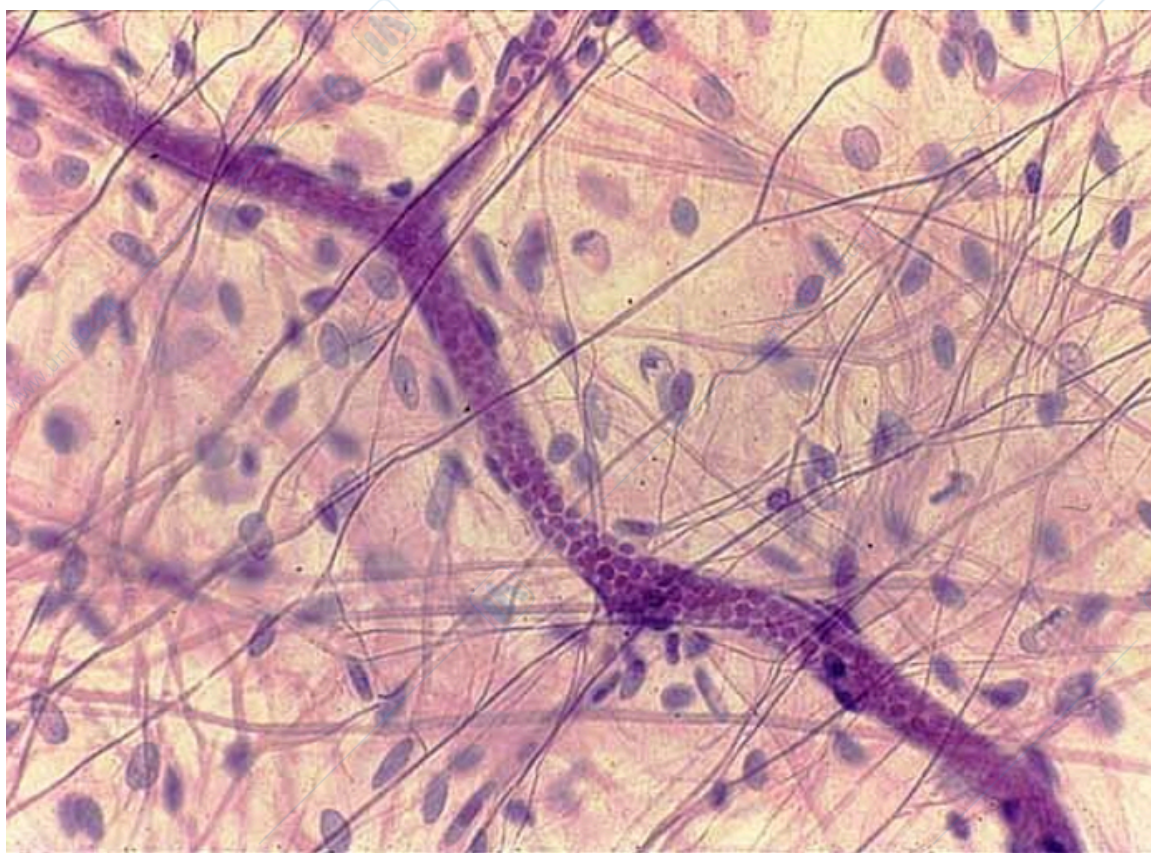
www.unidocs.it

www.unidocs.it

www.unidocs.it

www.unidocs.it

www.

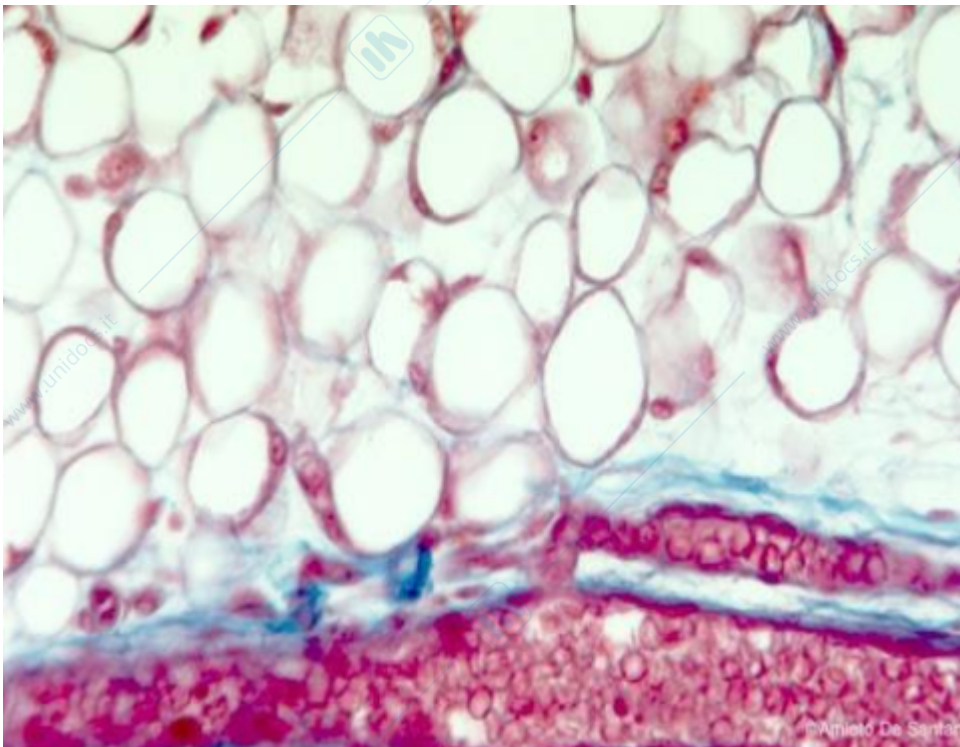


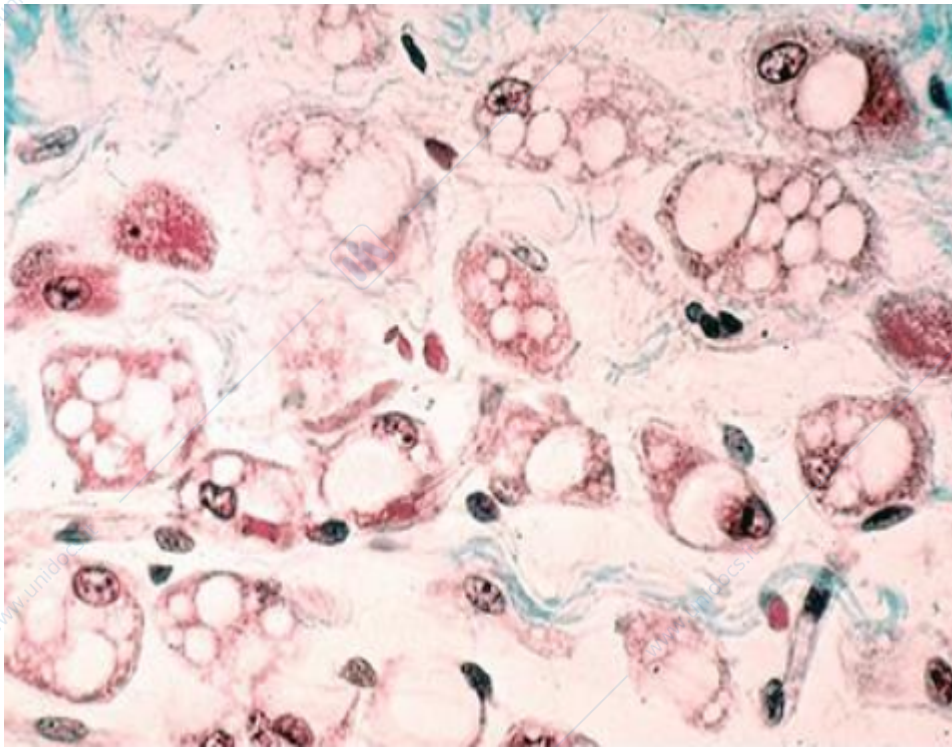
www.unidocs.it

www.unidocs.it

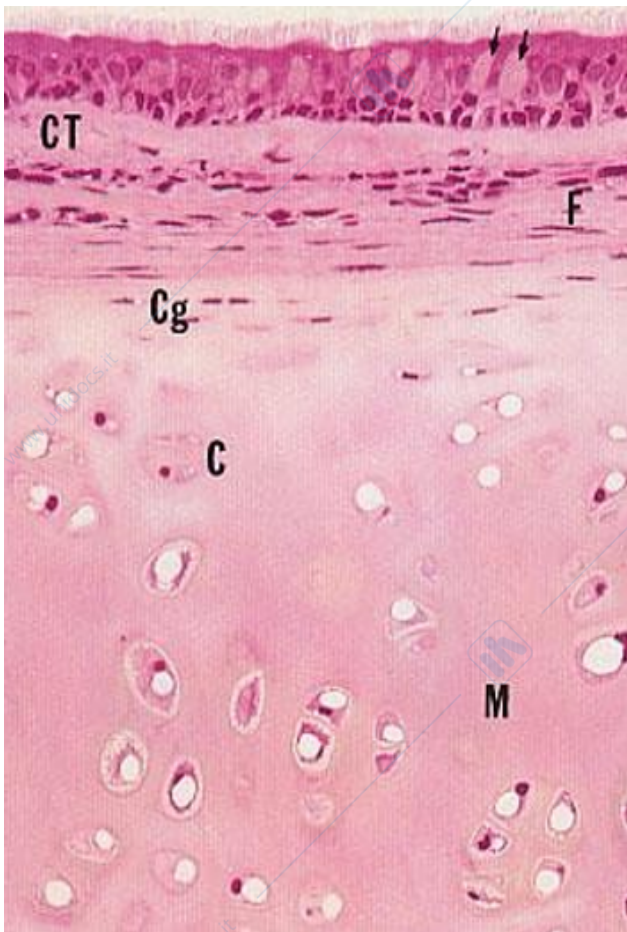
www.unidocs.it - Appunti e dispense per superare i tuoi esami universitari

www.unidocs.it - Appunti e dispense per superare i tuoi esami universitari

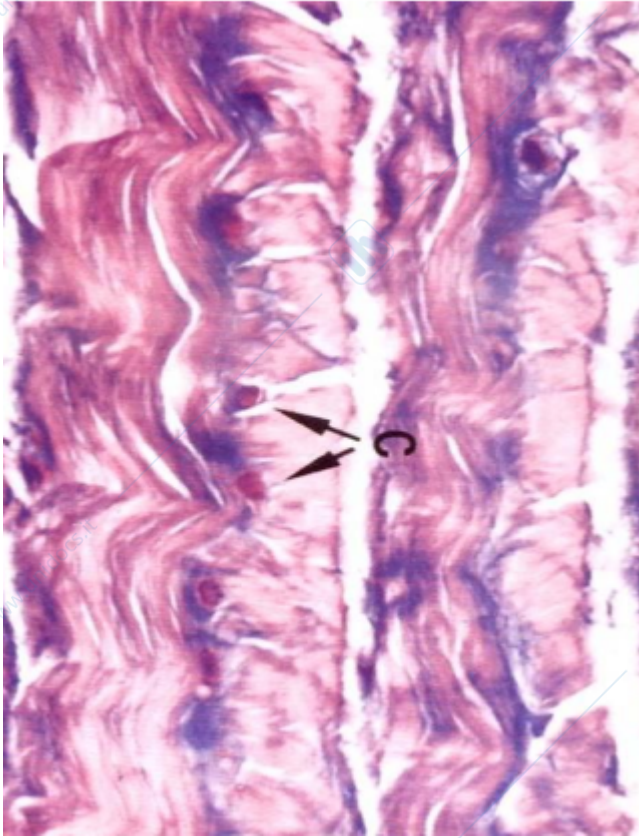




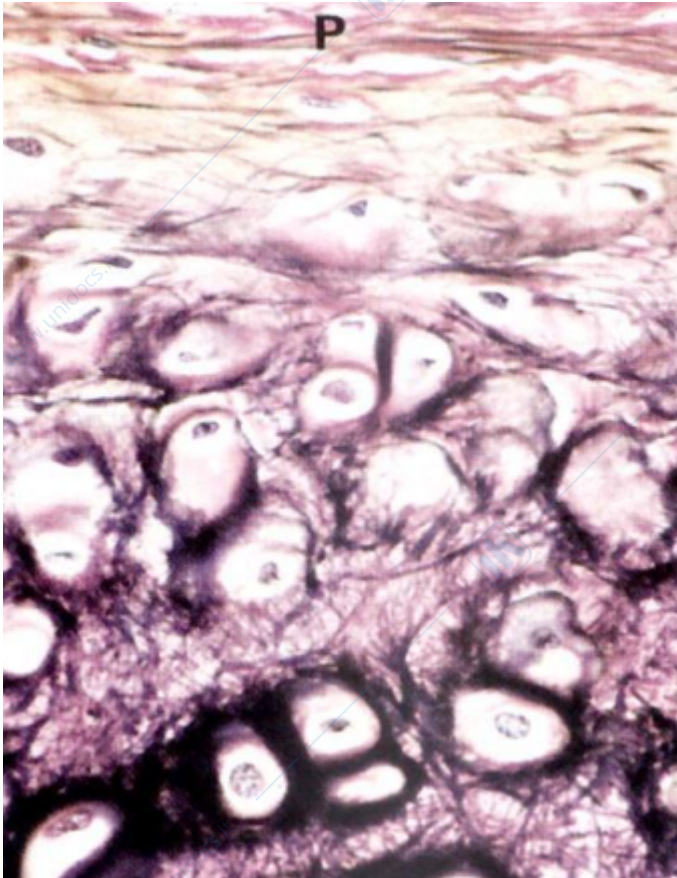
CARTILAGINE IALINA



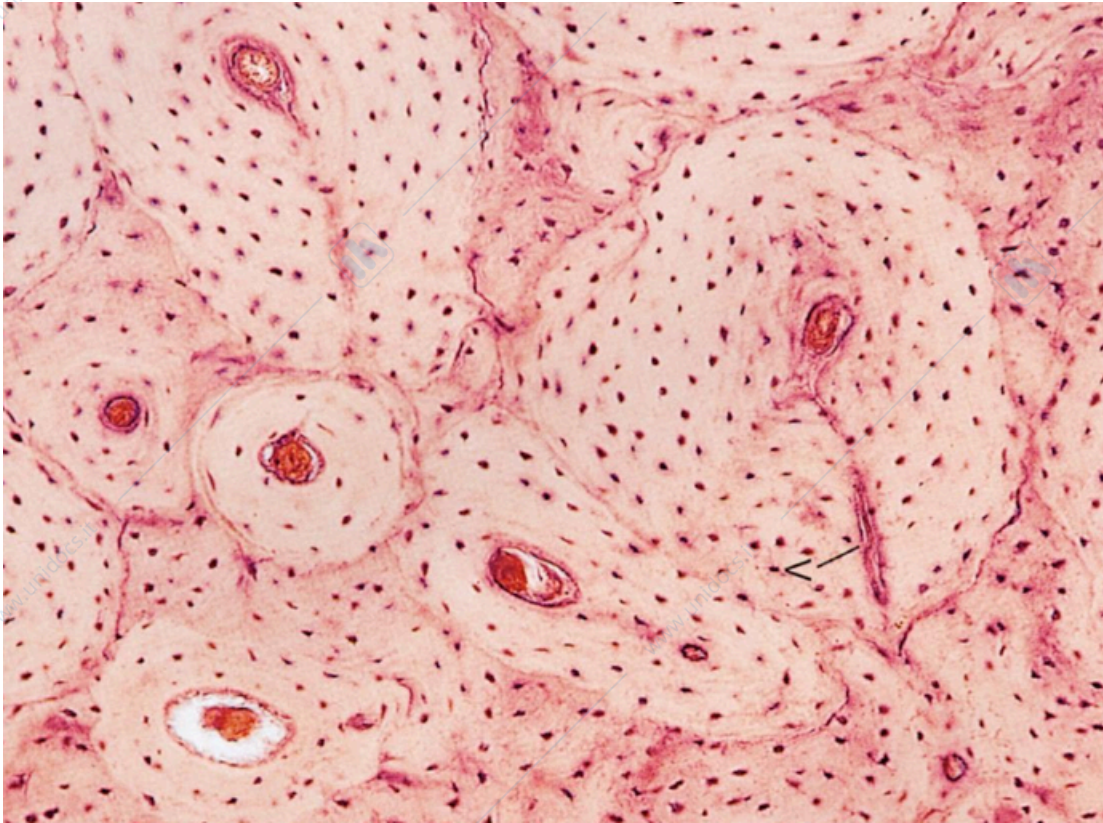
CARTILAGINE FIBROSA



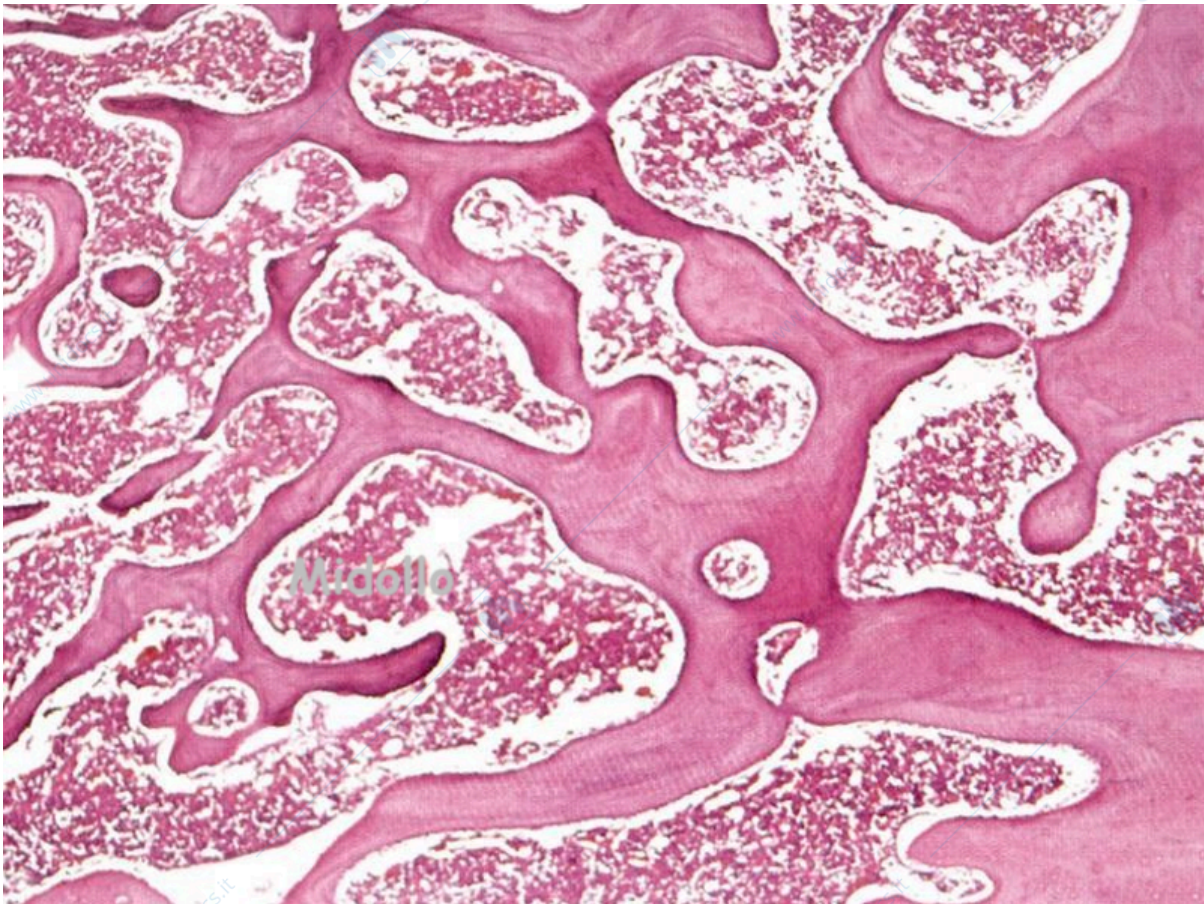
CARTILAGINE ELASTICA



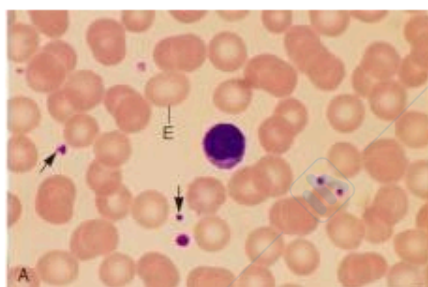
TESSUTO OSSEO COMPATTO LAMELLARE



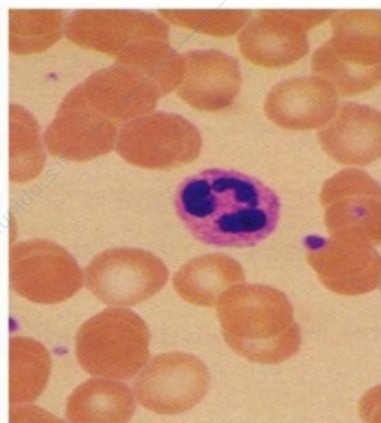
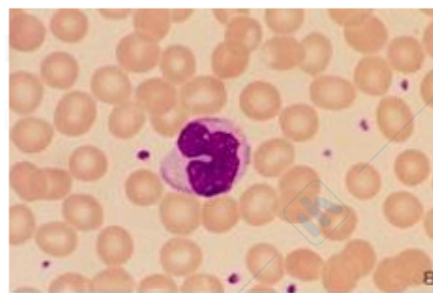
TESSUTO OSSEO SPUGNOSO



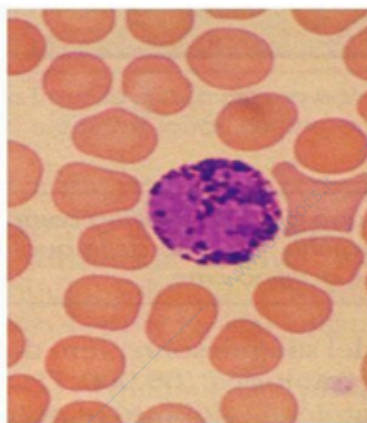
Linfocita



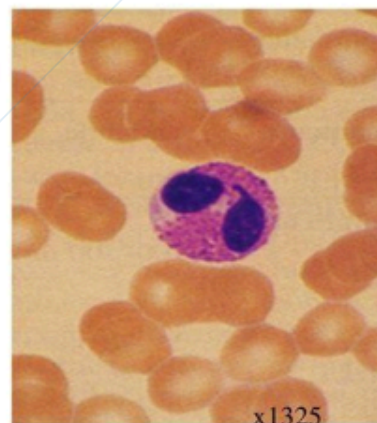
Monocita



neutrofilo

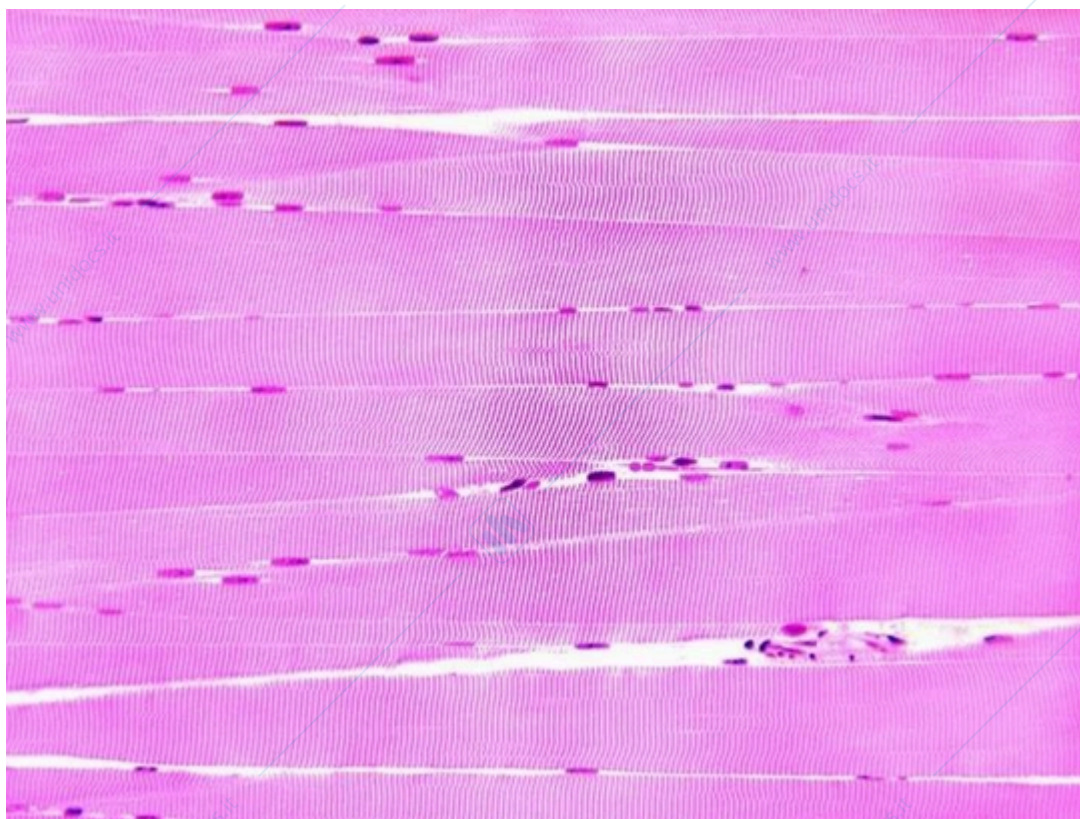


basofilo

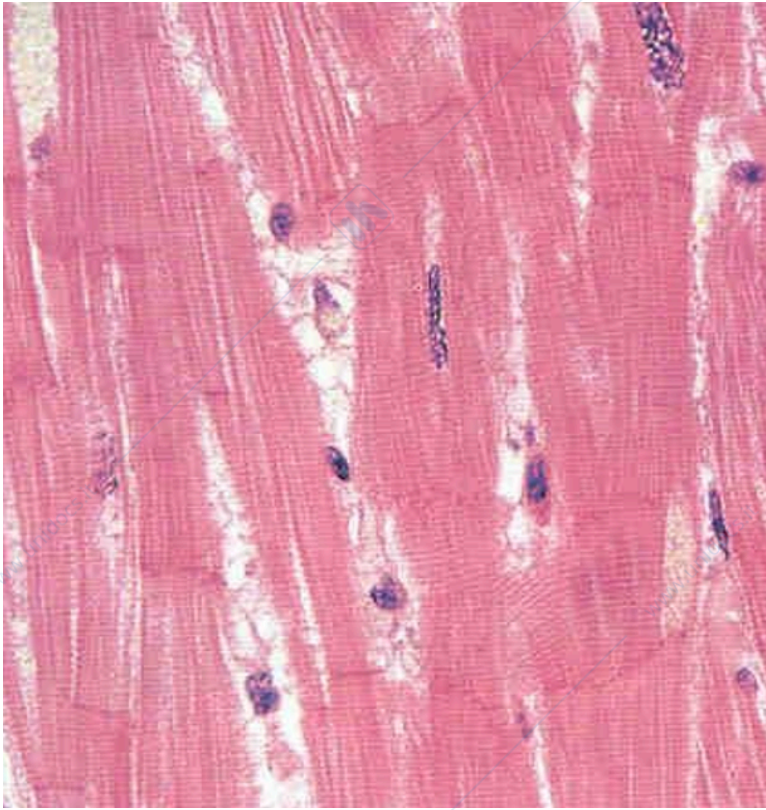


eosinofilo

TESSUTO MUSCOLARE STRIATO SCHELETRICO



TESSUTO MUSCOLARE STRIATO CARDIACO



TESSUTO MUSCOLARE LISCIO

