

ITTERI OSTRUTTIVI

Itteri meccanici
Itteri chirurgici

DIAGNOSI

- Anamnesi
- Esame clinico
- Esami di laboratorio
- Esami radiologici e strumentali

Anamnesi

- Da quanto tempo?
- Quali altri sintomi? : nausea, vomito, prurito?
- Febbre ?
- Ha notato cambiamenti nelle caratteristiche delle feci e delle urine?
- Ha avuto dolore?
- Ha notato cambiamenti nell'intensità dell'ittero?

ANAMNESI

CARATTERISTICHE

Del dolore

Dell'ittero

ANAMNESI

- **CARATTERISTICHE del dolore**
- *Assente*
- *Presente*
- *Gravativo*
- *Colico*
- *Comparso contemporaneamente all' ittero*

ESAME CLINICO

- Colore sclere e cute
- Lesioni cutanee
- Bradicardia
- Es. obiettivo addome
(Courvasier)

ESAMI DI LABORATORIO

- Bilirubinemia
- Fosfatasi alcalina
- Gamma-gt
- Azotemia
- Creatininemia
- Es. urine
- Markers tumorali

MARKERS TUMORALI

- TPA
- Ca 19-9
- Ca 125
- CEA
- AFP

ESAMI RADIOLOGICI E STRUMENTALI

- Ecografia
- Colangio-RM (colangiografia E.V.)
- TAC
- ERCP
- Colangiografia trans-parieto epatica
- (Duodenografia ipotonica – Scintigrafia - Rx torace)

ITTERI MECCANICI

- Da compressione estrinseca
- Da compressione intrinseca
- Da ostruzione

-
- NEOPLASTICI
 - NON NEOPLASTICI

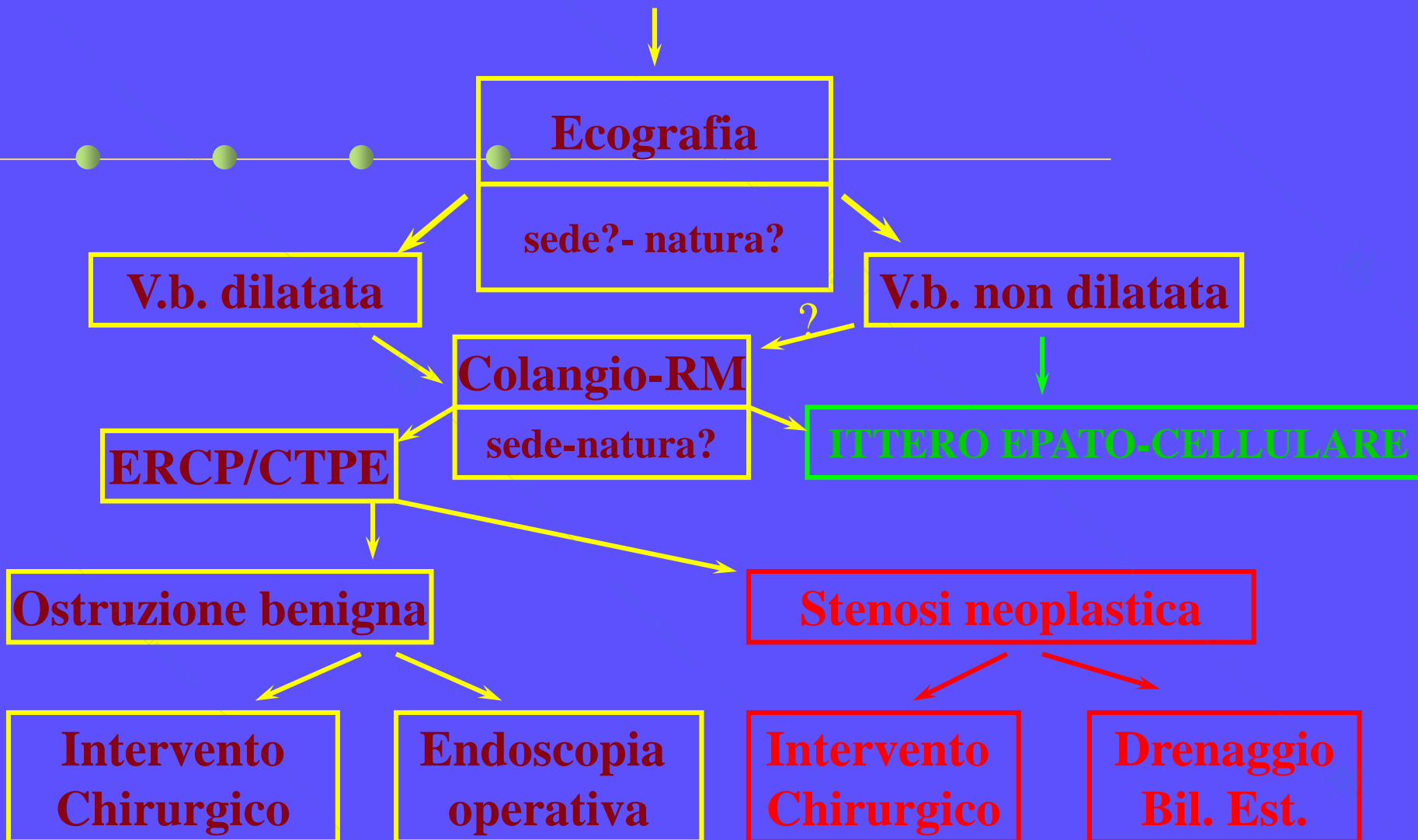
ITTERI NON NEOPLASTICI

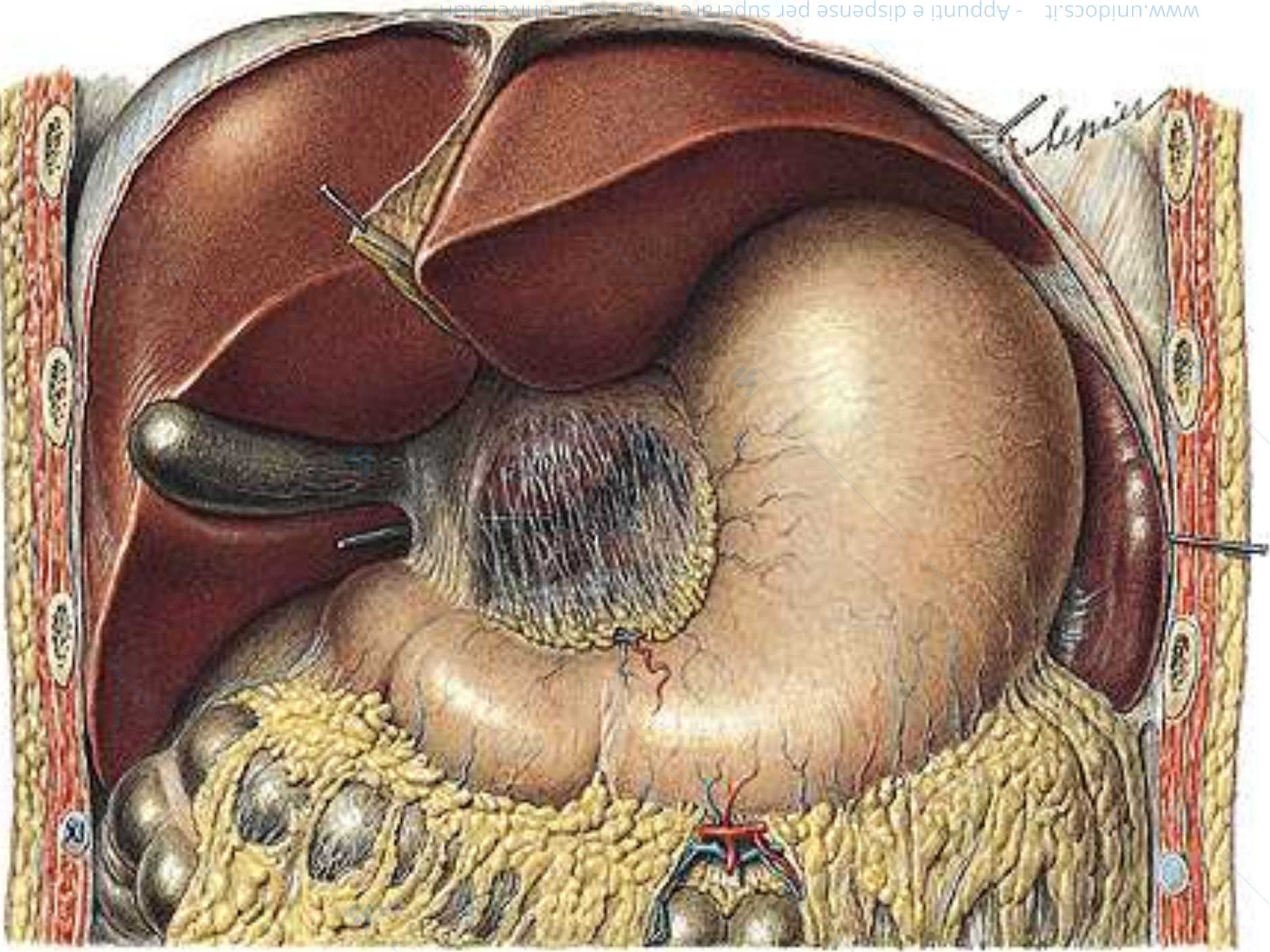
- Calcolosi
- Stenosi infiammatorie
 - colangiti
 - odditi
- Compressioni estrinseche
- Iatrogenici
- Parassitosi
- (Malformazioni congenite)

ITTERI NEOPLASTICI

- Testa del pancreas
- Papilla
- Epato-coledoco
- Generalizzato V.B.P.
- Epatoma
- Metastasi epatiche
- Compressione-invasione di organi vicini

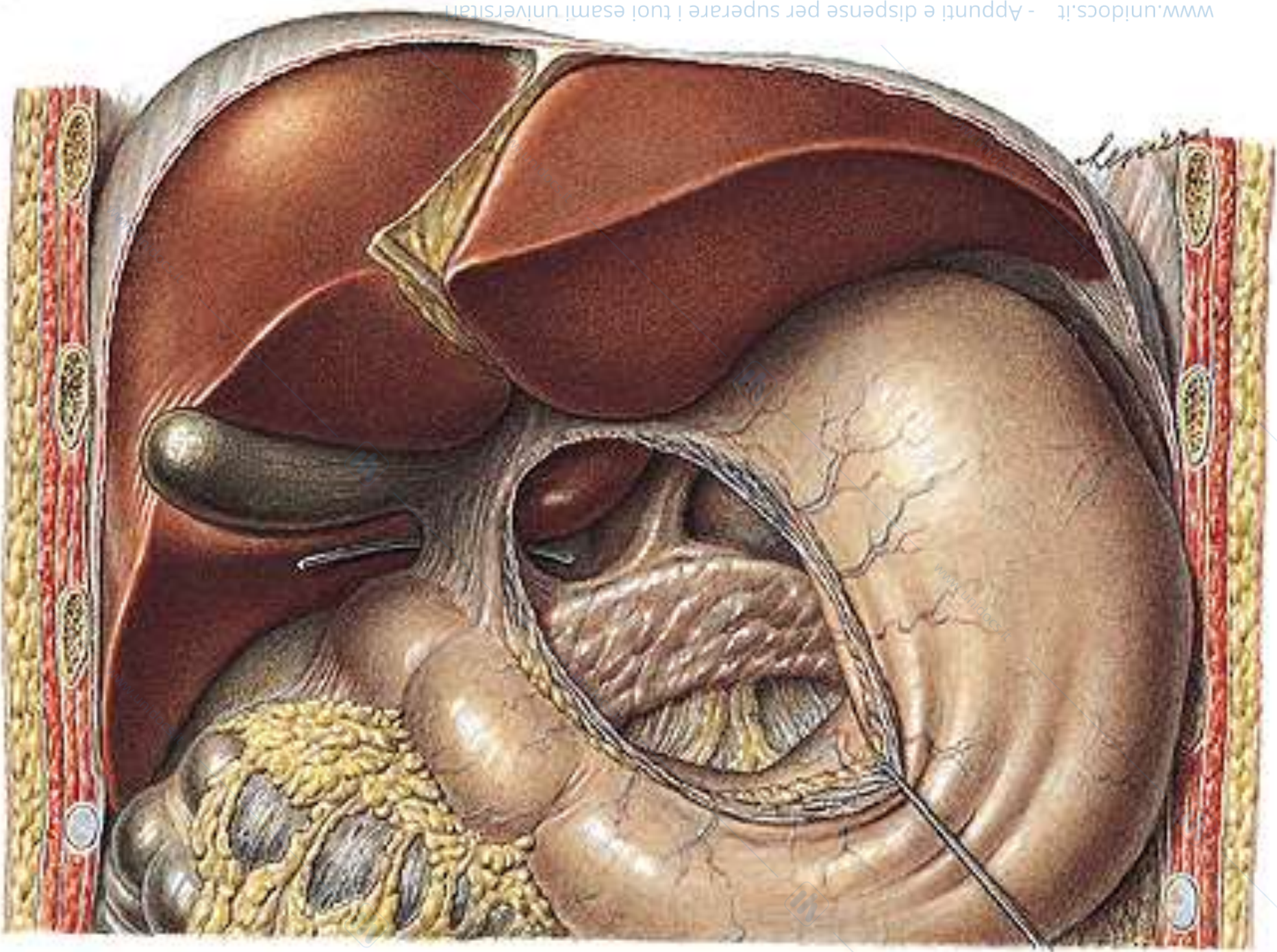
ITTERO





www.unidocs.it - Appunti e dispense per superare i tuoi esami universitari

www.unidocs.it - Appunti e dispense per superare i tuoi esami universitari



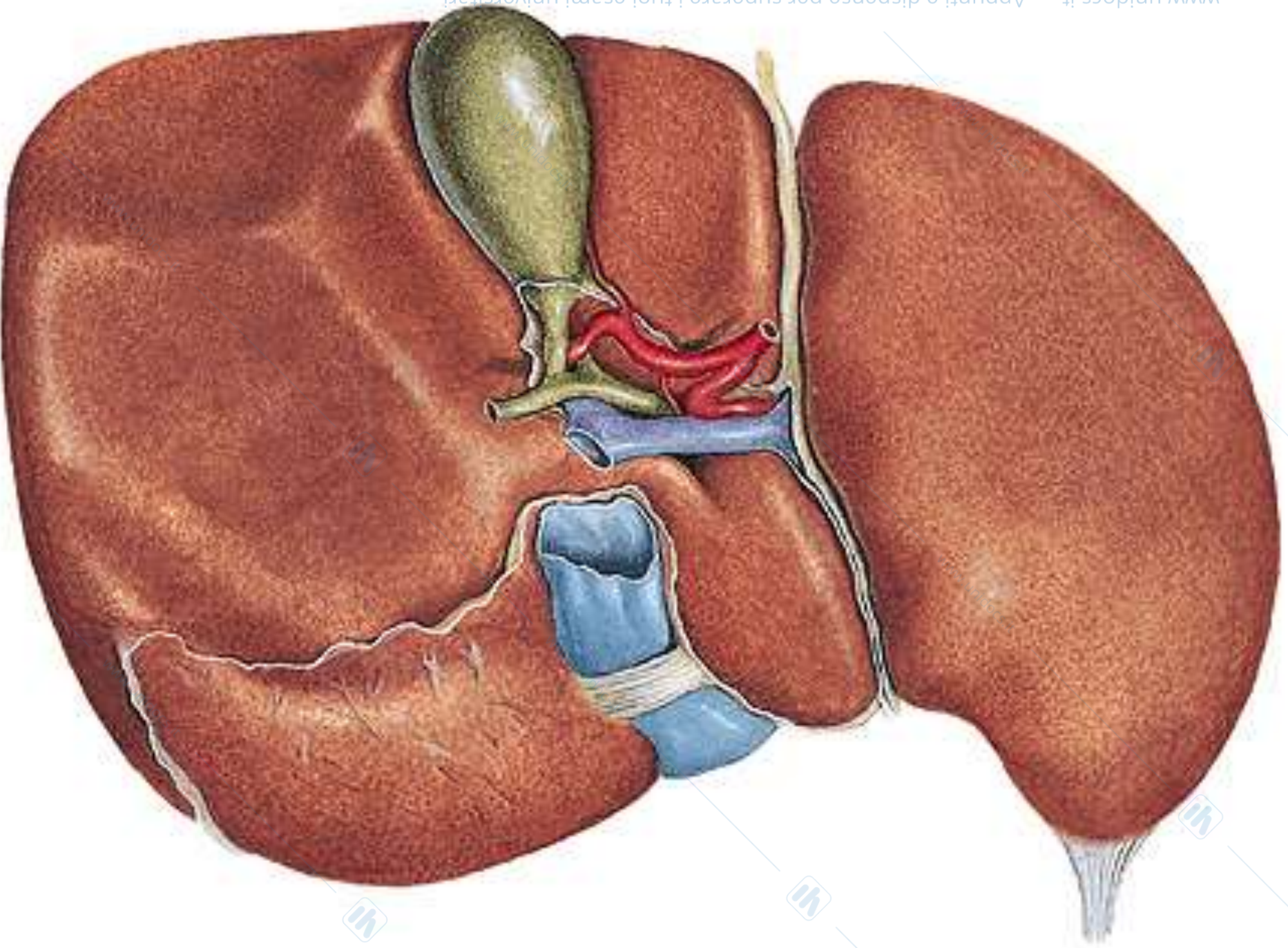
www.unidocs.it - Appunti e dispense per superare i tuoi esami universitari

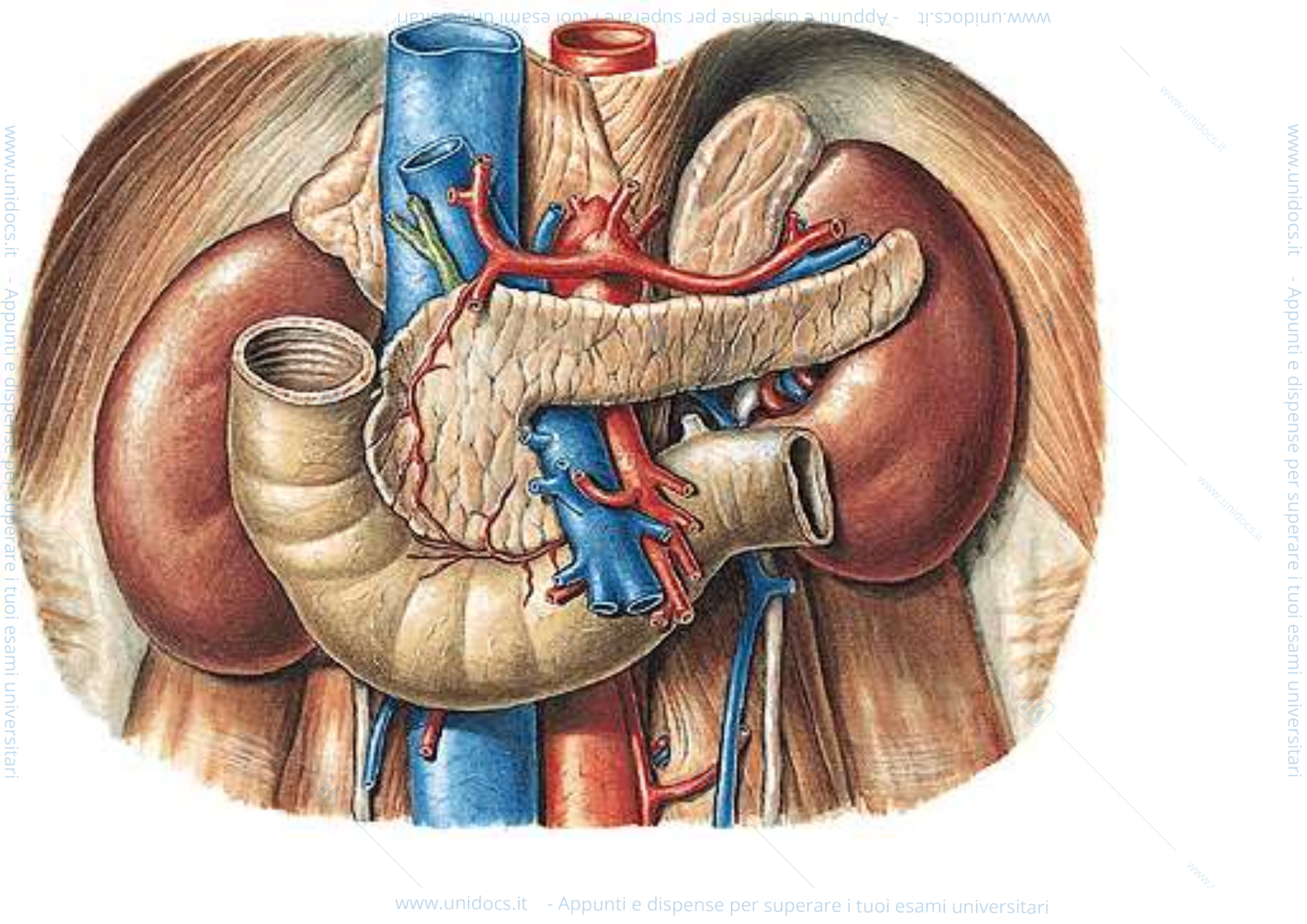
www.unidocs.it - Appunti e dispense per superare i tuoi esami universitari

www.unidocs.it

www.unidocs.it

www.u

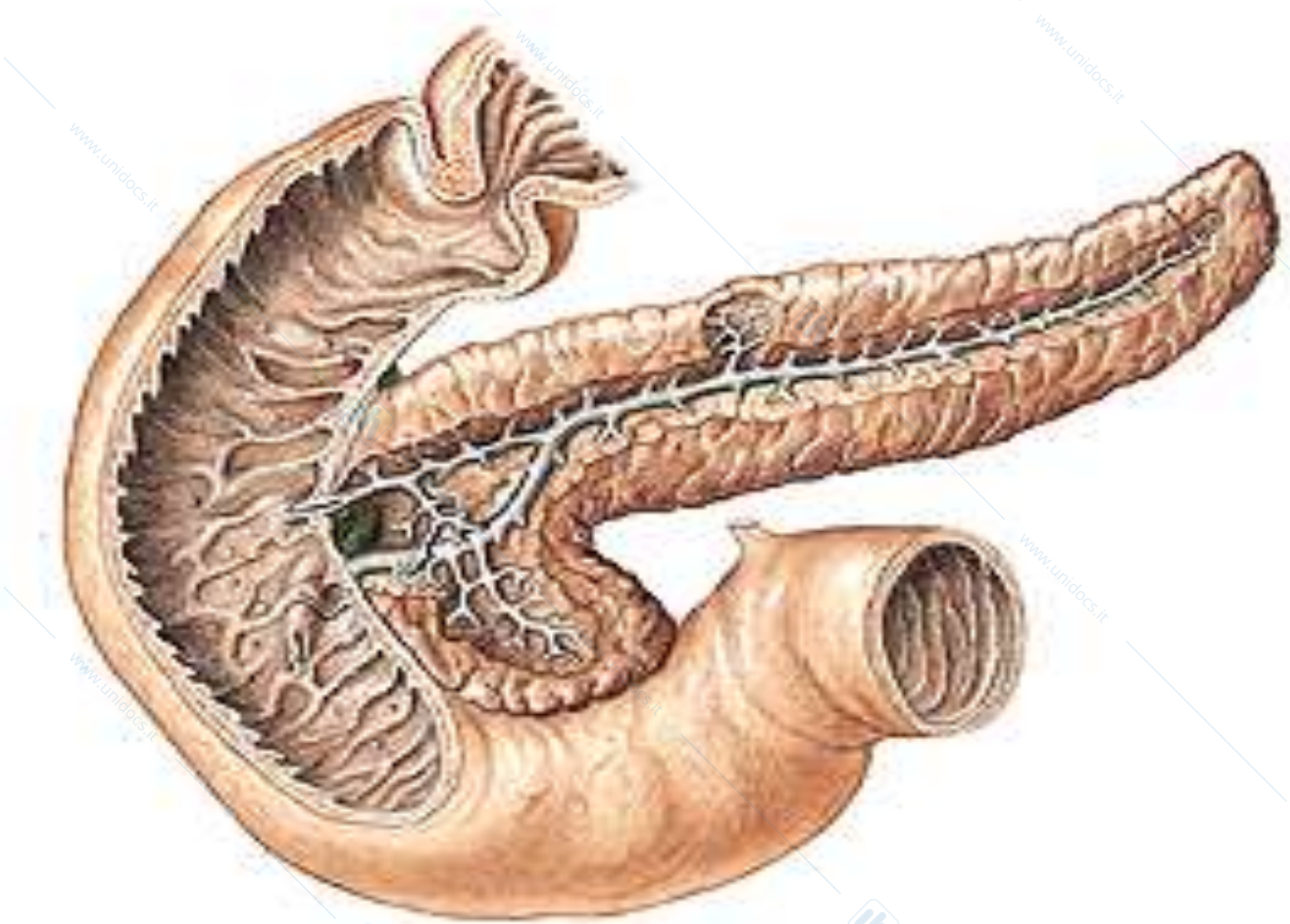


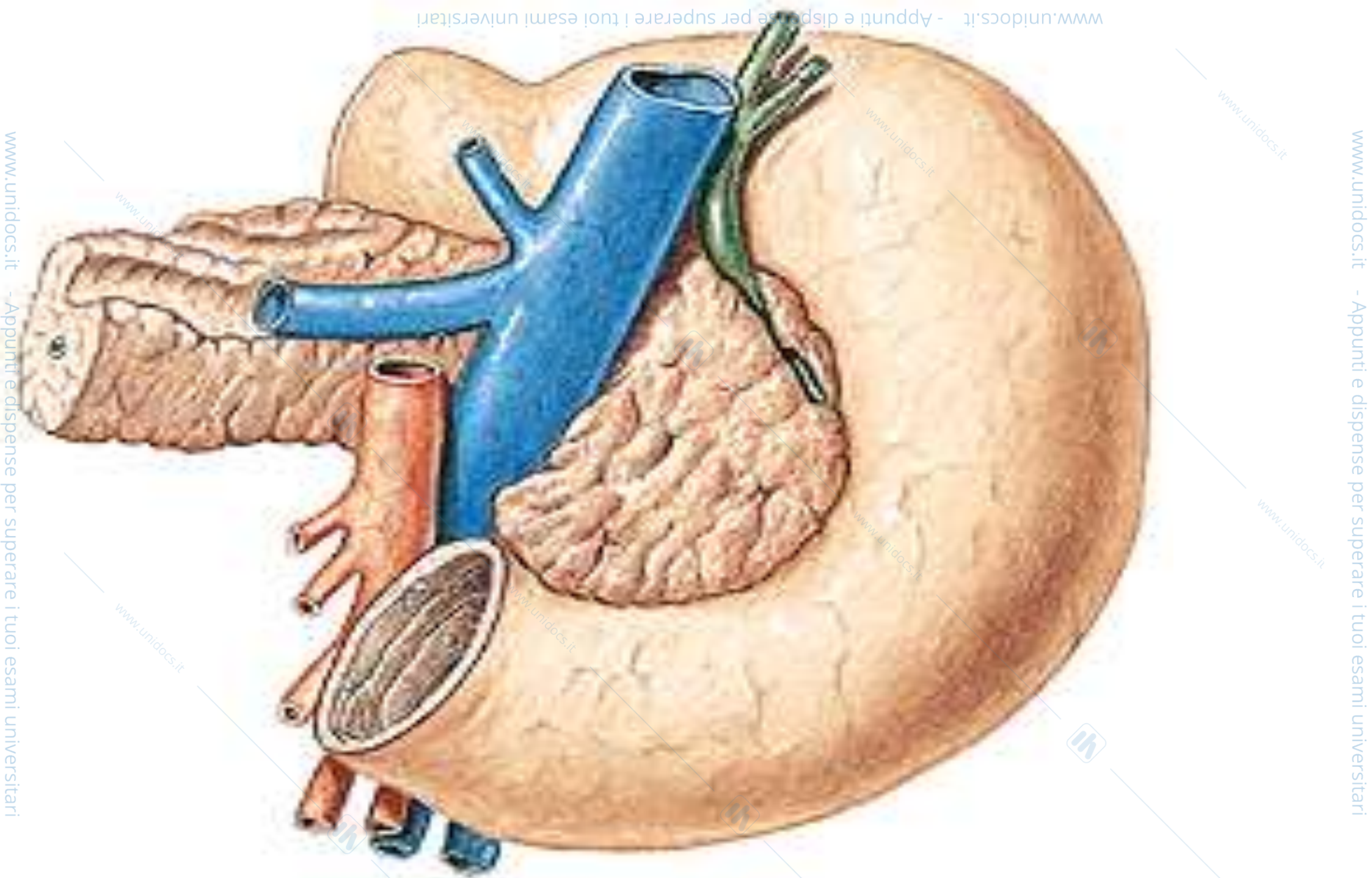


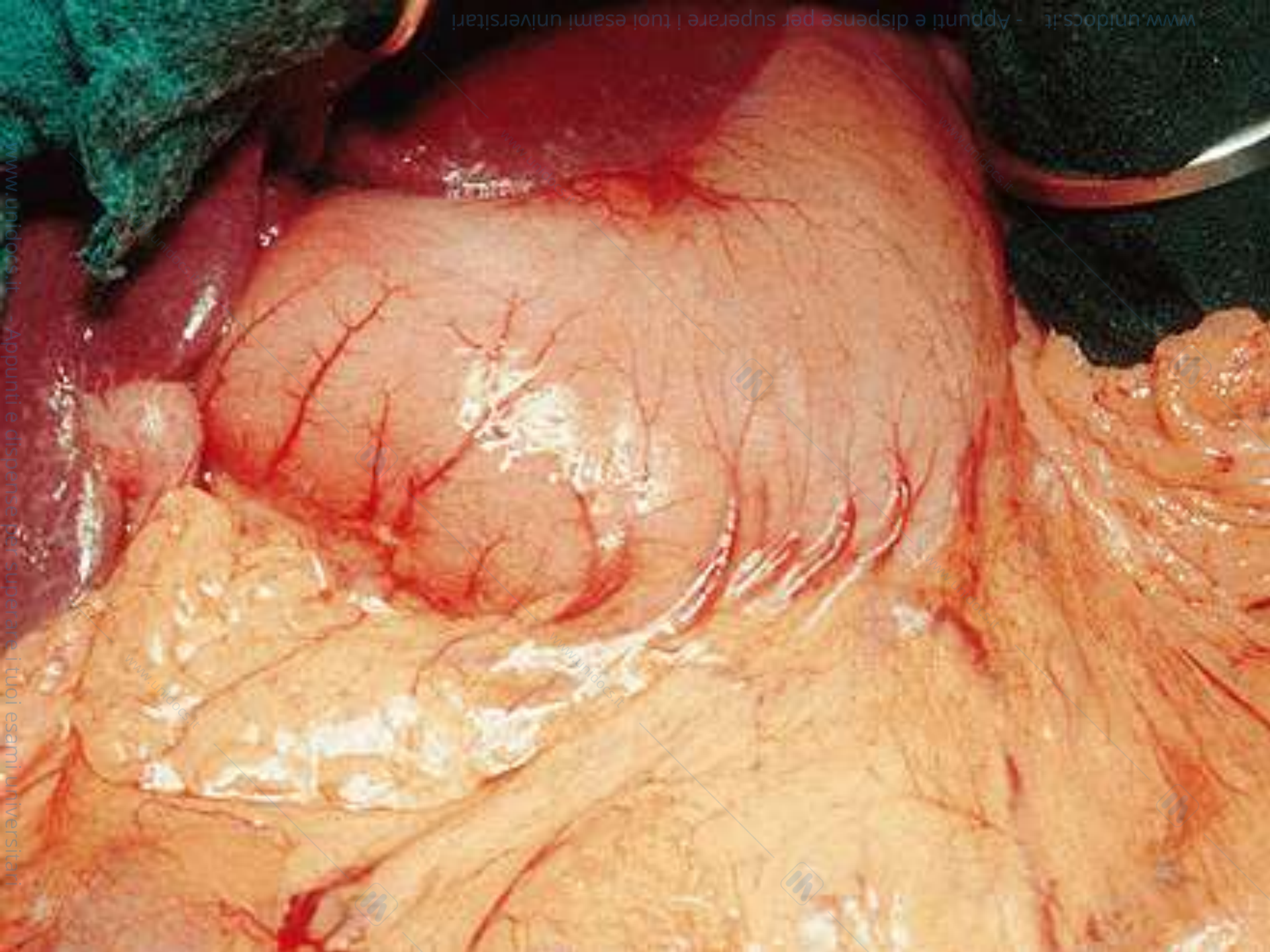
www.unidocs.it - Appunti e dispense per superare i tuoi esami universitari

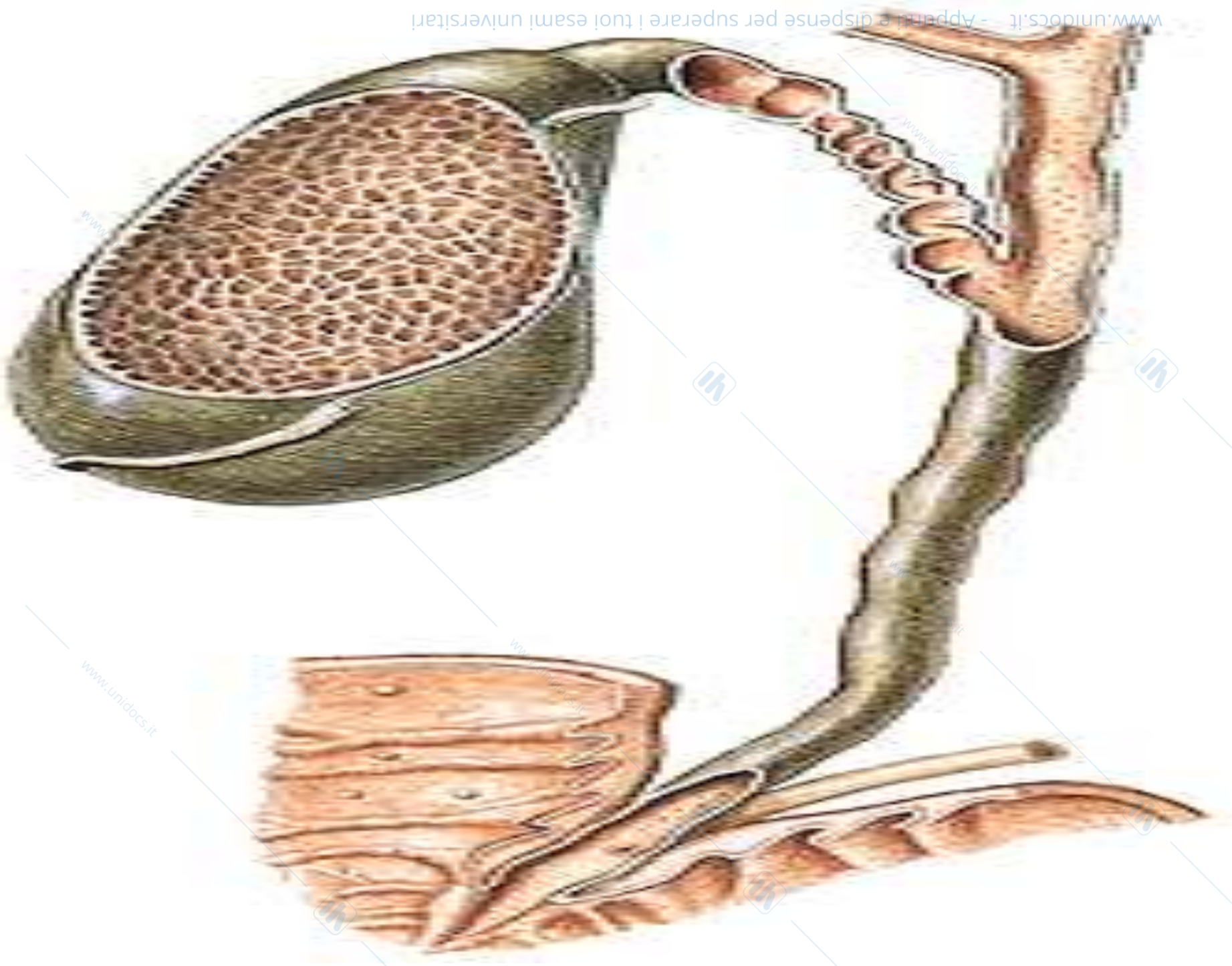
www.unidocs.it - Appunti e dispense per superare i tuoi esami universitari

www.unidocs.it - Appunti e dispense per superare i tuoi esami universitari





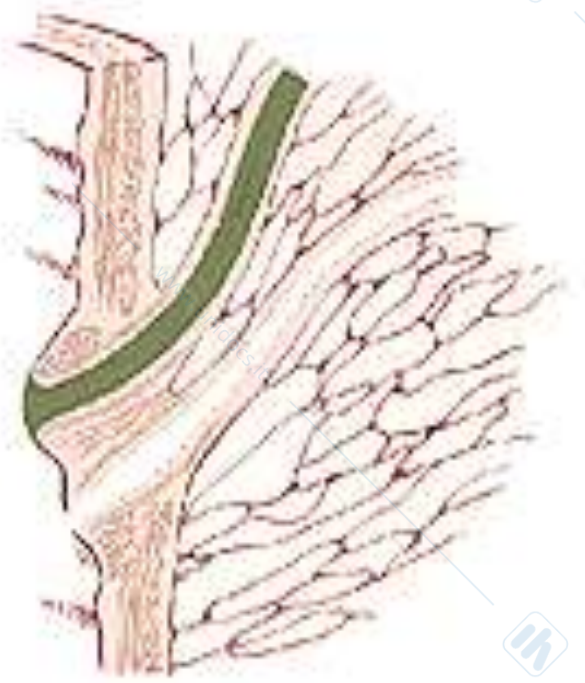
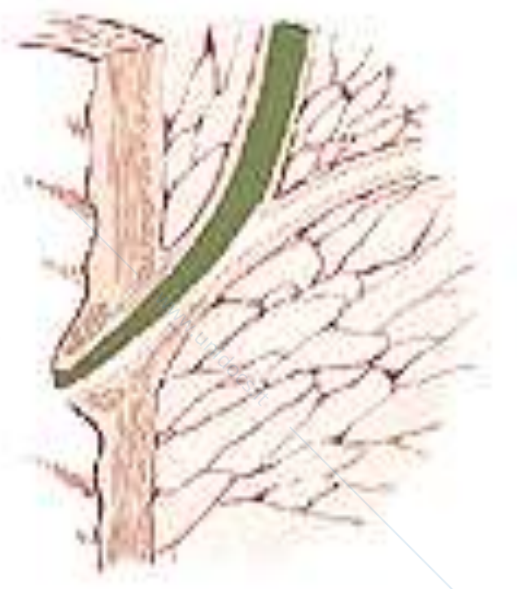
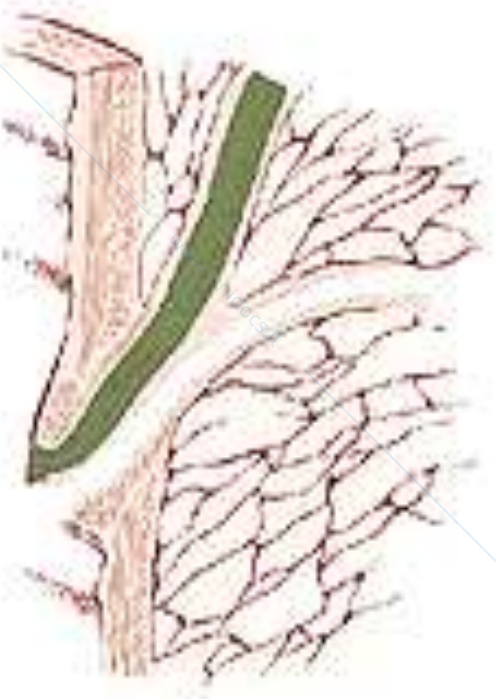
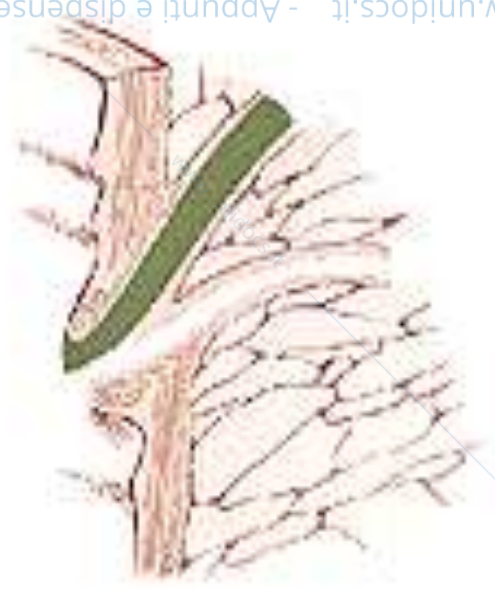


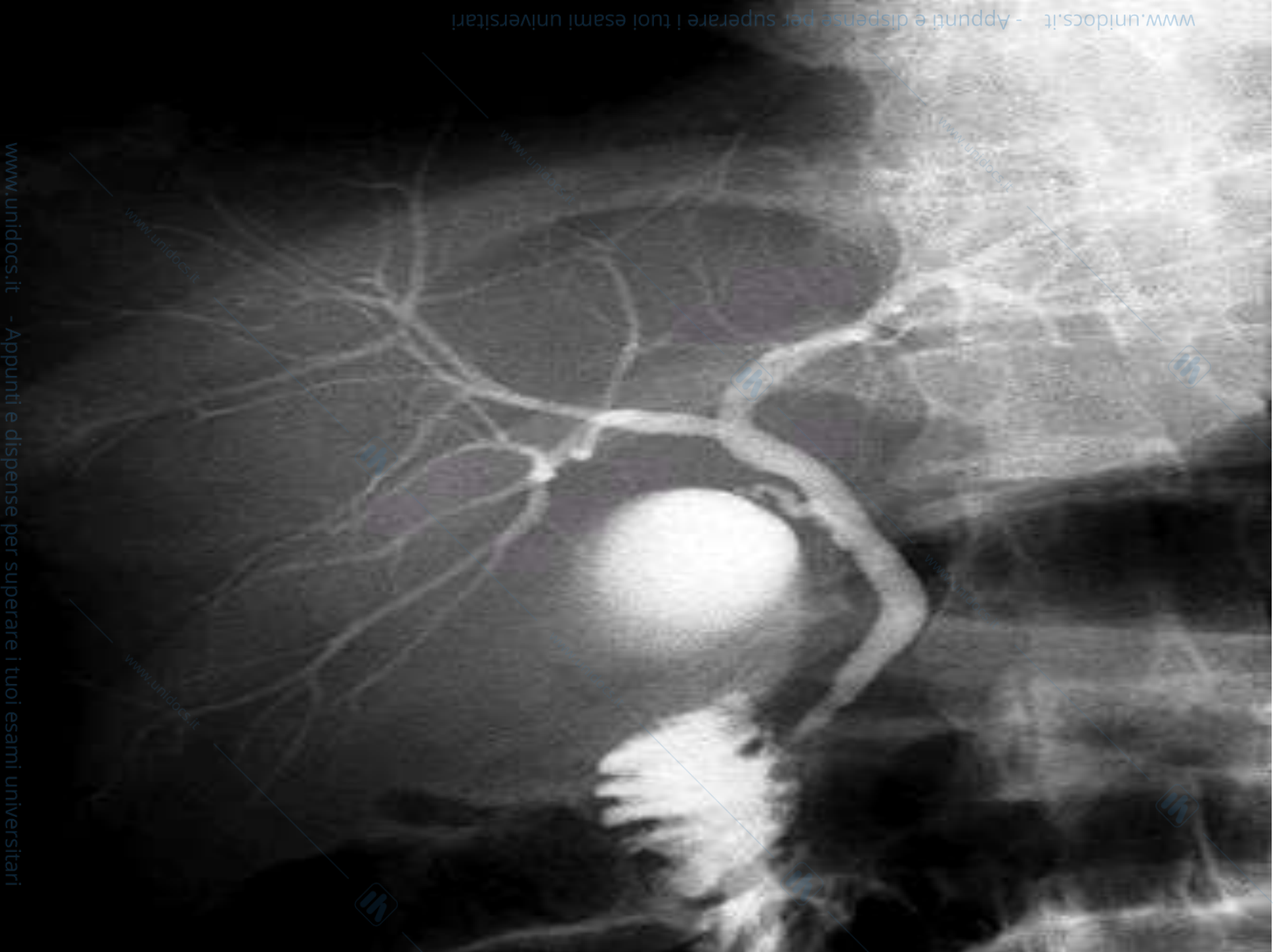


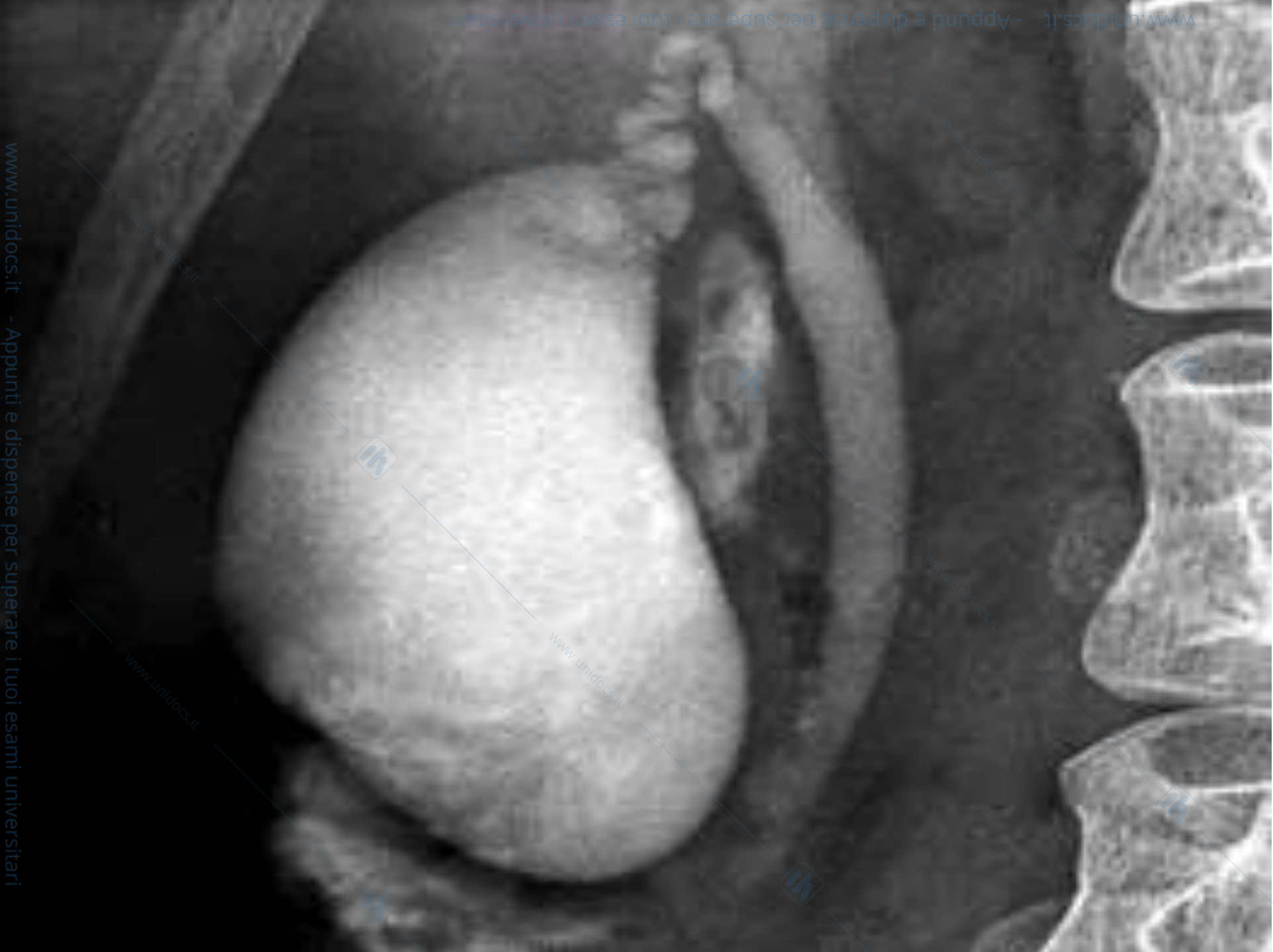
www.unidocs.it

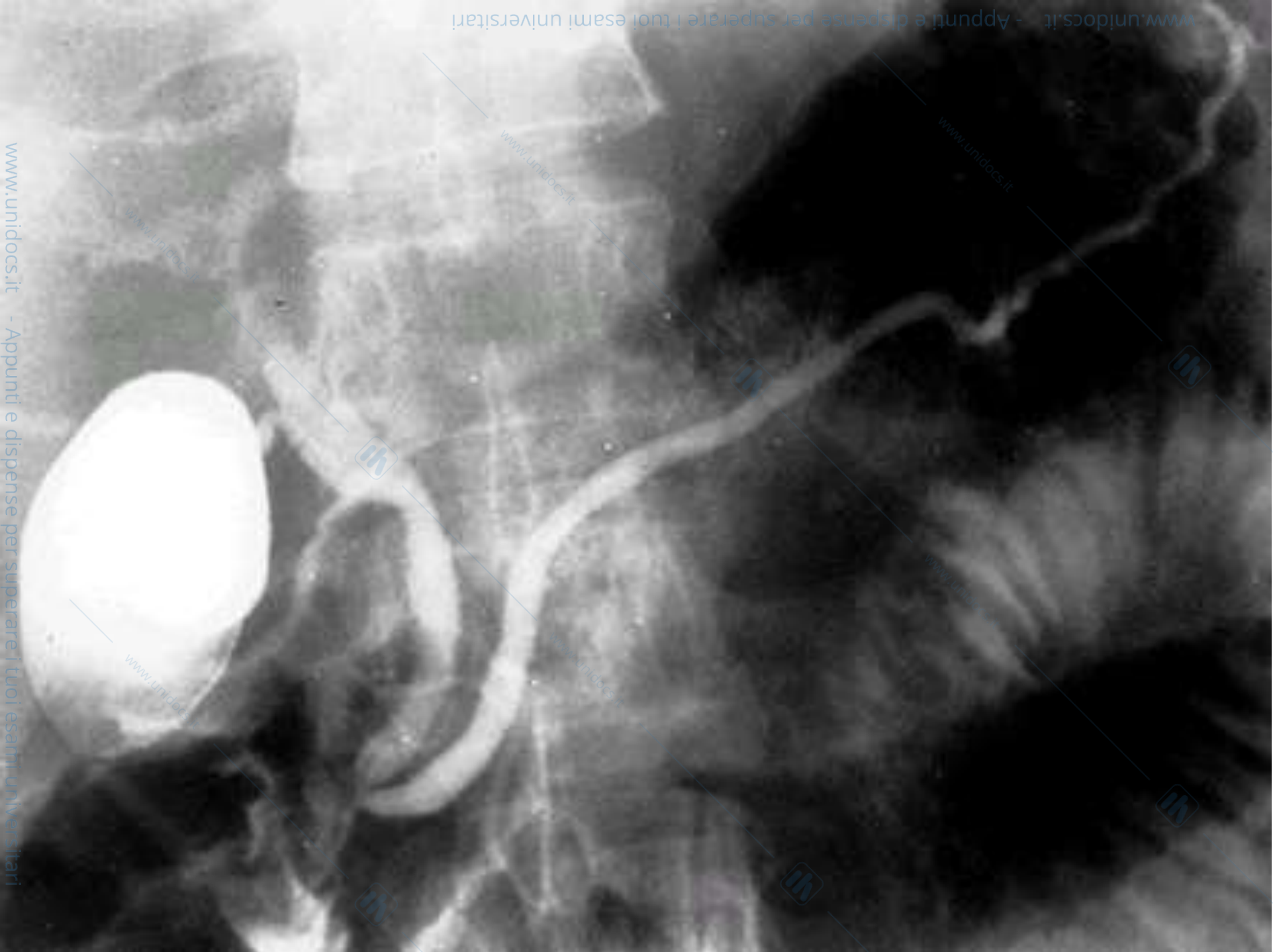
www.unidocs.it

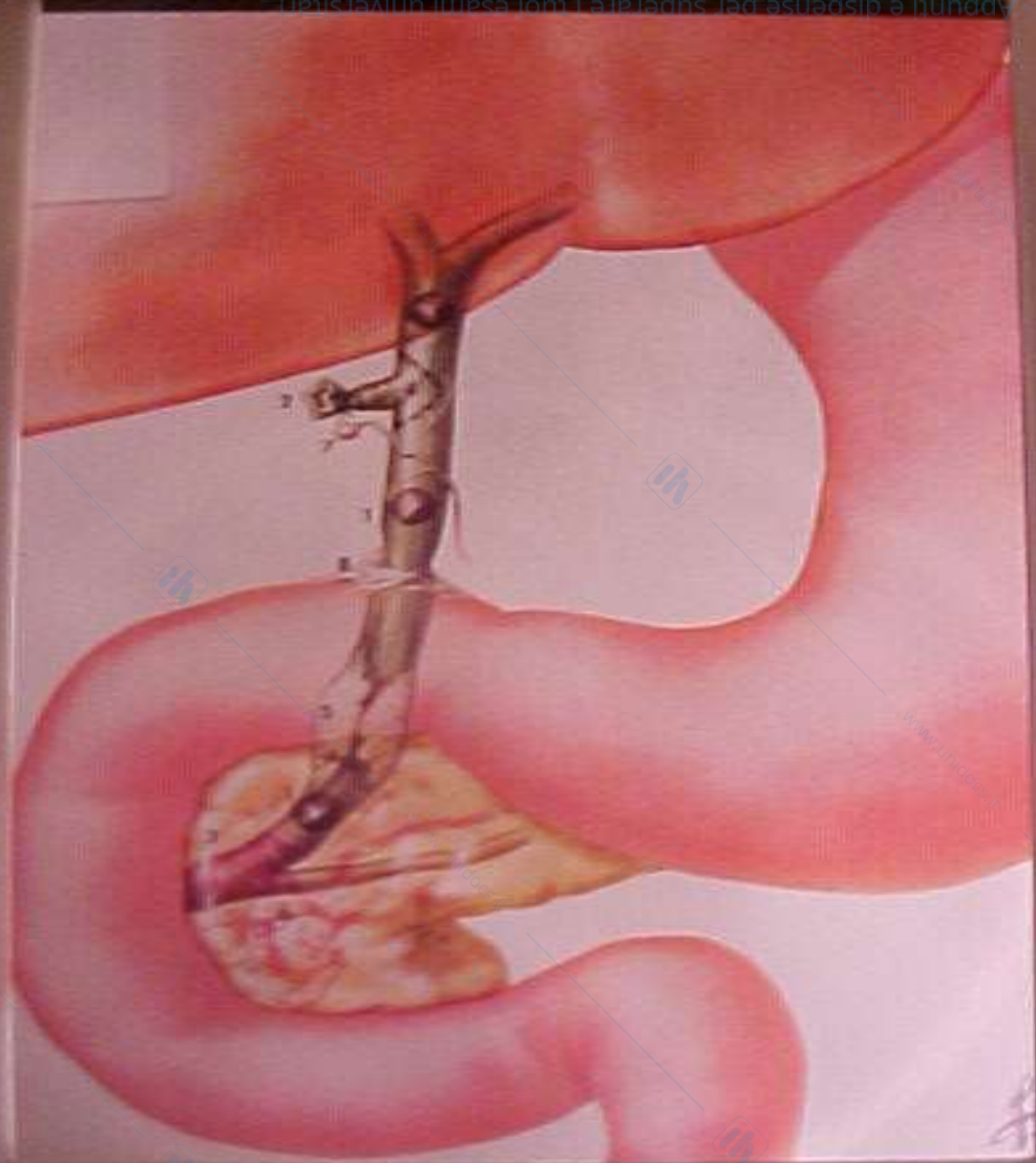
www.j

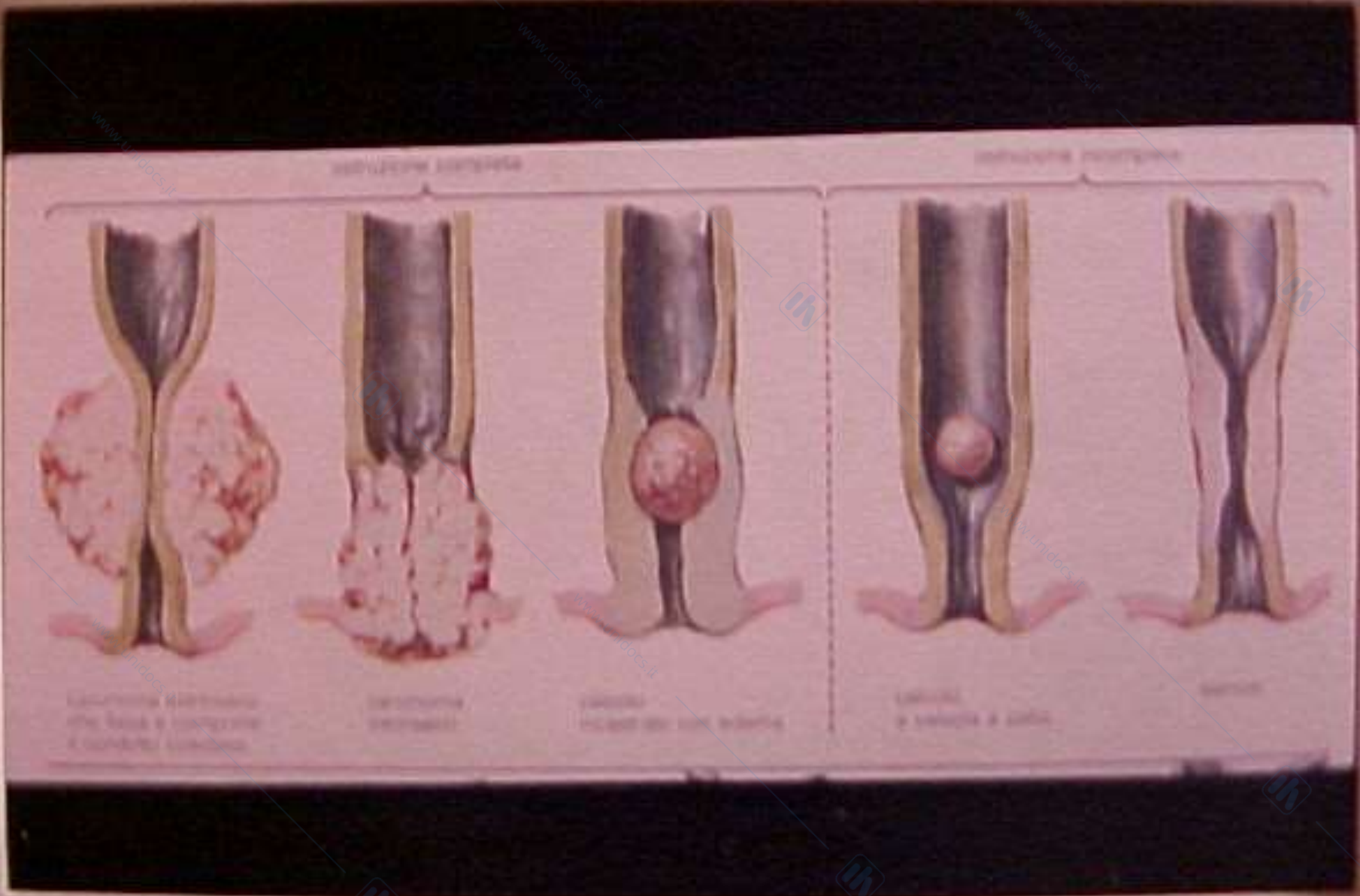




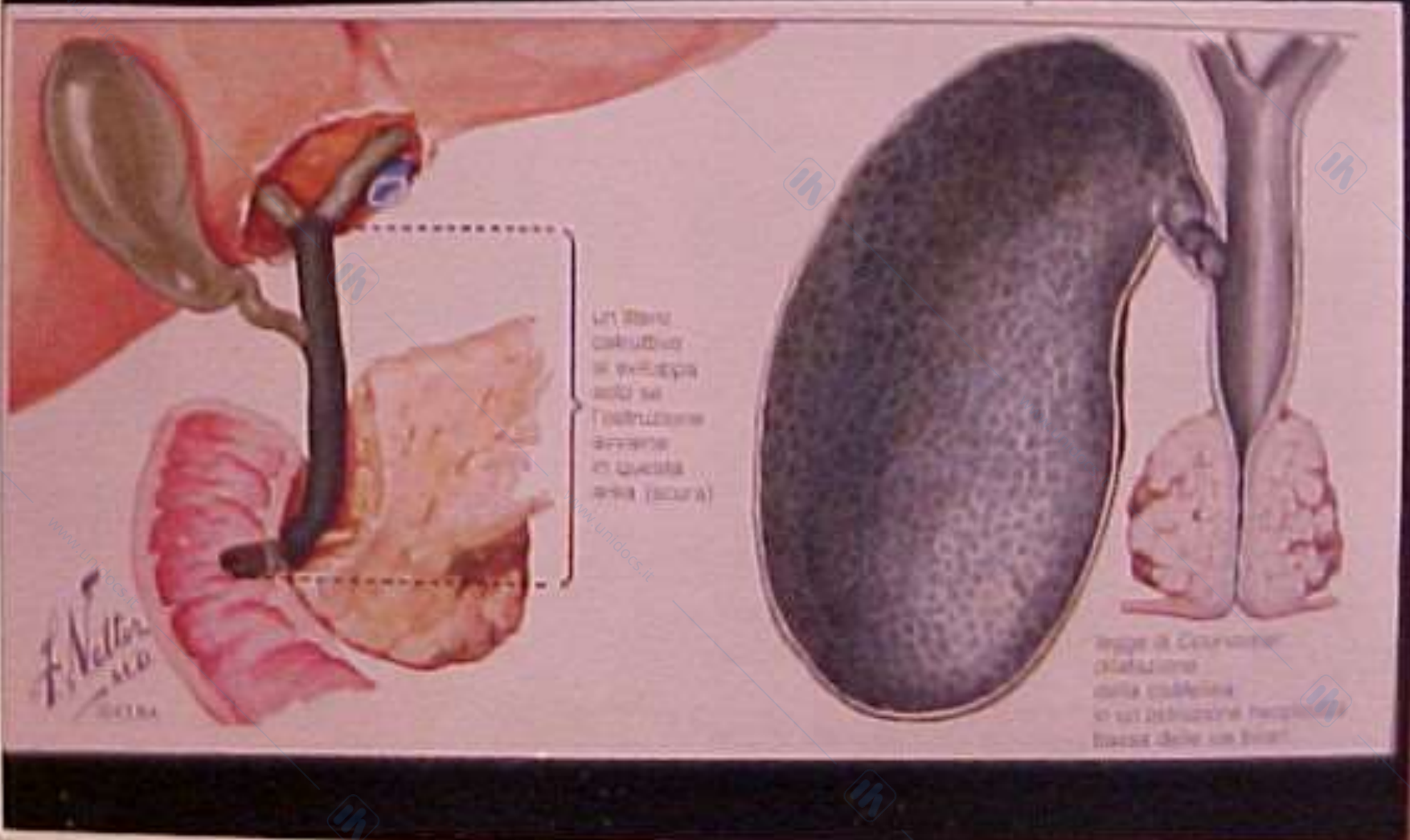






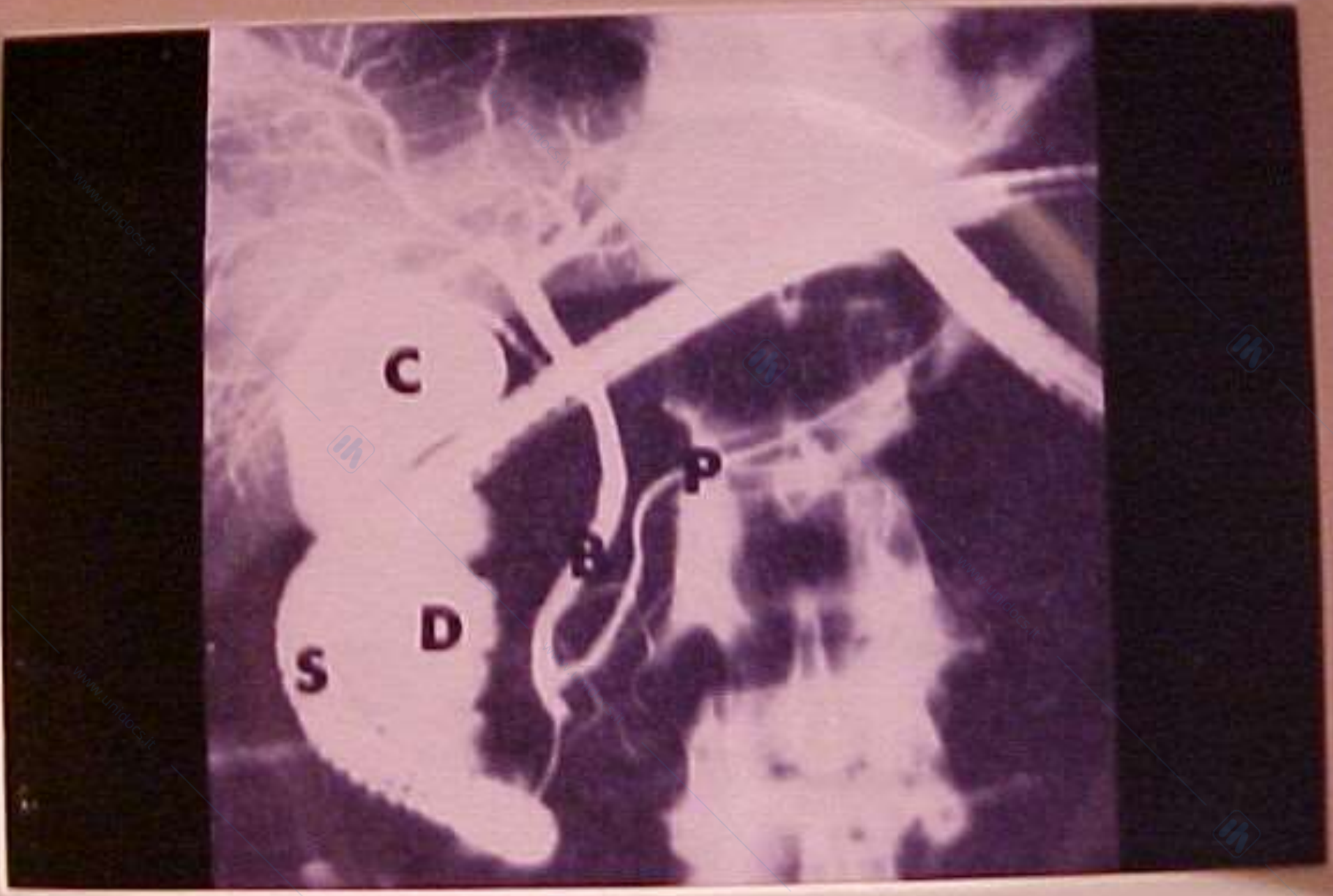






Un organo
castrato
in sviluppo
dalla
Tiroide
della
cervice
(SPLINA)

Organo di Circolazione
della linfa
e del sangue
nella
distribuzione
pancreatica
della linfa





Porto - 1910
Eco = colle. colod.





Colaggio Inters
Impie strumento dell. V.R.

28

tel. 091-40 91 36

NAPOLI



Coleolosi V.B.

Colempio X Venam



colle. colodoco
colupio x venus

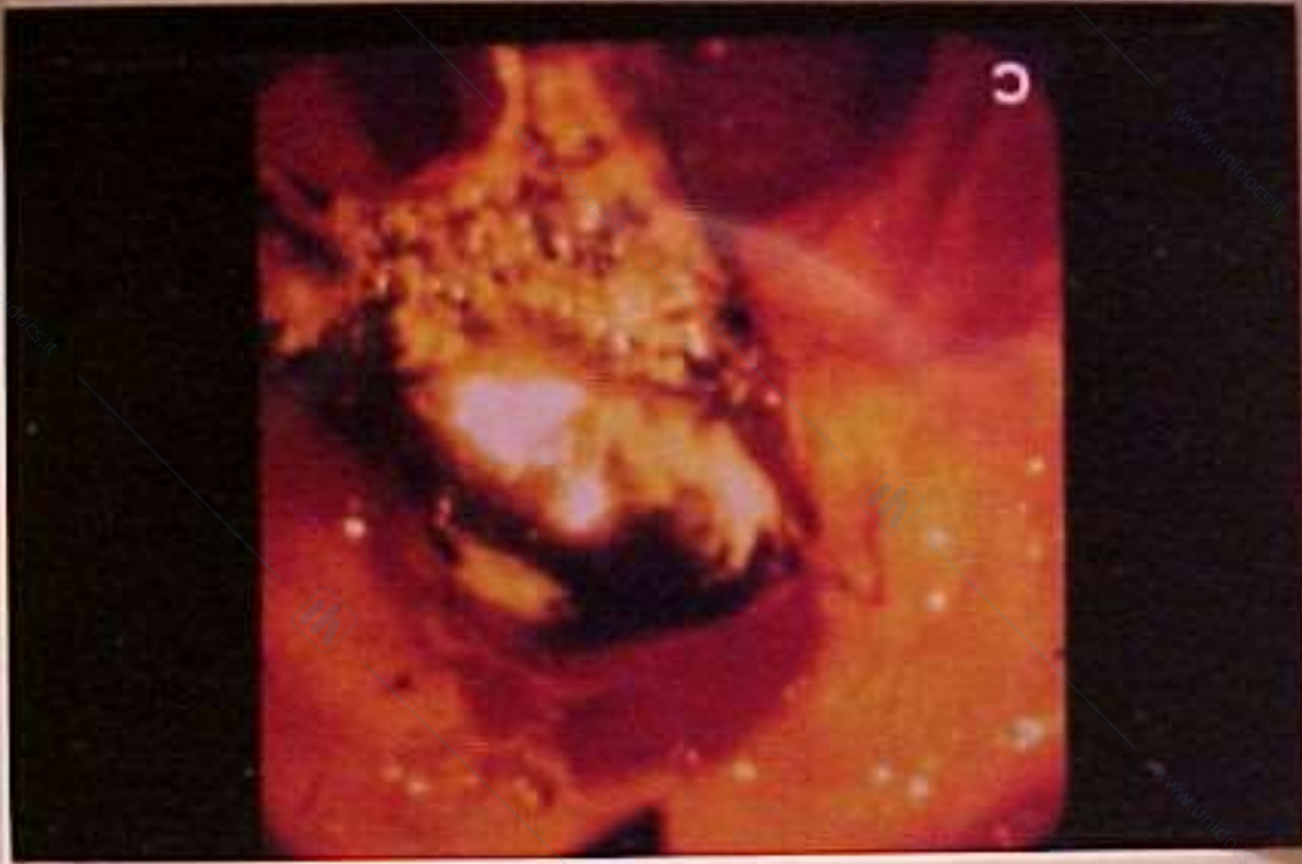


EREF

Calecoli

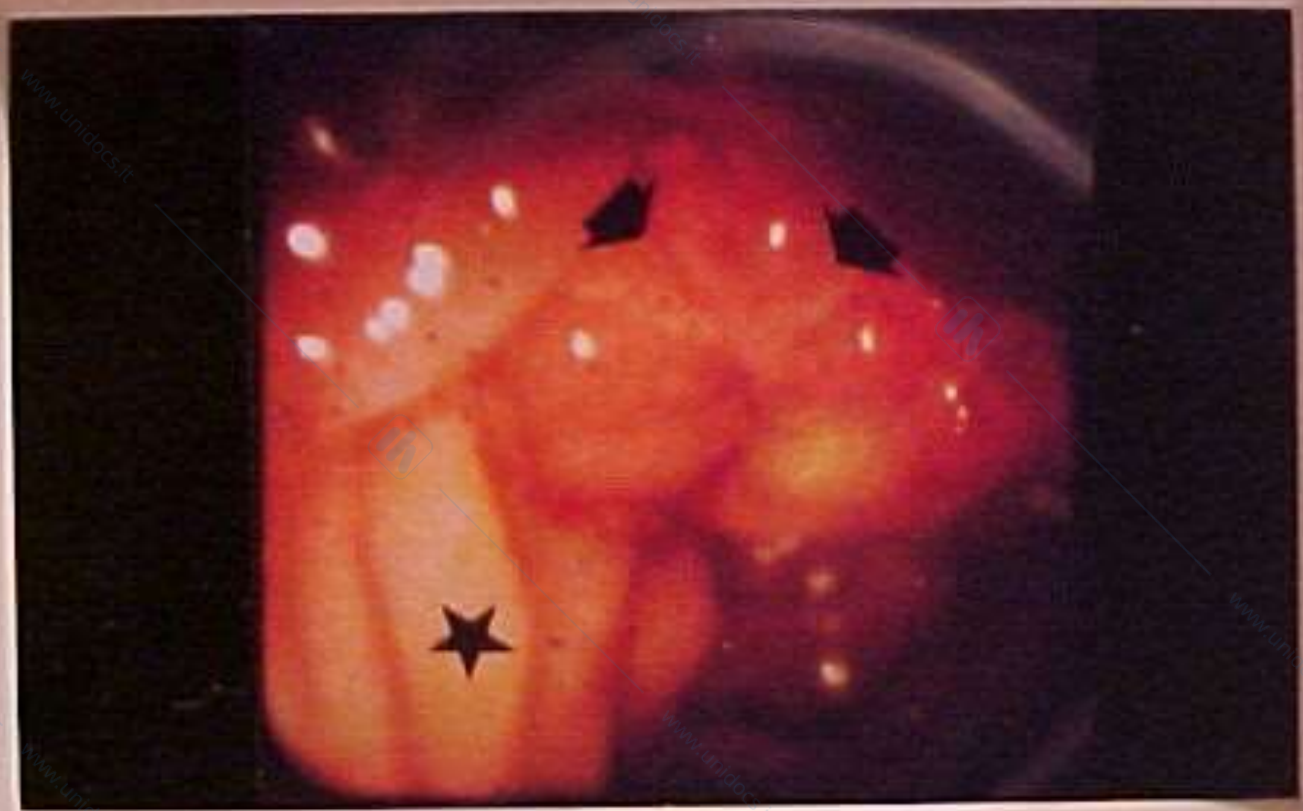


Papillotomia
Endoscopica



Colico affiorante
dalla papilla duodenale



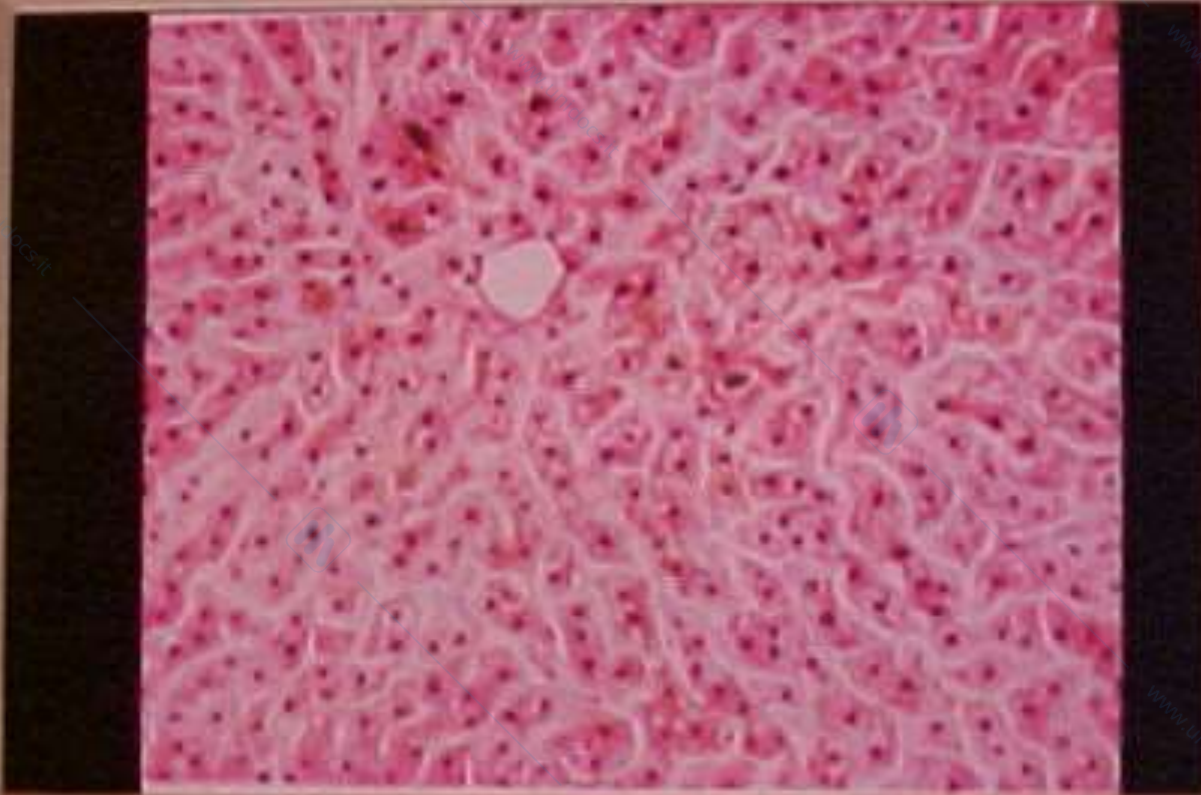


Endoscopia
K stenosante Papilla

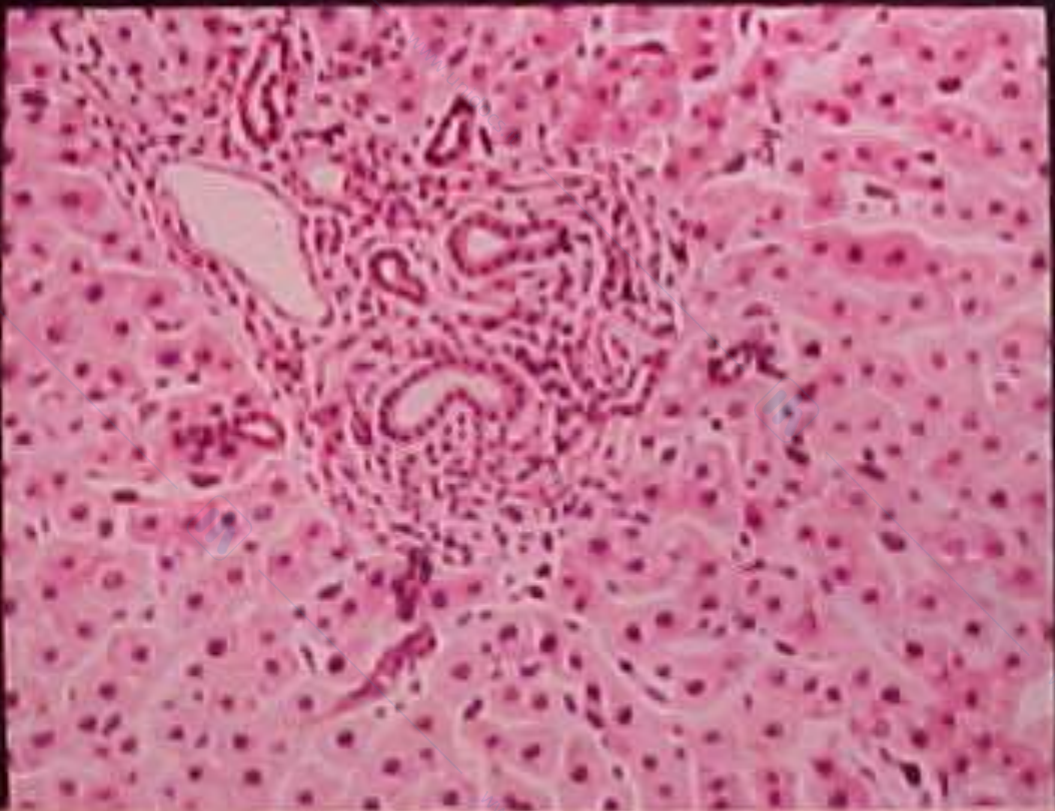
TERAPIA

OBIETTIVO:

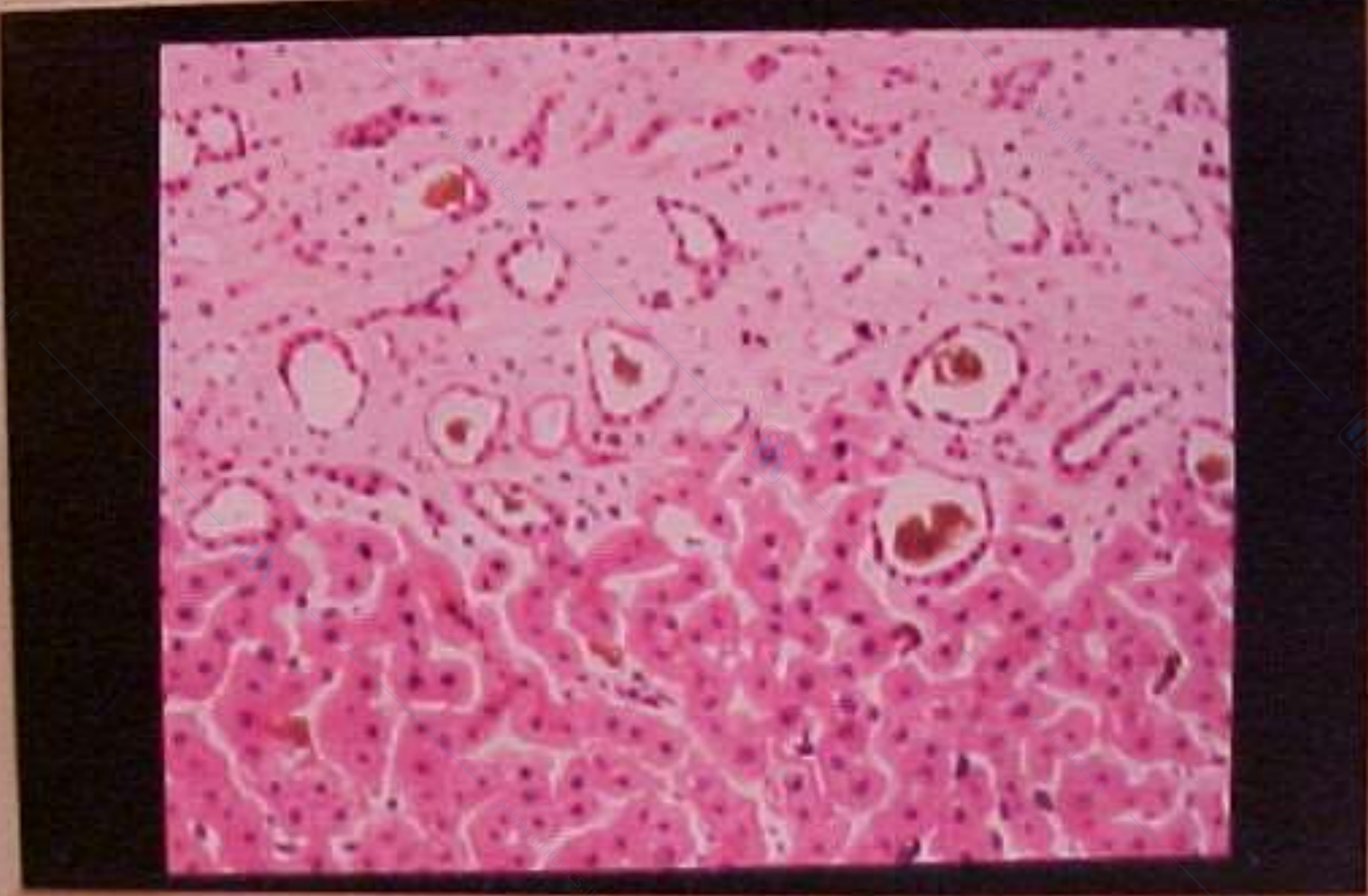
RISTABILIRE IL FLUSSO BILIARE



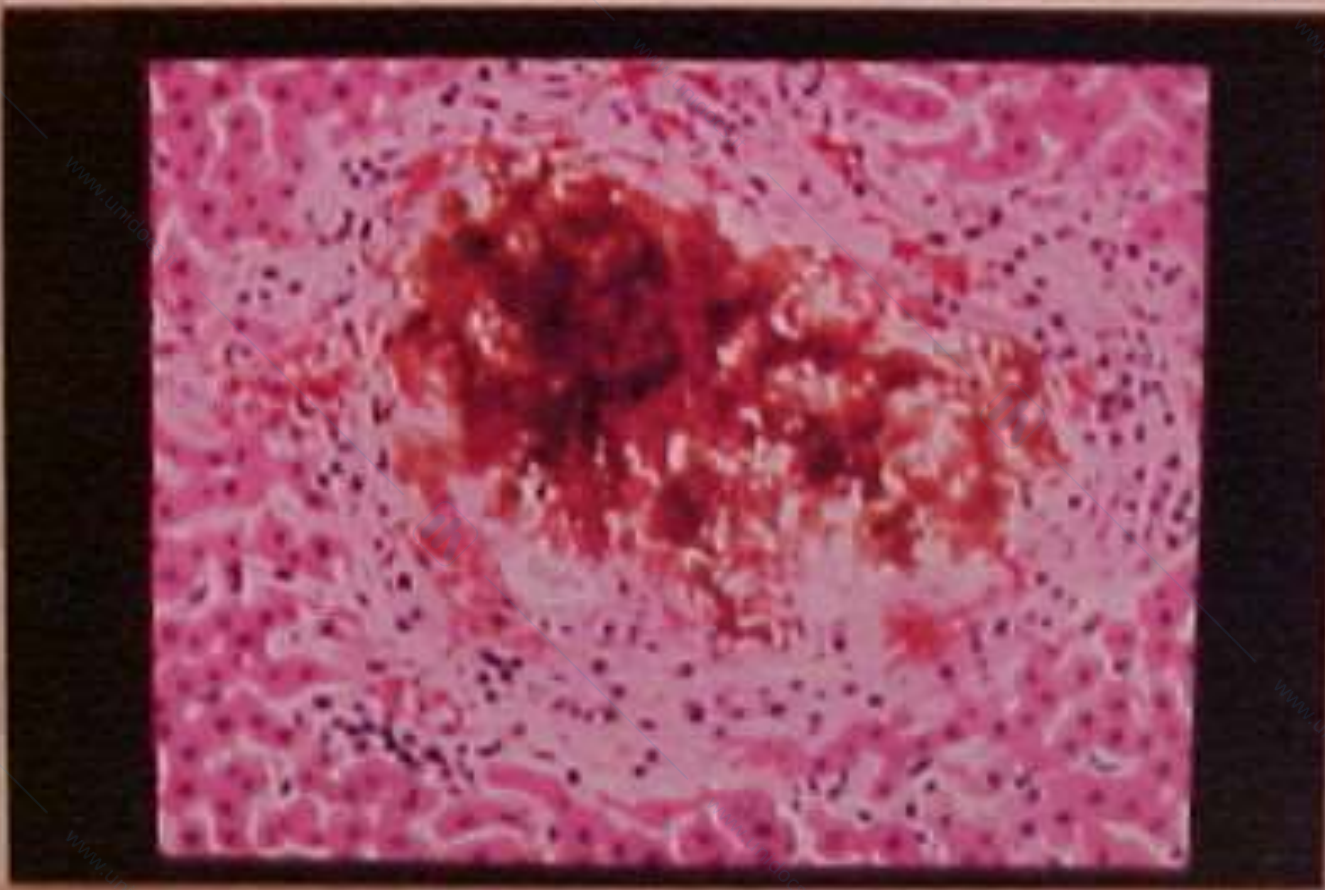
Tappi biliari centro
Lob. con degeneraz.
Epitrociti 1



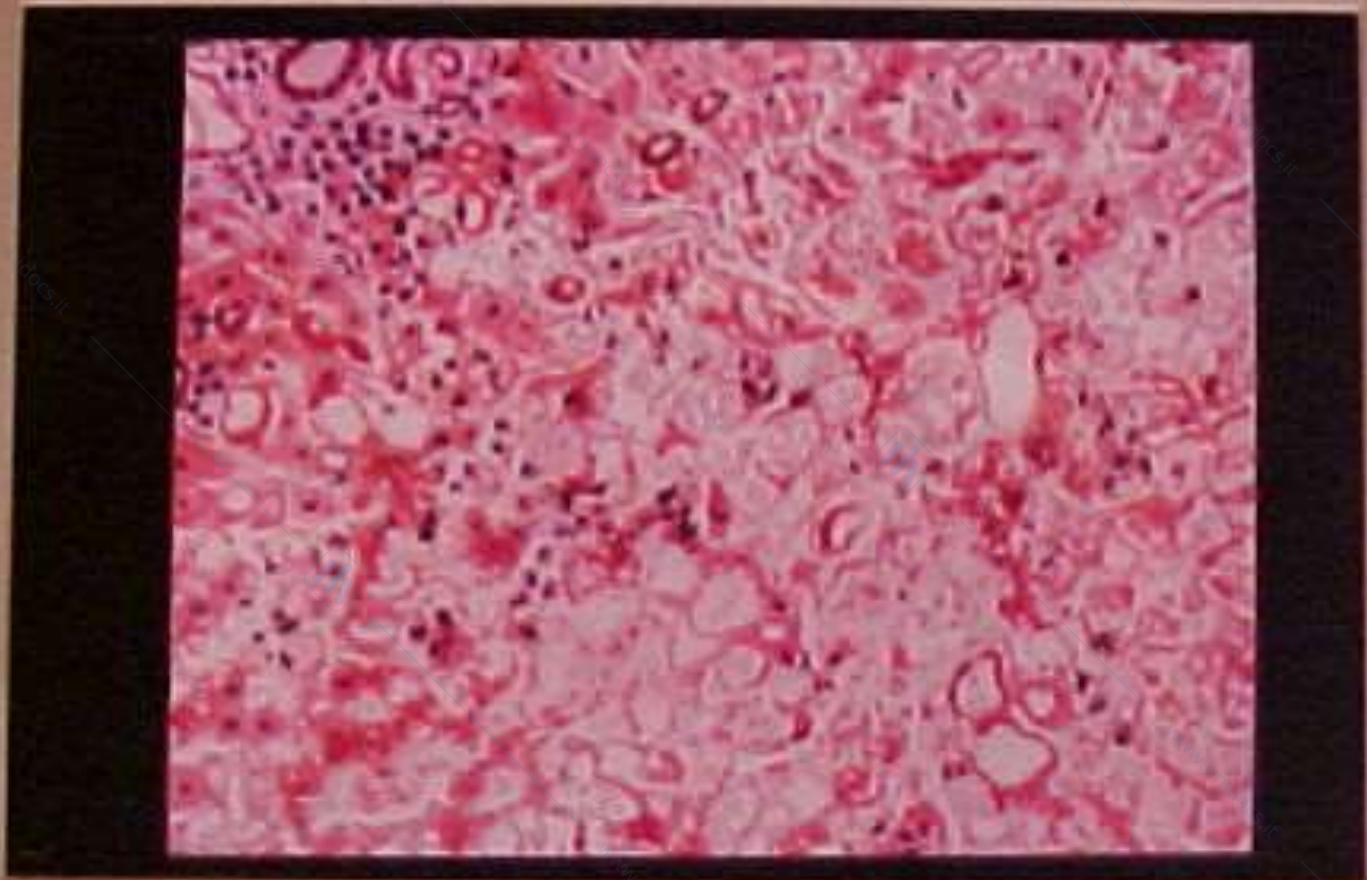
Fibrosi portale
2



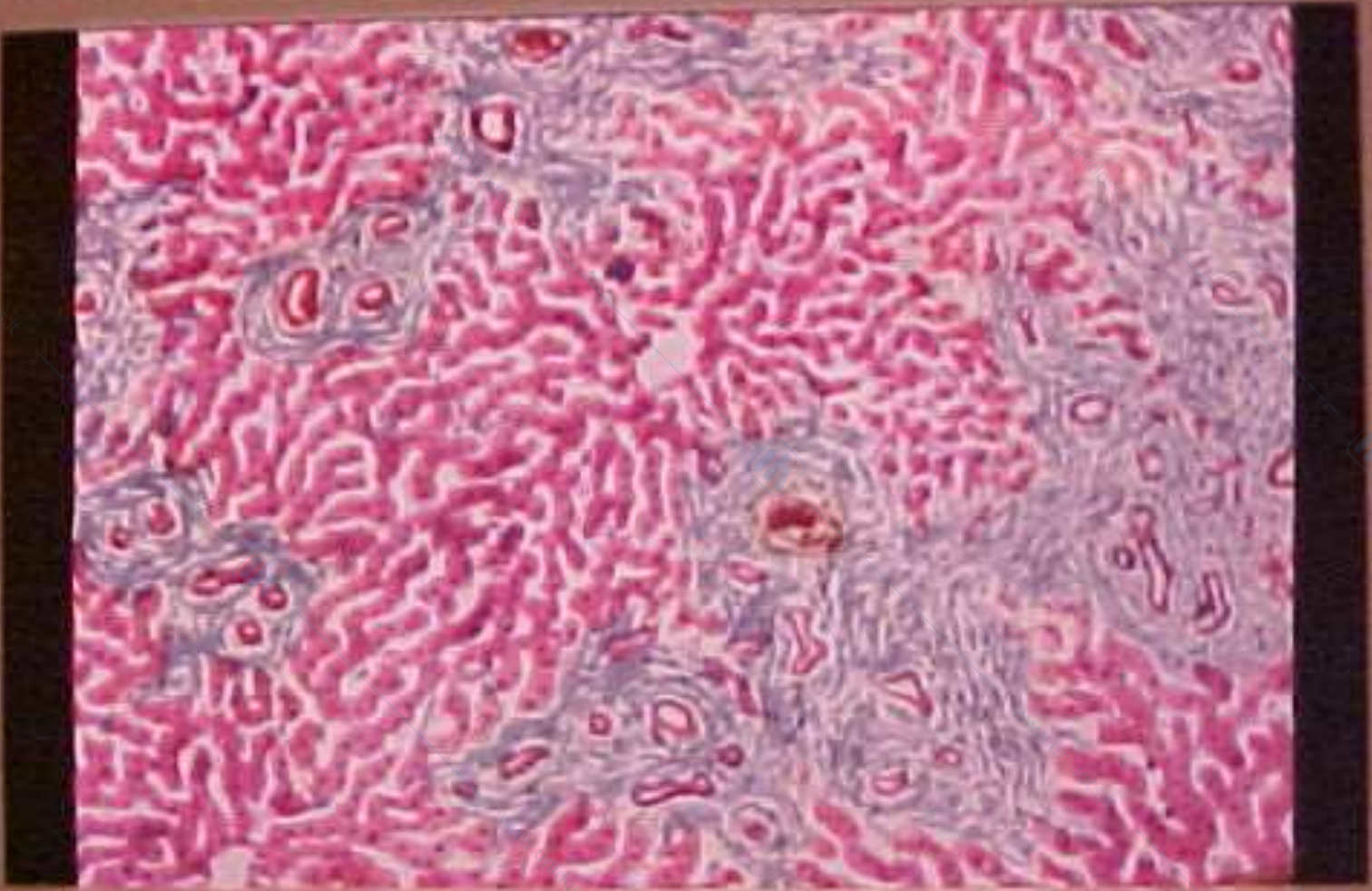
Microcisteoli nei
duttoli dilatati 2



strada vaso di Bile
4



Infarto bilobare



Cirrosi biliare

